

# SL

SERIES



## NFPA HYDRAULIC CYLINDER MEDIUM DUTY 1500PSI

Manufactured for various types of applications in automation. Built to last.

The **SL** series is manufactured to NFPA specifications. Comes with various mounting options, thread options and material options.

All steel construction or stainless steel

Bore sizes ranging from 1.5" up to 14", cushions available and prox switches are available.

All cylinders are factory tested before delivery

Special cylinders can be manufactured to any customer specifications. If volume permits SNS can provide a sample cylinder free of charge for customer to put in use.

Please contact factory for information regarding special design cylinders.



**SL SERIES TABLE OF CONTENTS. Pages: D1 to D19**

SL SERIES: CYLINDER CONSTRUCTION			PG. D-2
SL SERIES: HOW TO ORDER			PG. D-3
SL SERIES: FIG 3 SPECIAL OPTIONS			PG. D-4
<b>CODE:</b>	<b>MOUNT:</b>	<b>DESCRIPTION:</b>	
TD,TC,TB	MX1,2,3	Extended Tie Rods	PG. D-5/6
J	MF1	Front Flange	PG. D-5/6
H	MF2	Rear Flange	PG. D-5/6
BB	MP1	Rear Fixed Clevis	PG. D-7/8
BC	MP2	Rear Detachable Clevis	PG. D-7/8
BE	MP3	Cap Fixed Eye	PG. D-7/8
C	MS2	Side Lugs	PG. D-9/10
E	MS3	Center Lugs	PG. D-9/10
F	MS4	Side Tapped	PG. D-9/10
D	MT1	Front Trunnion	PG. D-11/12
DB	MT2	Rear Trunnion	PG. D-11/12
DD	MT4	Center Trunnion	PG. D-11/12
CB	MS1	Foot Mount	PG. D-13/14
G	MS7	Side End Lugs	PG. D-13/14
JB	MF5	Square Front Flange	PG. D-15/16
HB	MF6	Square Rear Flange	PG. D-15/16
SB		Spherical Bearing Mount (1.5" to 6")	PG. D-17
CLEVIS BRACKET			PG. D-18
EYE BRACKET			PG. D-18
PIN OPTIONS			PG. D-18
ROD CLEVIS OPTIONS			PG. D-19
ROD EYE OPTIONS			PG. D-19
ALIGNMENT COUPLERS			PG. D-19



MP1 MOUNT  
PG. D-7/8



MP2 MOUNT  
PG. D-7/8



MP3 MOUNT  
PG. D-7/8



MS1 MOUNT  
PG. D-13/14



MS2 MOUNT  
PG. D-9/10



MS4 MOUNT  
PG. D-9/10



MT2 MOUNT  
PG. D-11/12



MT4 MOUNT  
PG. D-11/12



MT1 MOUNT  
PG. D-11/12



MF6 MOUNT  
PG. D-15/16



MF5 MOUNT  
PG. D-15/16



MX1,2,3 MOUNT  
PG. D-5/6



MF2 MOUNT  
PG. D-5/6



MF2 MOUNT  
PG. D-5/6



MS7 MOUNT  
PG. D-13/14



MS3 MOUNT  
PG. D-9/10



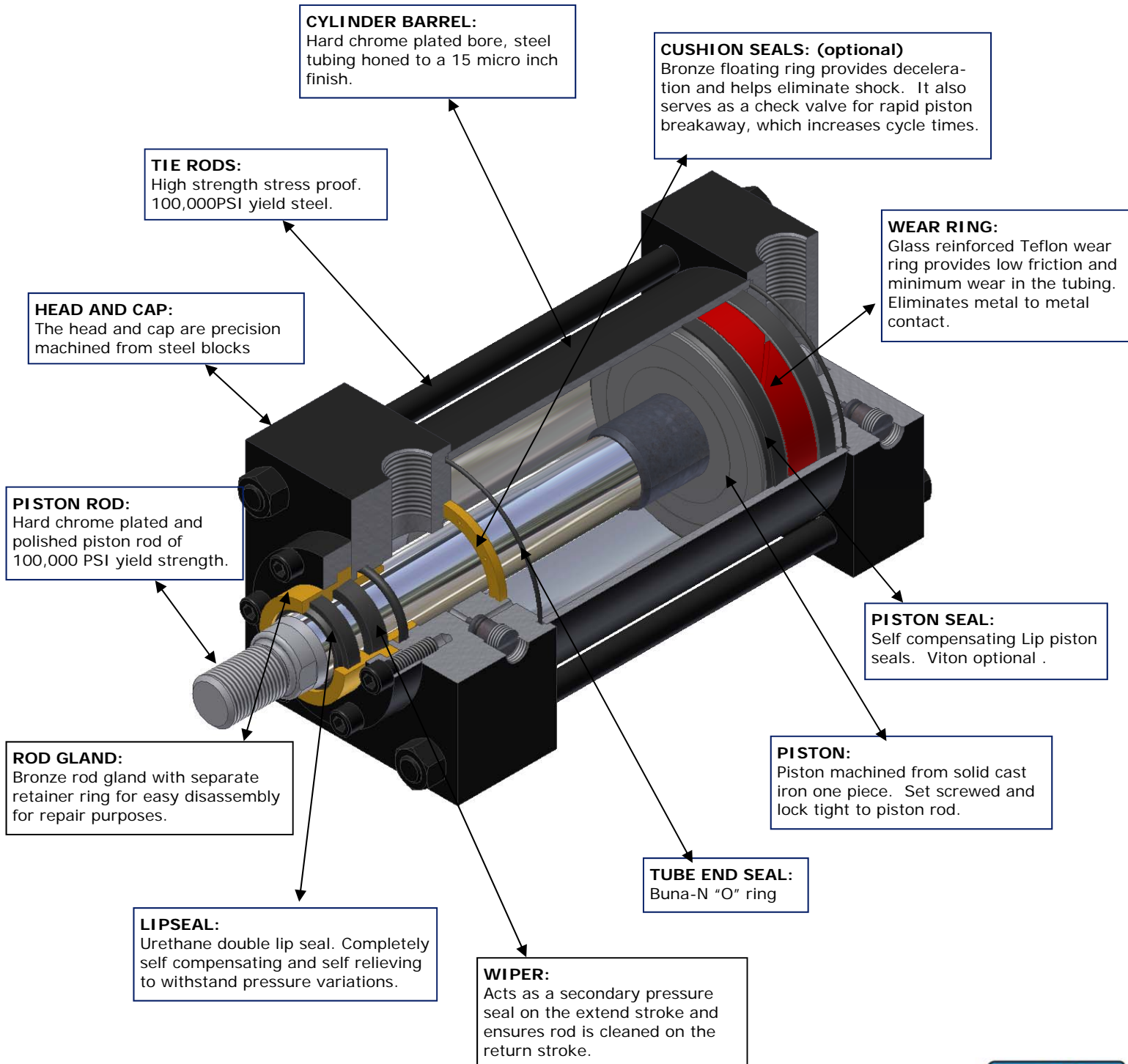
SB MOUNT  
PG. D-17





# SL SERIES CYLINDER

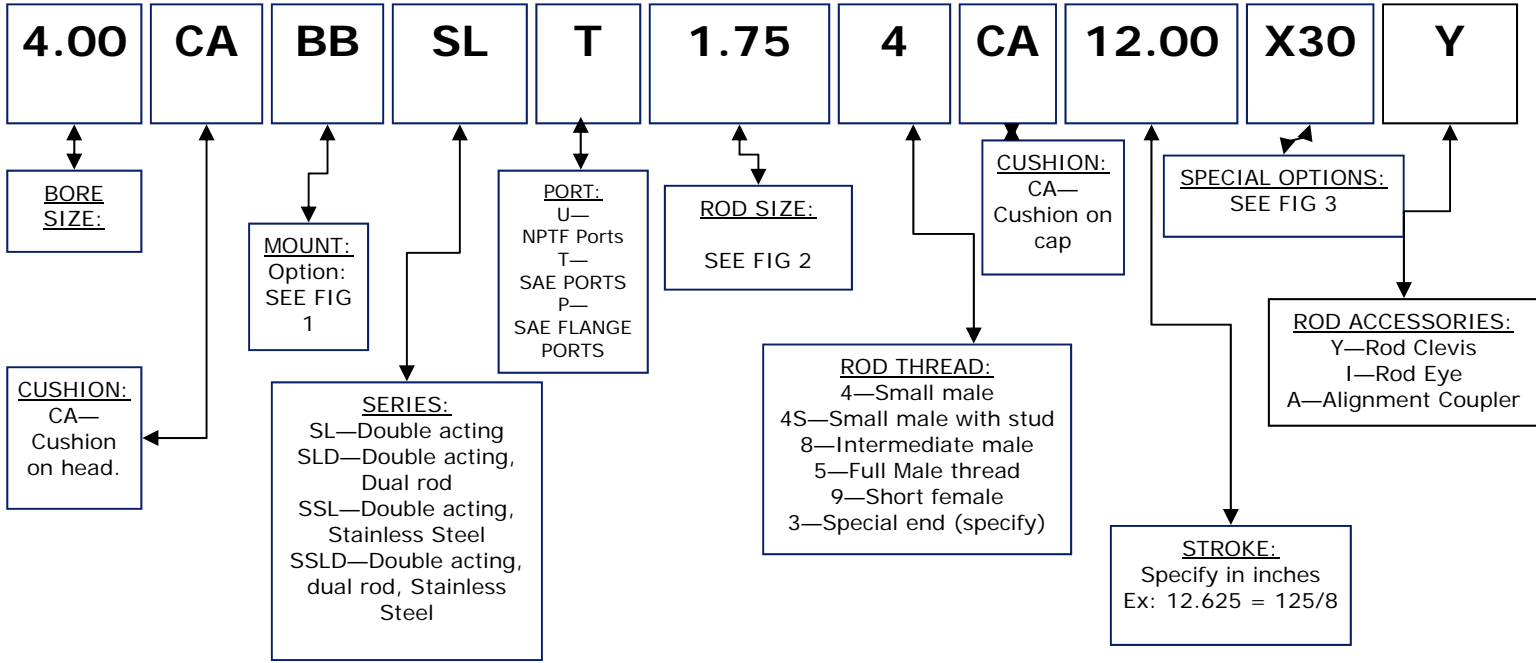
1500 PSI HYDRAULIC : 1.5" BORE UPTO 8" BORE  
NFPA INTERCHANGEABLE





# HOW TO ORDER: SL SERIES

MEDIUM DUTY HYDRAULIC CYLINDERS 1500PSI



**FIG 1**  
MOUNTING OPTIONS:

Mount	Code
MX1	TD
MX2	TC
MX3	TB
MS1	CB
MS2	C
MS4	F
MS7	G
MP1	BB
MP2	BC
MP4	BD
MT1	D
MT2	DB
MT4	DD
MF1	J
MF2	H
MF5	JB
ME3	JB (8)
MF6	HB
ME4	HB(8)
Spherical bearing SB	

**FIG 2**  
ROD SIZES:

Bore	Available rod option
1.50	0.625 (STD)
	1.00 (O/S)
	1.375 (O/S)
2.00	0.625 (STD)
	1.00 (O/S)
	1.375 (O/S)
2.50	0.625 (STD)
	1.00 (O/S)
	1.375 (O/S)
3.25	1.00 (STD)
	1.375 (O/S)
	1.75 (O/S)
4.00	2.00 (O/S)
	1.00 (STD)
	1.375 (O/S)
5.00	1.375 (O/S)
	1.75 (O/S)
	2.00 (O/S)
6.00	2.50 (O/S)
	3.00 (O/S)
	3.50 (O/S)
6.00	1.375 (STD)
	1.75 (O/S)
	2.00 (O/S)
6.00	2.50 (O/S)
	3.00 (O/S)
	3.50 (O/S)
6.00	4.00 (O/S)

**FIG 2**  
ROD SIZES:

Bore	Available rod option
8.00	1.375 (STD)
	1.75 (O/S)
	2.00 (O/S)
8.00	2.50 (O/S)
	3.00 (O/S)
	3.50 (O/S)
8.00	4.00 (O/S)
	4.50 (O/S)
	5.00 (O/S)
8.00	5.50 (O/S)

**FIG 3** →





**FIG 3**

## **SPECIAL CYLINDER OPTIONS: X OPTIONS**

The following list is the complete set of cylinder options and extras. All options do not apply to all cylinders. Each option that applies to the series of cylinder will be designated with \*\* to show that it applies to that series. All other options without this designation do not apply to that cylinder and cannot be ordered with that series.

### **CYLINDER SERIES: SL**

#### **ROD EXTENSIONS and STOP TUBE:**

X43—Extension on rod thread (ex: X43-2.00) Specifies 2" thread extension\*\*  
X44—Extension on rod plain (ex: X44-2.00) Specifies 2" rod plain extension\*\*

X14—Stop Tube (ex: X14-6.00) Specifies 6" stop tube. When specifying stop tube\*\* length, add length of stop tube to NET stroke of cylinder. (ex: 5" net stroke + 2" stop Tube = 7" complete stroke on cylinder)

Ex cylinder model number: 1.50TSH1.00-4-7.00-X14-2.00. Net stroke is 5" and stop Tube is 2".

#### **SEAL/CUSHION OPTIONS:**

X1—Cast Iron rings (Piston)\*\*  
X2—Viton seals (for high temperature)\*\*  
X4—Low temperature seals (-65F)\*\*  
X30—Metallic Rod wiper\*\*  
X10—No Cushions  
X38—No Cushion on Cap only  
X39—No Cushion on Head only

#### **ACCESSORY OPTIONS:**

X5—Cylinder rod lock  
X8—Nylon Rod Boot\*\*  
X9—Neoprene Rod Boot\*\*  
X23—Lifting Eye attached to cylinder Cap\*\*

#### **ROD OPTIONS:**

X3—Stainless Steel Piston Rod\*\*  
X8—Nylon Rod Boot\*\*  
X9—Neoprene Rod Boot\*\*  
X11—Nitrated Piston Rod\*\*  
X31—17-4PH Piston Rod\*\*

#### **CYLINDER FUNCTION OPTIONS:**

X25—Spring Return  
X26—Spring Extend  
X40—High load Piston\*\*

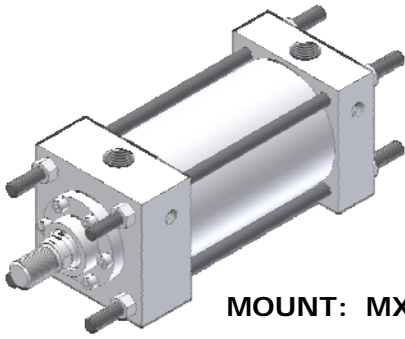
#### **PORT/CUSHION OPTIONS:**

X21—Bleeder port on Cap. Choose position. Ex: X21-P2 = Bleeder port on Pos 2\*\*  
X22—Bleeder port on Head. Choose position. Ex: X22-P3 = Bleeder port on Pos 3.\*\*  
X28—Undersize port on Cap. Specify port size. Ex: X28-SAE6\*\*  
X29—Undersize port on Head. Specify port size. Ex: X29-SAE6\*\*  
X33—Oversize port on Cap. Specify port size. Ex: X33-1"NPT\*\*  
X34—Oversize port on Head. Specify port size. Ex: X34-1"NPT\*\*  
X35—Cushion location change on Cap. Choose position. Ex: X35-P2 = Cushion on Pos 2.\*\*  
X36—Cushion location change on Head. Choose position. Ex: X36-P1 = Cushion on Pos 1.\*\*  
X41—Port location change on Cap. Choose position. Ex: X41-P3 = Port on Pos 3.\*\*  
X42—Port location change on Head. Choose position. Ex: X42-P4 = Port on Pos 4.\*\*

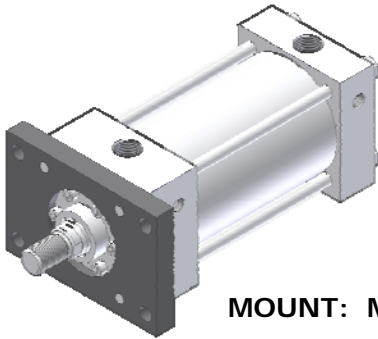
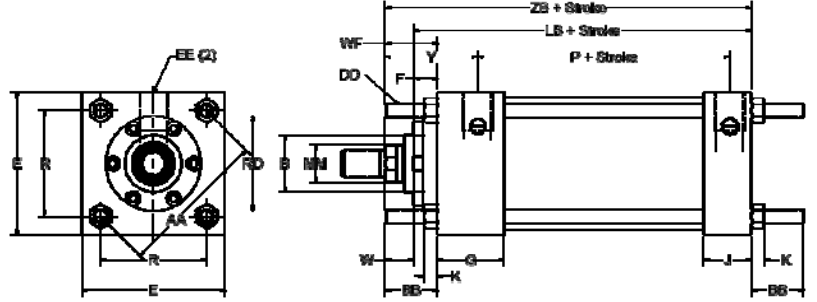




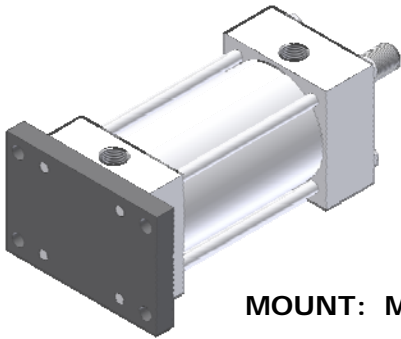
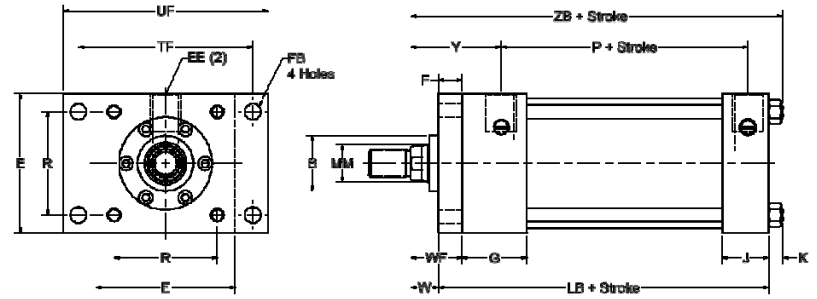
1.5" BORE TO 6" BORE



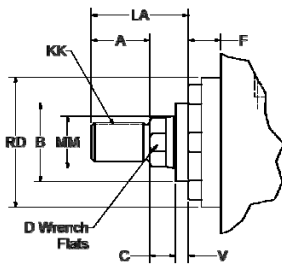
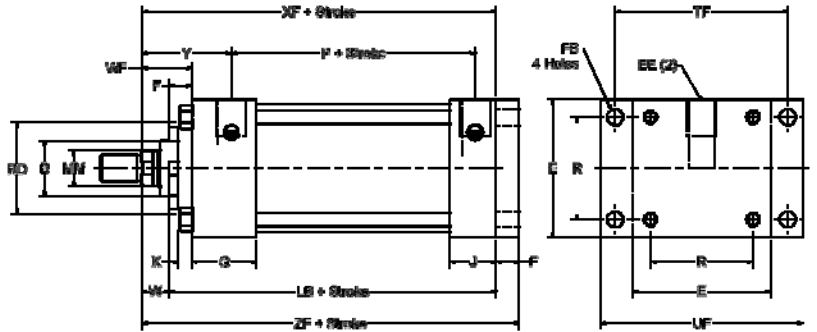
MOUNT: MX1,2,3



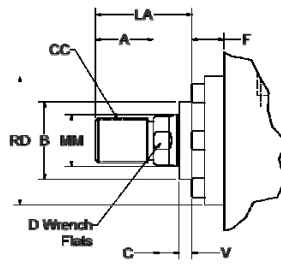
MOUNT: MF1



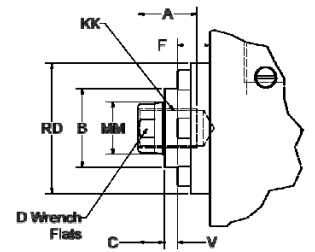
MOUNT: MF2



STYLE "4" SMALL MALE  
SEE TABLE 2



STYLE "8" INTERMEDIATE  
MALE  
SEE TABLE 2



STYLE "9" FEMALE THREAD  
SEE TABLE 2





TABLE 1—ENVELOPE AND MOUNTING DIMENSIONS

BORE	AA	BB	DD	E	EE	F	FB	G	J	K	R	TF	UF	LB*	P*
1.50	2.02	1	1/4-28	2	3/8	3/8	5/16	1 1/2	1	1/4	1.43	2 3/4	3 3/8	4	2 1/4
2.00	2.60	1 1/8	5/16-24	2 1/2	3/8	3/8	3/8	1 1/2	1	5/16	1.84	3 3/8	4 1/8	4	2 1/4
2.50	3.10	1 1/8	5/16-24	3	3/8	3/8	3/8	1 1/2	1	5/16	2.19	3 7/8	4 5/8	4 1/8	2 3/8
3.25	3.90	1 3/8	3/8-24	3 3/4	1/2	3/8	7/16	1 1/2	1 1/4	3/8	2.76	4 11/16	5 1/2	4 7/8	2 5/8
4.00	4.70	1 3/8	3/8-24	4 1/2	1/2	5/8	7/16	1 3/4	1 1/4	3/8	3.32	5 7/16	6 1/4	4 7/8	2 5/8
5.00	5.80	1 13/16	1/2-20	5 1/2	1/2	5/8	9/16	1 3/4	1 1/4	7/16	4.10	6 5/8	7 5/8	5 1/8	2 7/8
6.00	6.90	1 13/16	1/2-20	6 1/2	3/4	3/4	9/16	2	1 1/2	7/16	4.88	7 5/8	8 5/8	5 3/4	3 1/8

TABLE 2—ROD DIMENSIONS

ROD EXTENSIONS AND PILOT DIMENSIONS

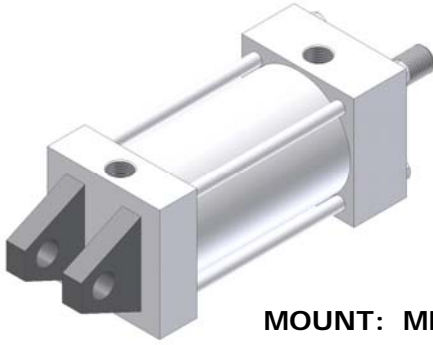
TABLE 3—ENVELOPE AND MOUNTING DIMENSIONS

BORE	MM	CC	KK	A	B	C	D	LA	NA	V	W	WF	RD	Y	XF*	ZB*	ZF*
1.50	5/8 (STD)	1/2-20	7/16-20	3/4	1.124	3/8	1/2	1 3/8	9/16	1/4	5/8	1	2 1/8	1 15/16	4 5/8	4 7/8	5
	1	7/8-14	3/4-16	1 1/8	1.499	1/2	7/8	2 1/8	15/16	1/2	1	1 3/8	2 1/2	2 5/16	5	5 1/4	5 3/8
2.00	5/8 (STD)	1/2-20	7/16-20	3/4	1.124	3/8	1/2	1 3/8	9/16	1/4	5/8	1	2 1/8	1 15/16	4 5/8	4 15/16	5
	1	7/8-14	3/4-16	1 1/8	1.499	1/2	7/8	2 1/8	15/16	1/2	1	1 3/8	2 1/2	2 5/16	5	5 5/16	5 3/8
	1 3/8	1 1/4-12	1-14	1 5/8	1.999	5/8	1 1/8	2 7/8	1 5/16	5/8	1 1/4	1 5/8	3	2 9/16	5 1/4	5 9/16	5 5/8
2.50	5/8 (STD)	1/2-20	7/16-20	3/4	1.124	3/8	1/2	1 3/8	9/16	1/4	5/8	1	2 1/8	1 15/16	4 3/4	5 1/16	5 1/8
	1	7/8-14	3/4-16	1 1/8	1.499	1/2	7/8	2 1/8	15/16	1/2	1	1 3/8	2 1/2	2 5/16	5 1/8	5 7/16	5 1/2
	1 3/8	1 1/4-12	1-14	1 5/8	1.999	5/8	1 1/8	2 7/8	1 5/16	5/8	1 1/4	1 5/8	3	2 9/16	5 3/8	5 11/16	5 3/4
	1 3/4	1 1/2-12	1 1/4-12	2	2.374	3/4	1 1/2	3 1/2	1 11/16	3/4	1 1/2	1 7/8	3 1/2	2 13/16	5 5/8	5 15/16	6
3.25	1 (STD)	7/8-14	3/4-16	1 1/8	1.499	1/2	7/8	2 1/8	15/16	1/4	3/4	1 3/8	2 1/2	2 7/16	5 5/8	6	6 1/4
	1 3/8	1 1/4-12	1-14	1 5/8	1.999	5/8	1 1/8	2 7/8	1 5/16	3/8	1	1 5/8	3	2 11/16	5 7/8	6 1/4	6 1/2
	1 3/4	1 1/2-12	1 1/4-12	2	2.374	3/4	1 1/2	3 1/2	1 11/16	1/2	1 1/4	1 7/8	3 1/2	2 15/16	6 1/8	6 1/2	6 3/4
	2	1 3/4-12	1 1/2-12	2 1/4	2.624	7/8	1 11/16	3 5/8	1 15/16	1/2	1 3/8	2	4	3 1/16	6 1/4	6 5/8	6 7/8
	2 1/2	2 1/4-12	1 7/8-12	3	3.124	1	2 1/16	4 1/2	2 3/8	5/8	1 5/8	2 1/4	4 1/2	3 5/16	6 1/2	6 7/8	7 1/8
5.00	1 (STD)	7/8-14	3/4-16	1 1/8	1.499	1/2	7/8	2 1/8	15/16	1/4	3/4	1 3/8	2 1/2	2 7/16	5 7/8	6 5/16	6 1/2
	1 3/8	1 1/4-12	1-14	1 5/8	1.999	5/8	1 1/8	2 7/8	1 5/16	3/8	1	1 5/8	3	2 11/16	6 1/8	6 9/16	6 3/4
	1 3/4	1 1/2-12	1 1/4-12	2	2.374	3/4	1 1/2	3 1/2	1 11/16	1/2	1 1/4	1 7/8	3 1/2	2 15/16	6 3/8	6 13/16	7
	2	1 3/4-12	1 1/2-12	2 1/4	2.624	7/8	1 11/16	3 5/8	1 15/16	1/2	1 3/8	2	4	3 1/16	6 1/2	6 15/16	7 1/8
	2 1/2	2 1/4-12	1 7/8-12	3	3.124	1	2 1/16	4 1/2	2 3/8	5/8	1 5/8	2 1/4	4 1/2	3 5/16	6 3/4	7 3/16	7 3/8
	3	2 3/4-12	2 1/4-12	3 1/2	3.749	1	2 5/8	5	2 7/8	5/8	1 5/8	2 1/4	5 1/4	3 5/16	6 3/4	7 3/16	7 3/8
6.00	3 1/2	3 1/4-12	2 1/2-12	3 1/2	4.249	1	3	5	3 3/8	5/8	1 5/8	2 1/4	5 3/4	3 7/16	6 3/4	7 3/16	7 3/8
	1 3/8 (STD)	1 1/4-12	1-14	1 5/8	1.999	5/8	1 1/8	2 7/8	1 5/16	1/4	7/8	1 5/8	3	2 13/16	6 5/8	7 1/16	7 3/8
	1 3/4	1 1/2-12	1 1/4-12	2	2.374	3/4	1 1/2	3 1/2	1 11/16	3/8	1 1/8	1 7/8	3 1/2	3 1/16	6 7/8	7 5/16	7 5/8
	2	1 3/4-12	1 1/2-12	2 1/4	2.624	7/8	1 11/16	3 5/8	1 15/16	3/8	1 1/4	2	4	3 3/16	7	7 7/16	7 3/4
	2 1/2	2 1/4-12	1 7/8-12	3	3.124	1	2 1/16	4 1/2	2 3/8	1/2	1 1/2	2 1/4	4 1/2	3 7/16	7 1/4	7 11/16	8
	3	2 3/4-12	2 1/4-12	3 1/2	3.749	1	2 5/8	5	2 7/8	1/2	1 1/2	2 1/4	5 1/4	3 7/16	7 1/4	7 11/16	8
	3 1/2	3 1/4-12	2 1/2-12	3 1/2	4.249	1	3	5	3 3/8	1/2	1 1/2	2 1/4	5 3/4	3 7/16	7 1/4	7 11/16	8
4	3 3/4-12	3-12	4	4.749	1	3 3/8	5 1/2	3 7/8	1/2	1 1/2	2 1/4	6 1/2	3 7/16	7 1/4	7 11/16	8	

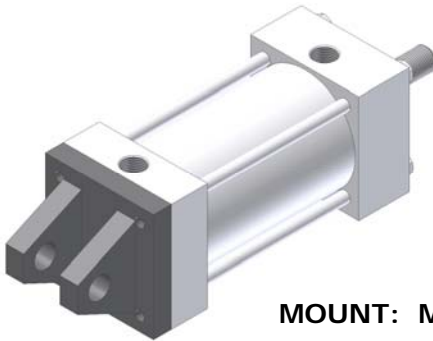
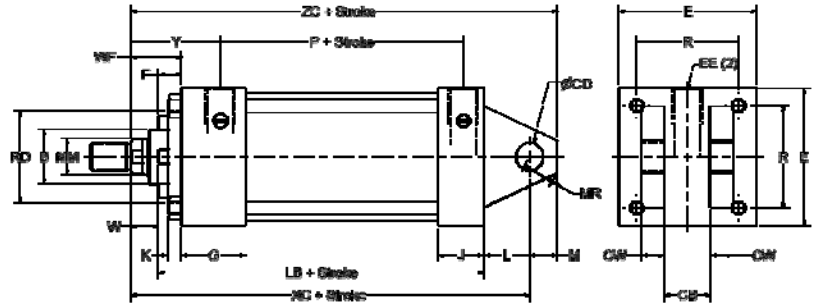




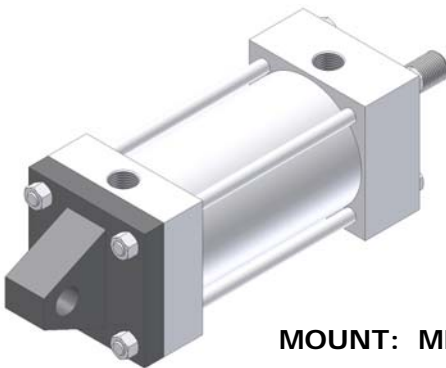
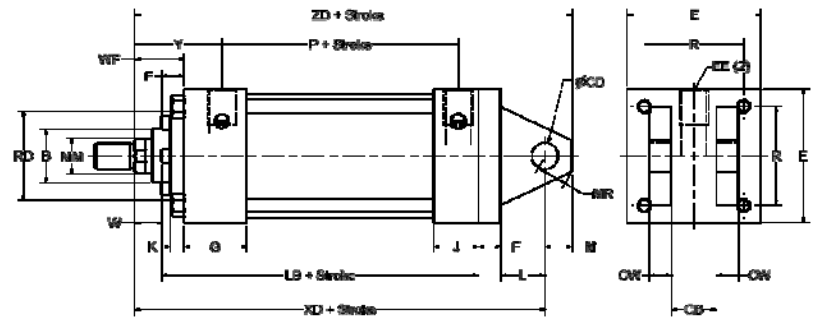
1.5" BORE TO 6" BORE



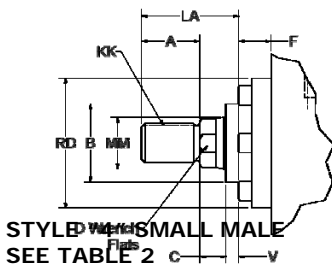
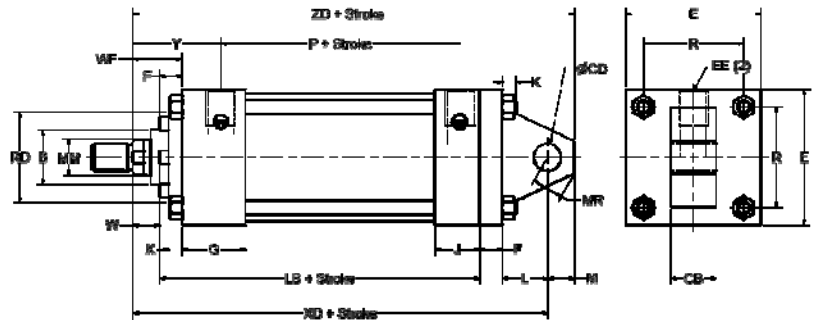
MOUNT: MP1



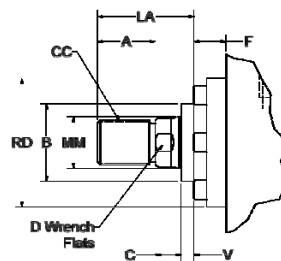
MOUNT: MP2



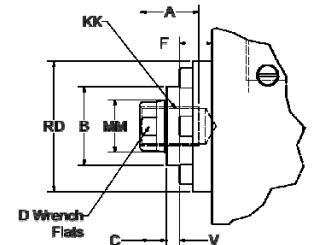
MOUNT: MP3



STYLE "5" SMALL MALE  
SEE TABLE 2



STYLE "8" INTERMEDIATE  
MALE  
SEE TABLE 2



STYLE "9" FEMALE THREAD  
SEE TABLE 2





TABLE 1—ENVELOPE AND MOUNTING DIMENSIONS

BORE	CB	CD	CW	E	EE	F	G	J	K	L	LR	M	MR	LB*	P*
1.50	3/4	1/2	1/2	2	3/8	3/8	1 1/2	1	1/4	3/4	3/4	1/2	5/8	4	2 1/4
2.00	3/4	1/2	1/2	2 1/2	3/8	3/8	1 1/2	1	5/16	3/4	3/4	1/2	5/8	4	2 1/4
2.50	3/4	1/2	1/2	3	3/8	3/8	1 1/2	1	5/16	3/4	3/4	1/2	5/8	4 1/8	2 3/8
3.25	1 1/4	3/4	5/8	3 3/4	1/2	3/8	1 1/2	1 1/4	3/8	1 1/4	1	3/4	1 5/16	4 7/8	2 5/8
4.00	1 1/4	3/4	5/8	4 1/2	1/2	5/8	1 3/4	1 1/4	3/8	1 1/4	1	3/4	1 5/16	4 7/8	2 5/8
5.00	1 1/4	3/4	5/8	5 1/2	1/2	5/8	1 3/4	1 1/4	7/16	1 1/4	1	3/4	1 5/16	5 1/8	2 7/8
6.00	1 1/2	1	1/2	6 1/2	3/4	3/4	2	1 1/2	7/16	1 1/2	1 1/4	1	1 3/16	5 3/4	3 1/8

TABLE 2—ROD DIMENSIONS

ROD EXTENSIONS AND PILOT DIMENSIONS

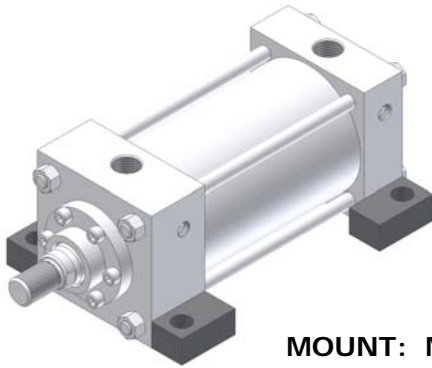
TABLE 3—ENVELOPE AND MOUNTING DIMENSIONS

BORE	MM	CC	KK	A	B	C	D	LA	NA	V	W	RD	Y	XC*	XD*	ZC*	ZD*
1.50	5/8 (STD)	1/2-20	7/16-20	3/4	1.124	3/8	1/2	1 3/8	9/16	1/4	5/8	2 1/8	1 15/16	5 3/8	5 3/4	5 7/8	6 1/4
	1	7/8-14	3/4-16	1 1/8	1.499	1/2	7/8	2 1/8	15/16	1/2	1	2 1/2	2 5/16	5 3/4	6 1/8	6 1/4	6 5/8
	1 3/8	1 1/4-12	1-14	1 5/8	1.999	5/8	1 1/8	2 7/8	1 5/16	5/8	1 1/4	3	2 9/16	6	6 3/8	6 1/2	6 7/8
2.00	5/8 (STD)	1/2-20	7/16-20	3/4	1.124	3/8	1/2	1 3/8	9/16	1/4	5/8	2 1/8	1 15/16	5 3/8	5 3/4	5 7/8	6 1/4
	1	7/8-14	3/4-16	1 1/8	1.499	1/2	7/8	2 1/8	15/16	1/2	1	2 1/2	2 5/16	5 3/4	6 1/8	6 1/4	6 5/8
	1 3/8	1 1/4-12	1-14	1 5/8	1.999	5/8	1 1/8	2 7/8	1 5/16	5/8	1 1/4	3	2 9/16	6	6 3/8	6 1/2	6 7/8
	1 3/4	1 1/2-12	1 1/4-12	2	2.374	3/4	1 1/2	3 1/2	1 11/16	3/4	1 1/2	3 1/2	2 13/16	6 3/8	6 3/4	6 7/8	7 1/4
2.50	5/8 (STD)	1/2-20	7/16-20	3/4	1.124	3/8	1/2	1 3/8	9/16	1/4	5/8	2 1/8	1 15/16	5 1/2	5 7/8	6	6 3/8
	1	7/8-14	3/4-16	1 1/8	1.499	1/2	7/8	2 1/8	15/16	1/2	1	2 1/2	2 5/16	5 7/8	6 1/4	6 3/8	6 3/4
	1 3/8	1 1/4-12	1-14	1 5/8	1.999	5/8	1 1/8	2 7/8	1 5/16	5/8	1 1/4	3	2 9/16	6 1/8	6 1/2	6 5/8	7
	1 3/4	1 1/2-12	1 1/4-12	2	2.374	3/4	1 1/2	3 1/2	1 11/16	3/4	1 1/2	3 1/2	2 13/16	6 3/8	6 3/4	6 7/8	7 1/4
3.25	1 (STD)	7/8-14	3/4-16	1 1/8	1.499	1/2	7/8	2 1/8	15/16	1/4	3/4	2 1/2	2 7/16	6 7/8	7 1/2	7 5/8	8 1/4
	1 3/8	1 1/4-12	1-14	1 5/8	1.999	5/8	1 1/8	2 7/8	1 5/16	3/8	1	3	2 11/16	7 1/8	7 3/4	7 7/8	8 1/2
	1 3/4	1 1/2-12	1 1/4-12	2	2.374	3/4	1 1/2	3 1/2	1 11/16	1/2	1 1/4	3 1/2	2 15/16	7 3/8	8	8 1/8	8 3/4
	2	1 3/4-12	1 1/2-12	2 1/4	2.624	7/8	1 11/16	3 5/8	1 15/16	1/2	1 3/8	4	3 1/16	7 1/2	8 1/8	8 1/4	8 7/8
4.00	1 (STD)	7/8-14	3/4-16	1 1/8	1.499	1/2	7/8	2 1/8	15/16	1/4	3/4	2 1/2	2 7/16	6 7/8	7 1/2	7 5/8	8 1/4
	1 3/8	1 1/4-12	1-14	1 5/8	1.999	5/8	1 1/8	2 7/8	1 5/16	3/8	1	3	2 11/16	7 1/8	7 3/4	7 7/8	8 1/2
	1 3/4	1 1/2-12	1 1/4-12	2	2.374	3/4	1 1/2	3 1/2	1 11/16	1/2	1 1/4	3 1/2	2 15/16	7 3/8	8	8	8 3/4
	2	1 3/4-12	1 1/2-12	2 1/4	2.624	7/8	1 11/16	3 5/8	1 15/16	1/2	1 3/8	4	3 1/16	7 1/2	8 1/8	8 1/8	8 7/8
	2 1/2	2 1/4-12	1 7/8-12	3	3.124	1	2 1/16	4 1/2	2 3/8	5/8	1 5/8	4 1/2	3 5/16	7 3/4	8 3/8	8 3/8	9 1/8
5.00	1 (STD)	7/8-14	3/4-16	1 1/8	1.499	1/2	7/8	2 1/8	15/16	1/4	3/4	2 1/2	2 7/16	7 1/8	7 3/4	7 7/8	8 1/2
	1 3/8	1 1/4-12	1-14	1 5/8	1.999	5/8	1 1/8	2 7/8	1 5/16	3/8	1	3	2 11/16	7 3/8	8	8 1/8	8 3/4
	1 3/4	1 1/2-12	1 1/4-12	2	2.374	3/4	1 1/2	3 1/2	1 11/16	1/2	1 1/4	3 1/2	2 15/16	7 5/8	8 1/4	8 3/8	9
	2	1 3/4-12	1 1/2-12	2 1/4	2.624	7/8	1 11/16	3 5/8	1 15/16	1/2	1 3/8	4	3 1/16	7 3/4	8 3/8	8 1/2	9 1/8
	2 1/2	2 1/4-12	1 7/8-12	3	3.124	1	2 1/16	4 1/2	2 3/8	5/8	1 5/8	4 1/2	3 5/16	8	8 5/8	8 3/4	9 3/8
6.00	1 3/8 (STD)	1 1/4-12	1-14	1 5/8	1.999	5/8	1 1/8	2 7/8	1 5/16	1/4	7/8	3	2 13/16	8 1/8	8 7/8	9 1/8	9 7/8
	1 3/4	1 1/2-12	1 1/4-12	2	2.374	3/4	1 1/2	3 1/2	1 11/16	3/8	1 1/8	3 1/2	3 1/16	8 3/8	9 1/8	9 3/8	10 1/8
	2	1 3/4-12	1 1/2-12	2 1/4	2.624	7/8	1 11/16	3 5/8	1 15/16	3/8	1 1/4	4	3 3/16	8 1/2	9 1/4	9 1/2	10 1/4
	2 1/2	2 1/4-12	1 7/8-12	3	3.124	1	2 1/16	4 1/2	2 3/8	1/2	1 1/2	4 1/2	3 7/16	8 3/4	9 1/2	9 3/4	10 1/2
	3	2 3/4-12	2 1/4-12	3 1/2	3.749	1	2 5/8	5	2 7/8	1/2	1 1/2	5 1/4	3 7/16	8 3/4	9 1/2	9 3/4	10 1/2

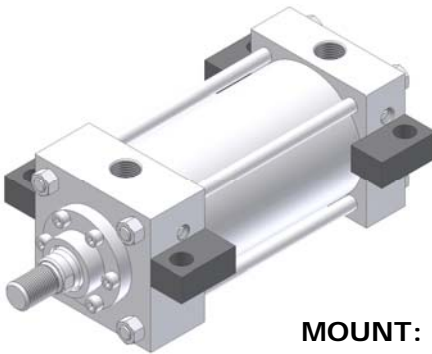
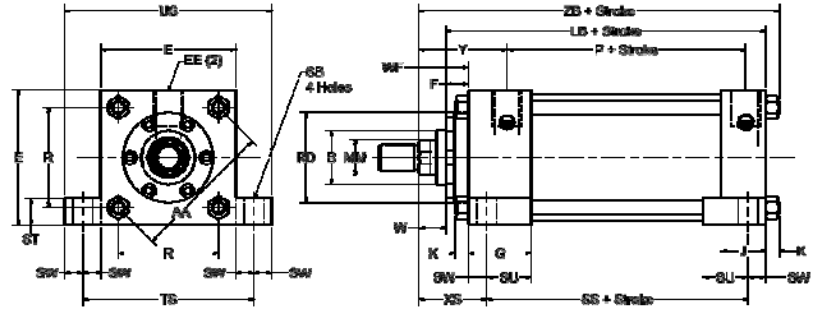




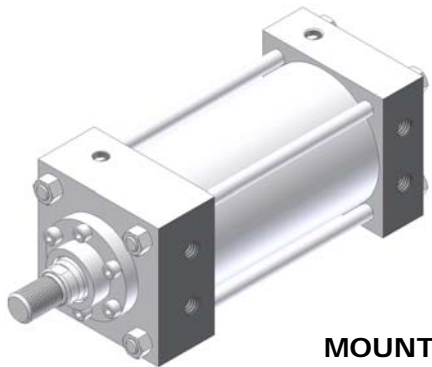
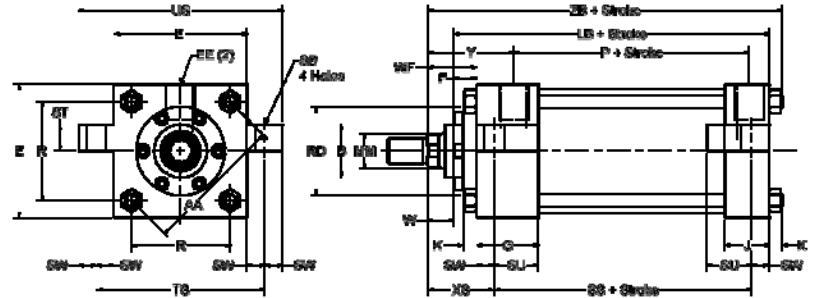
1.5" BORE TO 6" BORE



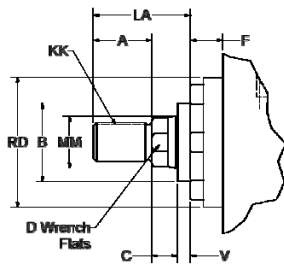
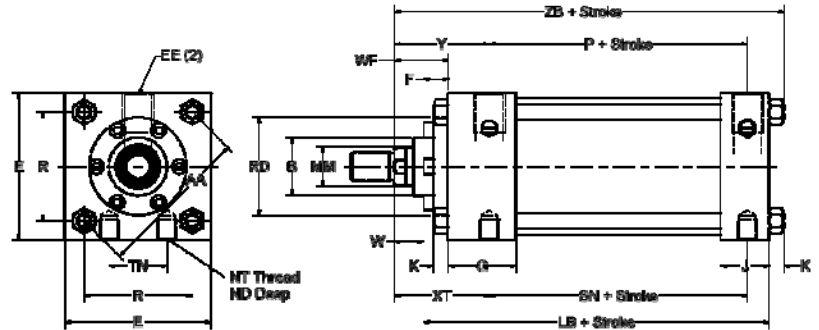
MOUNT: MS2



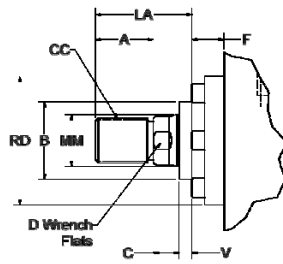
MOUNT: MS3



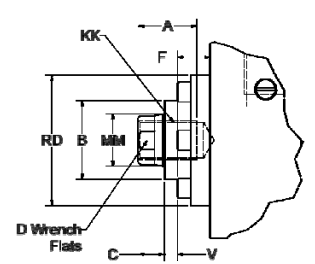
MOUNT: MS4



STYLE "4" SMALL MALE  
SEE TABLE 2



STYLE "8" INTERMEDIATE  
MALE  
SEE TABLE 2



STYLE "9" FEMALE THREAD  
SEE TABLE 2





TABLE 1—ENVELOPE AND MOUNTING DIMENSIONS

BORE	E	EE	F	G	J	K	NT	SB	ST	SU	SW	TN	TS	US	LB*	P*	SN	SS
1.50	2	3/8	3/8	1 1/2	1	1/4	1/4-20	7/16	1/2	1 5/16	3/8	5/8	2 3/4	3 1/2	4	2 1/4	2 1/4	2 7/8
2.00	2 1/2	3/8	3/8	1 1/2	1	5/16	5/16-18	7/16	1/2	1 5/16	3/8	7/8	3 1/4	4	4	2 1/4	2 1/4	2 7/8
2.50	3	3/8	3/8	1 1/2	1	5/16	3/8-16	7/16	1/2	1 5/16	3/8	1 1/4	3 3/4	4 1/2	4 1/8	2 3/8	2 3/8	3
3.25	3 3/4	1/2	3/8	1 1/2	1 1/4	3/8	1/2-13	9/16	3/4	1 1/4	1/2	1 1/2	4 3/4	5 3/4	4 7/8	2 5/8	2 5/8	3 1/4
4.00	4 1/2	1/2	5/8	1 3/4	1 1/4	3/8	1/2-13	9/16	3/4	1 1/4	1/2	2 1/16	5 1/2	6 1/2	4 7/8	2 5/8	2 5/8	3 1/4
5.00	5 1/2	1/2	5/8	1 3/4	1 1/4	7/16	5/8-11	13/16	1	1 9/16	1 1/16	2 11/16	6 7/8	8 1/4	5 1/8	2 7/8	2 7/8	3 1/8
6.00	6 1/2	3/4	3/4	2	1 1/2	7/16	3/4-10	13/16	1	1 9/16	1 1/16	3 1/4	7 7/8	9 1/4	5 3/4	3 1/8	3 1/8	3 5/8

TABLE 2—ROD DIMENSIONS

ROD EXTENSIONS AND PILOT DIMENSIONS

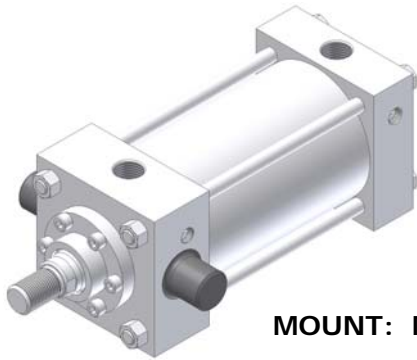
TABLE 3—ENVELOPE AND MOUNTING DIMENSIONS

BORE	MM	CC	KK	ROD EXTENSIONS AND PILOT DIMENSIONS								ND	XS	XY	RD	Y	ZB*
				A	B +.000 -.002	C	D	LA	NA	V	W						
1.50	5/8 (STD)	1/2-20	7/16-20	3/4	1.124	3/8	1/2	1 3/8	9/16	1/4	5/8	3/8	1 3/8	1 15/16	2 1/8	1 15/16	4 7/8
	1	7/8-14	3/4-16	1 1/8	1.499	1/2	7/8	2 1/8	15/16	1/2	1	3/8	1 3/4	2 5/16	2 1/2	2 5/16	5 1/4
2.00	5/8 (STD)	1/2-20	7/16-20	3/4	1.124	3/8	1/2	1 3/8	9/16	1/4	5/8	11/32	1 3/8	1 15/16	2 1/8	1 15/16	4 15/16
	1	7/8-14	3/4-16	1 1/8	1.499	1/2	7/8	2 1/8	15/16	1/2	1	11/32	1 3/4	2 5/16	2 1/2	2 5/16	5 5/16
	1 3/8	1 1/4-12	1-14	1 5/8	1.999	5/8	1 1/8	2 7/8	1 5/16	5/8	1 1/4	11/32	2	2 9/16	3	2 9/16	5 9/16
2.50	5/8 (STD)	1/2-20	7/16-20	3/4	1.124	3/8	1/2	1 3/8	9/16	1/4	5/8	7/16	1 3/8	1 15/16	2 1/8	1 15/16	5 1/16
	1	7/8-14	3/4-16	1 1/8	1.499	1/2	7/8	2 1/8	15/16	1/2	1	7/16	1 3/4	2 5/16	2 1/2	2 5/16	5 7/16
	1 3/8	1 1/4-12	1-14	1 5/8	1.999	5/8	1 1/8	2 7/8	1 5/16	5/8	1 1/4	7/16	2	2 9/16	3	2 9/16	5 11/16
	1 3/4	1 1/2-12	1 1/4-12	2	2.374	3/4	1 1/2	3 1/2	1 11/16	3/4	1 1/2	7/16	2 1/4	2 13/16	3 1/2	2 13/16	5 15/16
3.25	1 (STD)	7/8-14	3/4-16	1 1/8	1.499	1/2	7/8	2 1/8	15/16	1/4	3/4	1/2	1 7/8	2 7/16	2 1/2	2 7/16	6
	1 3/8	1 1/4-12	1-14	1 5/8	1.999	5/8	1 1/8	2 7/8	1 5/16	3/8	1	1/2	2 1/8	2 11/16	3	2 11/16	6 1/4
	1 3/4	1 1/2-12	1 1/4-12	2	2.374	3/4	1 1/2	3 1/2	1 11/16	1/2	1 1/4	1/2	2 3/8	2 15/16	3 1/2	2 15/16	6 1/2
	2	1 3/4-12	1 1/2-12	2 1/4	2.624	7/8	1 11/16	3 5/8	1 15/16	1/2	1 3/8	1/2	2 1/2	3 1/16	4	3 1/16	6 5/8
4.00	1 (STD)	7/8-14	3/4-16	1 1/8	1.499	1/2	7/8	2 1/8	15/16	1/4	3/4	5/8	1 7/8	2 7/16	2 1/2	2 7/16	6
	1 3/8	1 1/4-12	1-14	1 5/8	1.999	5/8	1 1/8	2 7/8	1 5/16	3/8	1	5/8	2 1/8	2 11/16	3	2 11/16	6 1/4
	1 3/4	1 1/2-12	1 1/4-12	2	2.374	3/4	1 1/2	3 1/2	1 11/16	1/2	1 1/4	5/8	2 3/8	2 15/16	3 1/2	2 15/16	6 1/2
	2	1 3/4-12	1 1/2-12	2 1/4	2.624	7/8	1 11/16	3 5/8	1 15/16	1/2	1 3/8	5/8	2 1/2	3 1/16	4	3 1/16	6 5/8
	2 1/2	2 1/4-12	1 7/8-12	3	3.124	1	2 1/16	4 1/2	2 3/8	5/8	1 5/8	5/8	2 3/4	3 5/16	4 1/2	3 5/16	6 7/8
	3	2 3/4-12	2 1/4-12	3 1/2	3.749	1	2 5/8	5	2 7/8	5/8	1 5/8	3/4	2 1/16	2 7/16	2 1/2	2 7/16	6 5/16
5.00	1 (STD)	7/8-14	3/4-16	1 1/8	1.499	1/2	7/8	2 1/8	15/16	1/4	3/4	3/4	2 1/16	2 7/16	2 1/2	2 7/16	6 5/16
	1 3/8	1 1/4-12	1-14	1 5/8	1.999	5/8	1 1/8	2 7/8	1 5/16	3/8	1	3/4	2 5/16	2 11/16	3	2 11/16	6 9/16
	1 3/4	1 1/2-12	1 1/4-12	2	2.374	3/4	1 1/2	3 1/2	1 11/16	1/2	1 1/4	3/4	2 9/16	2 15/16	3 1/2	2 15/16	6 13/16
	2	1 3/4-12	1 1/2-12	2 1/4	2.624	7/8	1 11/16	3 5/8	1 15/16	1/2	1 3/8	3/4	2 11/16	3 1/16	4	3 1/16	6 15/16
	2 1/2	2 1/4-12	1 7/8-12	3	3.124	1	2 1/16	4 1/2	2 3/8	5/8	1 5/8	3/4	2 15/16	3 5/16	4 1/2	3 5/16	7 3/16
	3	2 3/4-12	2 1/4-12	3 1/2	3.749	1	2 5/8	5	2 7/8	5/8	1 5/8	3/4	2 15/16	3 5/16	5 1/4	3 5/16	7 3/16
	3 1/2	3 1/4-12	2 1/2-12	3 1/2	4.249	1	3	5	3 3/8	5/8	1 5/8	3/4	2 15/16	3 5/16	5 3/4	3 7/16	7 3/16
6.00	1 3/8 (STD)	1 1/4-12	1-14	1 5/8	1.999	5/8	1 1/8	2 7/8	1 5/16	1/4	7/8	7/8	2 5/16	2 13/16	3	2 13/16	7 1/16
	1 3/4	1 1/2-12	1 1/4-12	2	2.374	3/4	1 1/2	3 1/2	1 11/16	3/8	1 1/8	7/8	2 9/16	3 1/16	3 1/2	3 1/16	7 5/16
	2	1 3/4-12	1 1/2-12	2 1/4	2.624	7/8	1 11/16	3 5/8	1 15/16	3/8	1 1/4	7/8	2 11/16	3 3/16	4	3 3/16	7 7/16
	2 1/2	2 1/4-12	1 7/8-12	3	3.124	1	2 1/16	4 1/2	2 3/8	1/2	1 1/2	7/8	2 15/16	3 7/16	4 1/2	3 7/16	7 11/16
	3	2 3/4-12	2 1/4-12	3 1/2	3.749	1	2 5/8	5	2 7/8	1/2	1 1/2	7/8	2 15/16	3 7/16	5 1/4	3 7/16	7 11/16
	3 1/2	3 1/4-12	2 1/2-12	3 1/2	4.249	1	3	5	3 3/8	1/2	1 1/2	7/8	2 15/16	3 7/16	5 3/4	3 7/16	7 11/16
4	3 3/4-12	3-12	4	4.749	1	3 3/8	5 1/2	3 7/8	1/2	1 1/2	7/8	2 15/16	3 7/16	6 1/2	3 7/16	7 11/16	

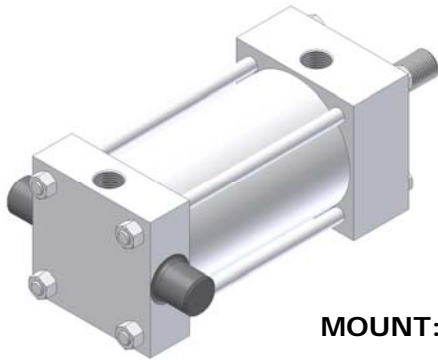
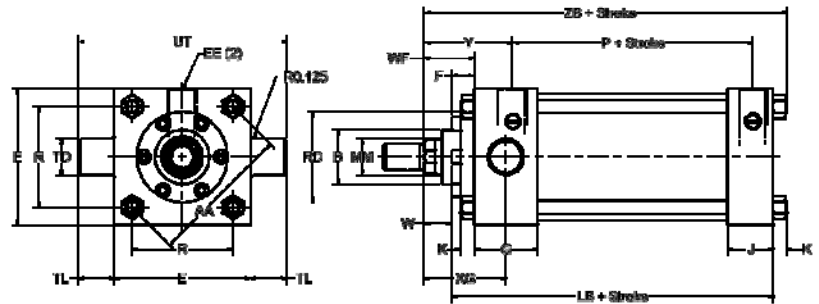




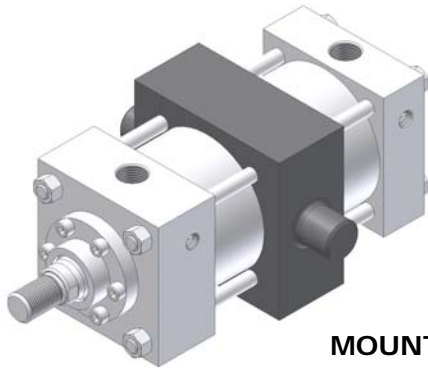
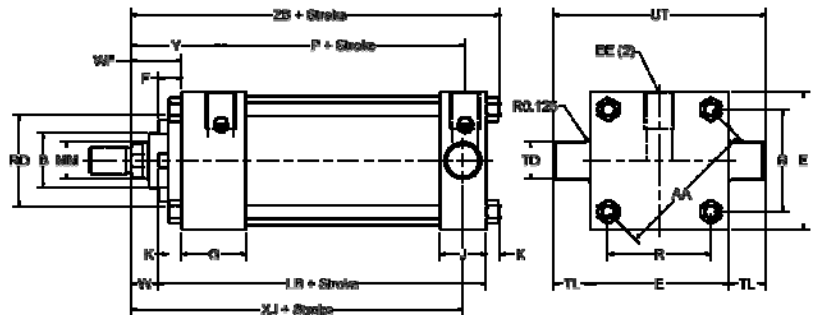
1.5" BORE TO 6" BORE



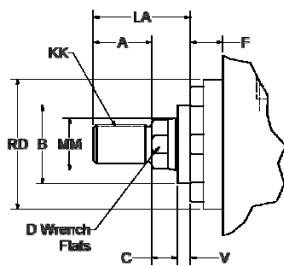
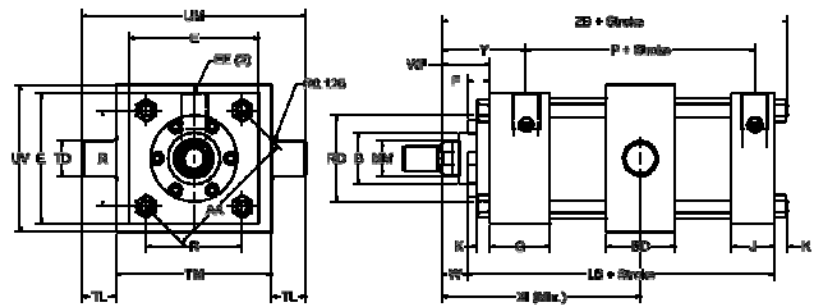
MOUNT: MT1



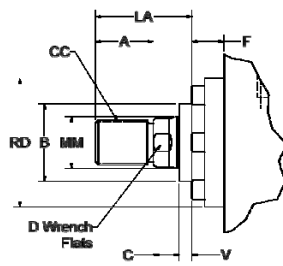
MOUNT: MT2



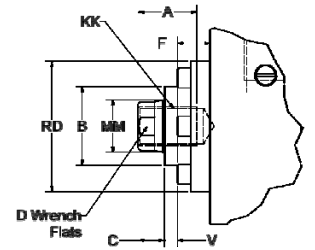
MOUNT: MT4



STYLE "4" SMALL MALE  
SEE TABLE 2



STYLE "8" INTERMEDIATE  
MALE  
SEE TABLE 2



STYLE "9" FEMALE THREAD  
SEE TABLE 2





TABLE 1—ENVELOPE AND MOUNTING DIMENSIONS

BORE	BD	E	EE	F	G	J	K	TD +.000 -.001	TL	TM	UM	UT	UV	LB*	P*	Style DD min stroke
1.50	1 1/4	2	3/8	3/8	1 1/2	1	1/4	1	1	2 1/2	4 1/2	4	2 1/2	4	2 1/4	1/8
2.00	1 1/2	2 1/2	3/8	3/8	1 1/2	1	5/16	1	1	3	5	4 1/2	3	4	2 1/4	3/8
2.50	1 1/2	3	3/8	3/8	1 1/2	1	5/16	1	1	3 1/2	5 1/2	5	3 1/2	4 1/8	2 3/8	1/4
3.25	2	3 3/4	1/2	3/8	1 1/2	1 1/4	3/8	1	1	4 1/2	6 1/2	5 3/4	4 1/4	4 7/8	2 5/8	3/4
4.00	2	4 1/2	1/2	5/8	1 3/4	1 1/4	3/8	1	1	5 1/4	7 1/4	6 1/2	5	4 7/8	2 5/8	3/4
5.00	2	5 1/2	1/2	5/8	1 3/4	1 1/4	7/16	1	1	6 1/4	8 1/4	7 1/2	6	5 1/8	2 7/8	1/2
6.00	2 1/2	6 1/2	3/4	3/4	2	1 1/2	7/16	1 3/8	1 3/8	7 5/8	10 3/8	8 3/4	7	5 3/4	3 1/8	1

TABLE 2—ROD DIMENSIONS

TABLE 3—ENVELOPE AND MOUNTING DIMENSIONS

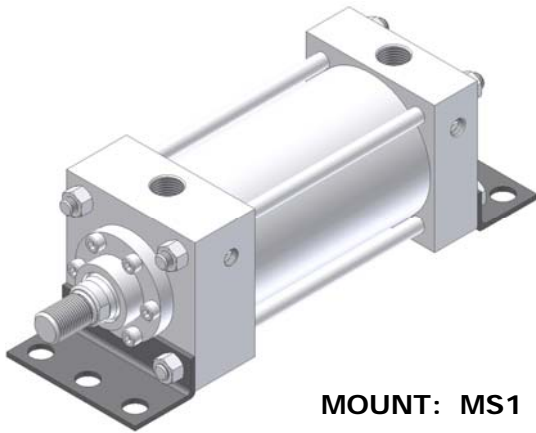
ROD EXTENSIONS AND PILOT DIMENSIONS

BORE	MM	CC	KK	A	B	C	D	LA	NA	V	W		RD	Y	XG	X1 min	ZB*	XJ*
1.50	5/8 (STD)	1/2-20	7/16-20	3/4	1.124	3/8	1/2	1 3/8	9/16	1/4	5/8		2 1/8	1 15/16	1 3/4	3 3/16	4 7/8	4 1/8
	1	7/8-14	3/4-16	1 1/8	1.499	1/2	7/8	2 1/8	15/16	1/2	1		2 1/2	2 5/16	2 1/8	3 9/16	5 1/4	4 1/2
	1 3/8	1 1/4-12	1-14	1 5/8	1.999	5/8	1 1/8	2 7/8	1 5/16	5/8	1 1/4		3	2 9/16	2 3/8	3 15/16	5 9/16	4 3/4
2.00	5/8 (STD)	1/2-20	7/16-20	3/4	1.124	3/8	1/2	1 3/8	9/16	1/4	5/8		2 1/8	1 15/16	1 3/4	3 5/16	4 15/16	4 1/8
	1	7/8-14	3/4-16	1 1/8	1.499	1/2	7/8	2 1/8	15/16	1/2	1		2 1/2	2 5/16	2 1/8	3 11/16	5 5/16	4 1/2
	1 3/8	1 1/4-12	1-14	1 5/8	1.999	5/8	1 1/8	2 7/8	1 5/16	5/8	1 1/4		3	2 9/16	2 3/8	3 15/16	5 9/16	4 3/4
	1 3/4	1 1/2-12	1 1/4-12	2	2.374	3/4	1 1/2	3 1/2	1 11/16	3/4	1 1/2		3 1/2	2 13/16	2 5/8	4 3/16	5 15/16	5 1/8
2.50	5/8 (STD)	1/2-20	7/16-20	3/4	1.124	3/8	1/2	1 3/8	9/16	1/4	5/8		2 1/8	1 15/16	1 3/4	3 5/16	5 1/16	4 1/4
	1	7/8-14	3/4-16	1 1/8	1.499	1/2	7/8	2 1/8	15/16	1/2	1		2 1/2	2 5/16	2 1/8	3 11/16	5 7/16	4 5/8
	1 3/8	1 1/4-12	1-14	1 5/8	1.999	5/8	1 1/8	2 7/8	1 5/16	5/8	1 1/4		3	2 9/16	2 3/8	3 15/16	5 11/16	4 7/8
	1 3/4	1 1/2-12	1 1/4-12	2	2.374	3/4	1 1/2	3 1/2	1 11/16	3/4	1 1/2		3 1/2	2 13/16	2 5/8	4 3/16	5 15/16	5 1/8
	2	1 3/4-12	1 1/2-12	2 1/4	2.624	7/8	1 11/16	3 5/8	1 15/16	1/2	1 3/8		4	3 1/16	2 7/8	4 13/16	6 5/8	5 5/8
3.25	1 (STD)	7/8-14	3/4-16	1 1/8	1.499	1/2	7/8	2 1/8	15/16	1/4	3/4		2 1/2	2 7/16	2 1/4	4 3/16	6	5
	1 3/8	1 1/4-12	1-14	1 5/8	1.999	5/8	1 1/8	2 7/8	1 5/16	3/8	1		3	2 11/16	2 1/2	4 7/16	6 1/4	5 1/4
	1 3/4	1 1/2-12	1 1/4-12	2	2.374	3/4	1 1/2	3 1/2	1 11/16	1/2	1 1/4		3 1/2	2 15/16	2 3/4	4 11/16	6 1/2	5 1/2
	2	1 3/4-12	1 1/2-12	2 1/4	2.624	7/8	1 11/16	3 5/8	1 15/16	1/2	1 3/8		4	3 1/16	2 7/8	4 13/16	6 5/8	5 5/8
	2 1/2	2 1/4-12	1 7/8-12	3	3.124	1	2 1/16	4 1/2	2 3/8	5/8	1 5/8		4 1/2	3 5/16	3 1/8	5 1/16	6 7/8	5 7/8
	3	2 3/4-12	2 1/4-12	3 1/2	3.749	1	2 5/8	5	2 7/8	5/8	1 5/8		5 1/4	3 5/16	3 1/8	5 1/16	7 3/16	6 1/8
4.00	1 (STD)	7/8-14	3/4-16	1 1/8	1.499	1/2	7/8	2 1/8	15/16	1/4	3/4		2 1/2	2 7/16	2 1/4	4 3/16	6	5
	1 3/8	1 1/4-12	1-14	1 5/8	1.999	5/8	1 1/8	2 7/8	1 5/16	3/8	1		3	2 11/16	2 1/2	4 7/16	6 1/4	5 1/4
	1 3/4	1 1/2-12	1 1/4-12	2	2.374	3/4	1 1/2	3 1/2	1 11/16	1/2	1 1/4		3 1/2	2 15/16	2 3/4	4 11/16	6 1/2	5 1/2
	2	1 3/4-12	1 1/2-12	2 1/4	2.624	7/8	1 11/16	3 5/8	1 15/16	1/2	1 3/8		4	3 1/16	2 5/8	4 13/16	6 5/8	5 5/8
	2 1/2	2 1/4-12	1 7/8-12	3	3.124	1	2 1/16	4 1/2	2 3/8	5/8	1 5/8		4 1/2	3 5/16	3 1/8	5 1/16	6 7/8	5 7/8
	3	2 3/4-12	2 1/4-12	3 1/2	3.749	1	2 5/8	5	2 7/8	5/8	1 5/8		5 1/4	3 5/16	3 1/8	5 1/16	7 3/16	6 1/8
	3 1/2	3 1/4-12	2 1/2-12	3 1/2	4.249	1	3	5	3 3/8	5/8	1 5/8		5 3/4	3 7/16	3 1/8	5 1/16	7 3/16	6 1/8
5.00	1 (STD)	7/8-14	3/4-16	1 1/8	1.499	1/2	7/8	2 1/8	15/16	1/4	3/4		2 1/2	2 7/16	2 1/4	4 5/16	6 5/16	5 1/4
	1 3/8	1 1/4-12	1-14	1 5/8	1.999	5/8	1 1/8	2 7/8	1 5/16	3/8	1		3	2 11/16	2 1/2	4 7/16	6 9/16	5 1/2
	1 3/4	1 1/2-12	1 1/4-12	2	2.374	3/4	1 1/2	3 1/2	1 11/16	1/2	1 1/4		3 1/2	2 15/16	2 3/4	4 11/16	6 13/16	5 3/4
	2	1 3/4-12	1 1/2-12	2 1/4	2.624	7/8	1 11/16	3 5/8	1 15/16	1/2	1 3/8		4	3 1/16	2 7/8	4 13/16	6 15/16	5 7/8
	2 1/2	2 1/4-12	1 7/8-12	3	3.124	1	2 1/16	4 1/2	2 3/8	5/8	1 5/8		4 1/2	3 5/16	3 1/8	5 1/16	7 3/16	6 1/8
	3	2 3/4-12	2 1/4-12	3 1/2	3.749	1	2 5/8	5	2 7/8	5/8	1 5/8		5 1/4	3 5/16	3 1/8	5 1/16	7 3/16	6 1/8
	3 1/2	3 1/4-12	2 1/2-12	3 1/2	4.249	1	3	5	3 3/8	5/8	1 5/8		5 3/4	3 7/16	3 1/8	5 1/16	7 3/16	6 1/8
	4	3 3/4-12	3-12	4	4.749	1	3 3/8	5 1/2	3 7/8	1/2	1 1/2		6 1/2	3 7/16	3 1/4	5 9/16	7 11/16	6 1/2
6.00	1 3/8 (STD)	1 1/4-12	1-14	1 5/8	1.999	5/8	1 1/8	2 7/8	1 5/16	1/4	7/8		3	2 13/16	2 5/8	4 15/16	7 1/16	5 7/8
	1 3/4	1 1/2-12	1 1/4-12	2	2.374	3/4	1 1/2	3 1/2	1 11/16	3/8	1 1/8		3 1/2	3 1/16	2 7/8	5 3/16	7 5/16	6 1/8
	2	1 3/4-12	1 1/2-12	2 1/4	2.624	7/8	1 11/16	3 5/8	1 15/16	3/8	1 1/4		4	3 3/16	3	5 5/16	7 7/16	6 1/4
	2 1/2	2 1/4-12	1 7/8-12	3	3.124	1	2 1/16	4 1/2	2 3/8	1/2	1 1/2		4 1/2	3 7/16	3 1/4	5 9/16	7 11/16	6 1/2
	3	2 3/4-12	2 1/4-12	3 1/2	3.749	1	2 5/8	5	2 7/8	1/2	1 1/2		5 1/4	3 7/16	3 1/4	5 9/16	7 11/16	6 1/2
	3 1/2	3 1/4-12	2 1/2-12	3 1/2	4.249	1	3	5	3 3/8	1/2	1 1/2		5 3/4	3 7/16	3 1/4	5 9/16	7 11/16	6 1/2
	4	3 3/4-12	3-12	4	4.749	1	3 3/8	5 1/2	3 7/8	1/2	1 1/2		6 1/2	3 7/16	3 1/4	5 9/16	7 11/16	6 1/2

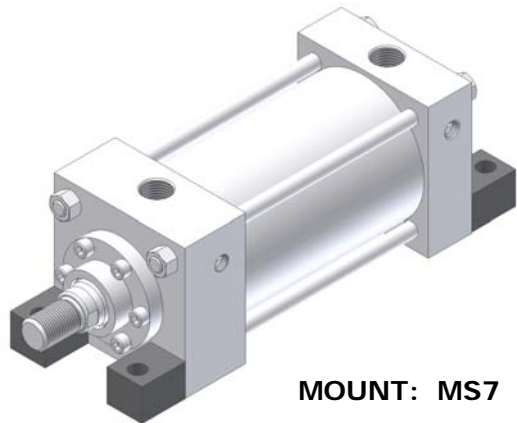
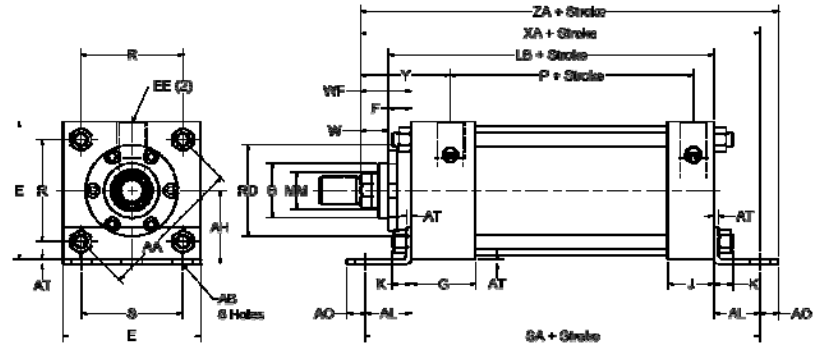




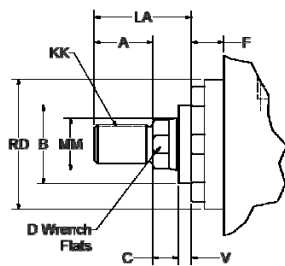
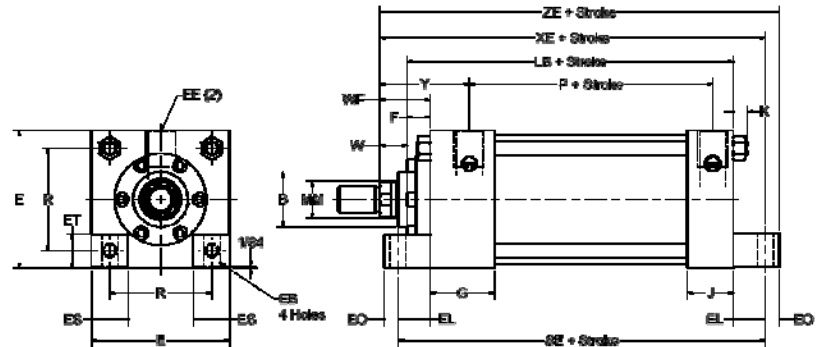
1.5" BORE TO 6" BORE



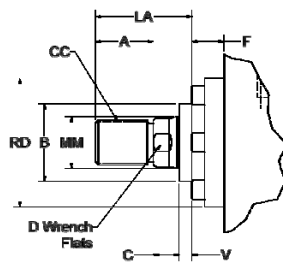
MOUNT: MS1



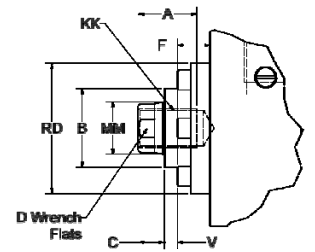
MOUNT: MS7



STYLE "4" SMALL MALE  
SEE TABLE 2



STYLE "8" INTERMEDIATE  
MALE  
SEE TABLE 2



STYLE "9" FEMALE THREAD  
SEE TABLE 2





TABLE 1—ENVELOPE AND MOUNTING DIMENSIONS

BORE	AB	AH	AL	AO	AT	E	EB	EE	EL	EO	ES	ET	F	G	J	K	R	S	SA*	SE*	LB*	P*
1.50	7/16	1 3/16	1	3/8	1/8	2	5/16	3/8	3/4	1/4	9/16	1 7/32	3/8	1 1/2	1	1/4	1.43	1 1/4	6	5 1/2	4	2 1/4
2.00	7/16	1 7/16	1	3/8	1/8	2 1/2	3/8	3/8	1 5/16	5/16	5/8	5/8	3/8	1 1/2	1	5/16	1.84	1 3/4	6	5 7/8	4	2 1/4
2.50	7/16	1 5/8	1	3/8	1/8	3	3/8	3/8	1 1/16	5/16	13/16	25/32	3/8	1 1/2	1	5/16	2.19	2 1/4	6 1/8	6 1/4	4 1/8	2 3/8
3.25	9/16	1 15/16	1 1/4	1/2	1/8	3 3/4	7/16	1/2	7/8	3/8	1	15/16	3/8	1 1/2	1 1/4	3/8	2.76	2 3/4	7 3/8	6 5/8	4 7/8	2 5/8
4.00	9/16	2 1/4	1 1/4	1/2	1/8	4 1/2	7/16	1/2	1	3/8	1 1/4	1 5/32	5/8	1 3/4	1 1/4	3/8	3.32	3 1/2	7 3/8	6 7/8	4 7/8	2 5/8
5.00	11/16	2 3/4	1 3/8	5/8	3/16	5 1/2	9/16	1/2	1 1/16	1/2	1 3/8	1 3/8	5/8	1 3/4	1 1/4	7/16	4.10	4 1/4	7 7/8	7 1/4	5 1/8	2 7/8
6.00	13/16	3 1/4	1 3/8	5/8	3/16	6 1/2	9/16	3/4	1	1/2	1 3/4	1 19/32	3/4	2	1 1/2	7/16	4.88	5 1/4	8 1/2	7 3/4	5 3/4	3 1/8

TABLE 2—ROD DIMENSIONS

ROD EXTENSIONS AND PILOT DIMENSIONS

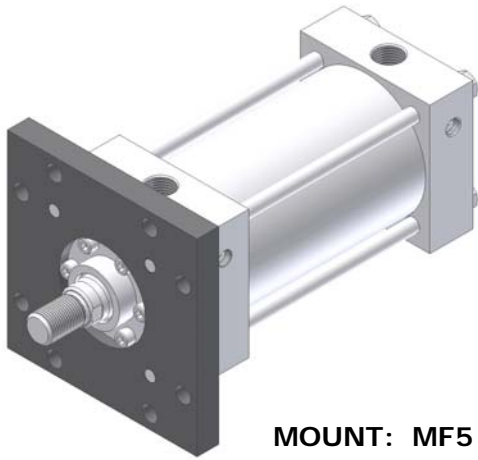
TABLE 3—ENVELOPE AND MOUNTING DIMENSIONS

BORE	MM	CC	KK	A	B	C	D	LA	NA	V	W	RD	Y	XA*	XE*	ZA*	ZE*
1.50	5/8 (STD)	1/2-20	7/16-20	3/4	1.124	3/8	1/2	1 3/8	9/16	1/4	5/8	2 1/8	1 15/16	5 5/8	5 3/8	6	5 5/8
	1	7/8-14	3/4-16	1 1/8	1.499	1/2	7/8	2 1/8	15/16	1/2	1	2 1/2	2 5/16	6	5 3/4	6 3/8	6
2.00	5/8 (STD)	1/2-20	7/16-20	3/4	1.124	3/8	1/2	1 3/8	9/16	1/4	5/8	2 1/8	1 15/16	5 5/8	5 9/16	6	5 7/8
	1	7/8-14	3/4-16	1 1/8	1.499	1/2	7/8	2 1/8	15/16	1/2	1	2 1/2	2 5/16	6	5 15/16	6 3/8	6 1/4
	1 3/8	1 1/4-12	1-14	1 5/8	1.999	5/8	1 1/8	2 7/8	1 5/16	5/8	1 1/4	3	2 9/16	6 1/4	6 3/16	6 5/8	6 1/2
2.50	5/8 (STD)	1/2-20	7/16-20	3/4	1.124	3/8	1/2	1 3/8	9/16	1/4	5/8	2 1/8	1 15/16	5 3/4	5 13/16	6 1/8	6 1/8
	1	7/8-14	3/4-16	1 1/8	1.499	1/2	7/8	2 1/8	15/16	1/2	1	2 1/2	2 5/16	6 1/8	6 3/16	6 3/8	6 1/2
	1 3/8	1 1/4-12	1-14	1 5/8	1.999	5/8	1 1/8	2 7/8	1 5/16	5/8	1 1/4	3	2 9/16	6 3/8	6 7/16	6 3/4	6 3/4
	1 3/4	1 1/2-12	1 1/4-12	2	2.374	3/4	1 1/2	3 1/2	1 11/16	3/4	1 1/2	3 1/2	2 13/16	6 5/8	6 11/16	7	7
3.25	1 (STD)	7/8-14	3/4-16	1 1/8	1.499	1/2	7/8	2 1/8	15/16	1/4	3/4	2 1/2	2 7/16	6 7/8	6 1/2	7 3/8	6 7/8
	1 3/8	1 1/4-12	1-14	1 5/8	1.999	5/8	1 1/8	2 7/8	1 5/16	3/8	1	3	2 11/16	7 1/8	6 3/4	7 5/8	7 1/8
	1 3/4	1 1/2-12	1 1/4-12	2	2.374	3/4	1 1/2	3 1/2	1 11/16	1/2	1 1/4	3 1/2	2 15/16	7 3/8	7	7 7/8	7 3/8
	2	1 3/4-12	1 1/2-12	2 1/4	2.624	7/8	1 11/16	3 5/8	1 15/16	1/2	1 3/8	4	3 1/16	7 1/2	7 1/8	8	7 1/2
	2 1/2	2 1/4-12	1 7/8-12	3	3.124	1	2 1/16	4 1/2	2 3/8	5/8	1 5/8	4 1/2	3 5/16	7 3/4	7 1/2	8 1/4	7 5/8
5.00	1 (STD)	7/8-14	3/4-16	1 1/8	1.499	1/2	7/8	2 1/8	15/16	1/4	3/4	2 1/2	2 7/16	7 1/4	6 15/16	7 7/8	7 7/16
	1 3/8	1 1/4-12	1-14	1 5/8	1.999	5/8	1 1/8	2 7/8	1 5/16	3/8	1	3	2 11/16	7 1/2	7 3/16	8 1/8	7 11/16
	1 3/4	1 1/2-12	1 1/4-12	2	2.374	3/4	1 1/2	3 1/2	1 11/16	1/2	1 1/4	3 1/2	2 15/16	7 3/4	7 7/16	8 3/8	7 15/16
	2	1 3/4-12	1 1/2-12	2 1/4	2.624	7/8	1 11/16	3 5/8	1 15/16	1/2	1 3/8	4	3 1/16	7 7/8	7 9/16	8 1/2	8 1/16
	2 1/2	2 1/4-12	1 7/8-12	3	3.124	1	2 1/16	4 1/2	2 3/8	5/8	1 5/8	4 1/2	3 5/16	8 1/8	7 13/16	8 3/4	8 5/16
	3	2 3/4-12	2 1/4-12	3 1/2	3.749	1	2 5/8	5	2 7/8	5/8	1 5/8	5 1/4	3 5/16	8 1/8	7 13/16	8 3/4	8 5/16
6.00	3 1/2	3 1/4-12	2 1/2-12	3 1/2	4.249	1	3	5	3 3/8	5/8	1 5/8	5 3/4	3 7/16	8 1/8	7 13/16	8 3/4	8 5/16
	1 3/8 (STD)	1 1/4-12	1-14	1 5/8	1.999	5/8	1 1/8	2 7/8	1 5/16	1/4	7/8	3	2 13/16	8	7 5/8	8 5/8	8 1/8
	1 3/4	1 1/2-12	1 1/4-12	2	2.374	3/4	1 1/2	3 1/2	1 11/16	3/8	1 1/8	3 1/2	3 1/16	8 1/4	7 7/8	8 7/8	8 3/8
	2	1 3/4-12	1 1/2-12	2 1/4	2.624	7/8	1 11/16	3 5/8	1 15/16	3/8	1 1/4	4	3 3/16	8 3/8	8	9	8 1/2
	2 1/2	2 1/4-12	1 7/8-12	3	3.124	1	2 1/16	4 1/2	2 3/8	1/2	1 1/2	4 1/2	3 7/16	8 5/8	8 1/4	9 1/4	8 3/4
	3	2 3/4-12	2 1/4-12	3 1/2	3.749	1	2 5/8	5	2 7/8	1/2	1 1/2	5 1/4	3 7/16	8 5/8	8 1/4	9 1/4	8 3/4
	3 1/2	3 1/4-12	2 1/2-12	3 1/2	4.249	1	3	5	3 3/8	1/2	1 1/2	5 3/4	3 7/16	8 5/8	8 1/4	9 1/4	8 3/4
4	3 3/4-12	3-12	4	4.749	1	3 3/8	5 1/2	3 7/8	1/2	1 1/2	6 1/2	3 7/16	8 5/8	8 1/4	9 1/4	8 3/4	

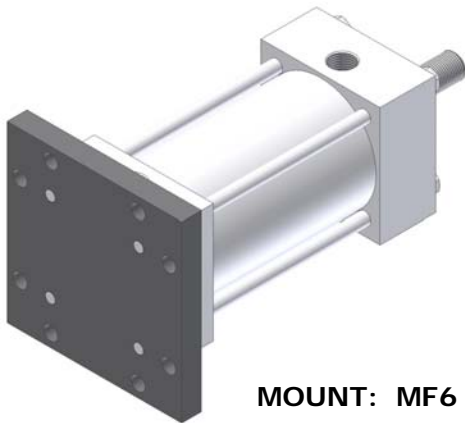
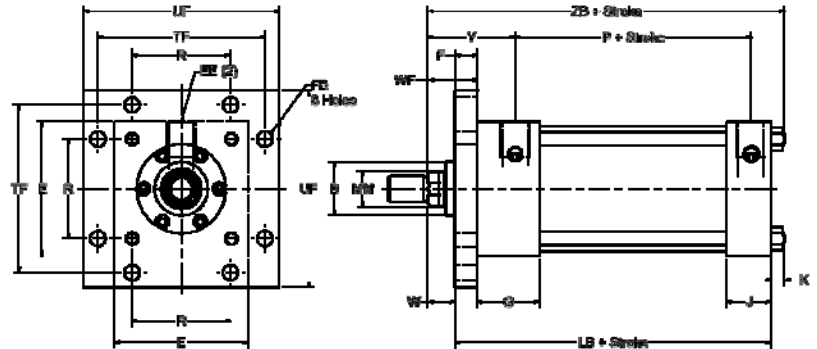




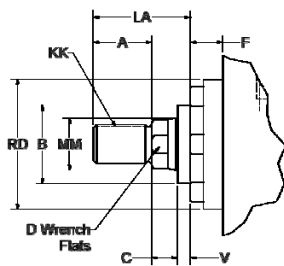
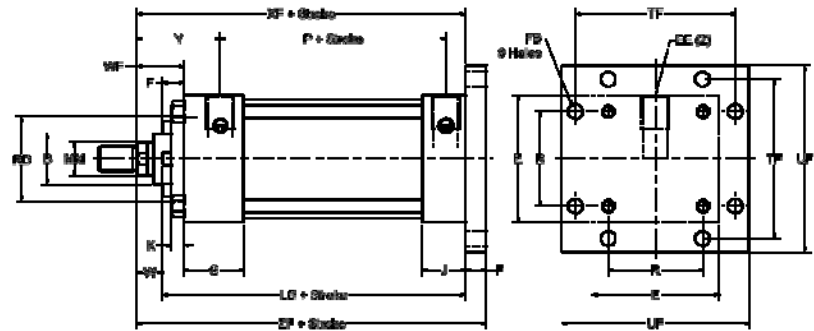
1.5" BORE TO 6" BORE



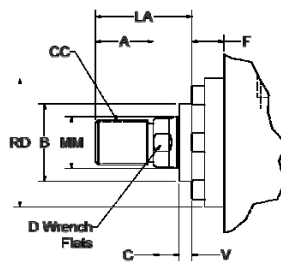
MOUNT: MF5



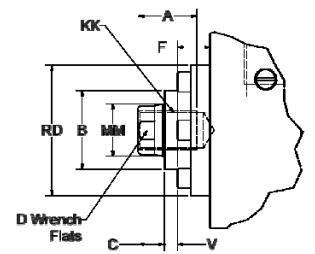
MOUNT: MF6



STYLE "4" SMALL MALE  
SEE TABLE 2



STYLE "8" INTERMEDIATE  
MALE  
SEE TABLE 2



STYLE "9" FEMALE THREAD  
SEE TABLE 2





TABLE 1—ENVELOPE AND MOUNTING DIMENSIONS

BORE	E	EE	F	FB	G	J	K	R	TF	UF	LB*	P*
1.50	2	3/8	3/8	5/16	1 1/2	1	1/4	1.43	2 3/4	3 3/8	4	2 1/4
2.00	2 1/2	3/8	3/8	3/8	1 1/2	1	5/16	1.84	3 3/8	4 1/8	4	2 1/4
2.50	3	3/8	3/8	3/8	1 1/2	1	5/16	2.19	3 7/8	4 5/8	4 1/8	2 3/8
3.25	3 3/4	1/2	3/8	7/16	1 1/2	1 1/4	3/8	2.76	4 11/16	5 1/2	4 7/8	2 5/8
4.00	4 1/2	1/2	5/8	7/16	1 3/4	1 1/4	3/8	3.32	5 7/16	6 1/4	4 7/8	2 5/8
5.00	5 1/2	1/2	5/8	9/16	1 3/4	1 1/4	7/16	4.10	6 5/8	7 5/8	5 1/8	2 7/8
6.00	6 1/2	3/4	3/4	9/16	2	1 1/2	7/16	4.88	7 5/8	8 5/8	5 3/4	3 1/8

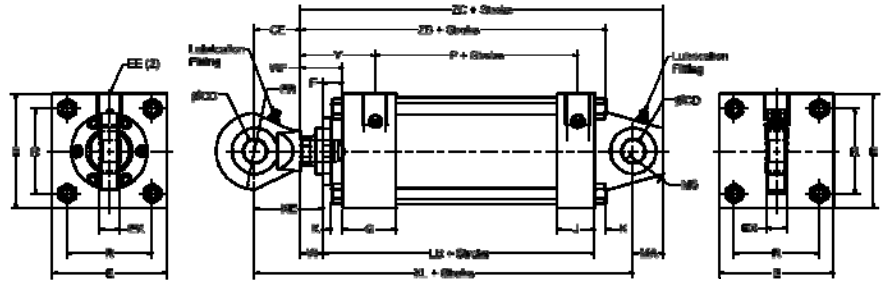
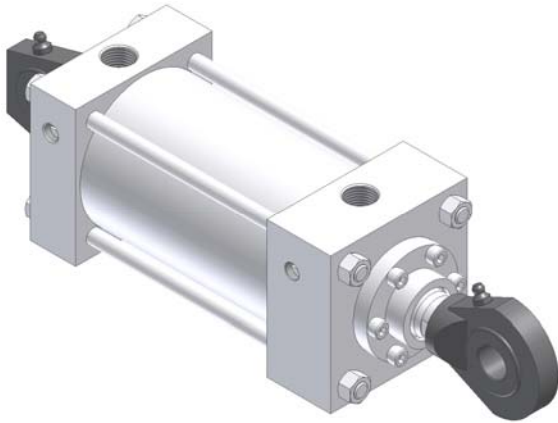
TABLE 2—ROD DIMENSIONS

ROD EXTENSIONS AND PILOT DIMENSIONS

TABLE 3—ENVELOPE AND MOUNTING DIMENSIONS

BORE	MM	CC	KK	ROD EXTENSIONS AND PILOT DIMENSIONS								TABLE 3—ENVELOPE AND MOUNTING DIMENSIONS					
				A	B +.000 -.002	C	D	LA	NA	V	W	WF	RD	Y	XF*	ZB*	ZF*
1.50	5/8 (STD)	1/2-20	7/16-20	3/4	1.124	3/8	1/2	1 3/8	9/16	1/4	5/8	1	2 1/8	1 15/16	4 5/8	4 7/8	5
	1	7/8-14	3/4-16	1 1/8	1.499	1/2	7/8	2 1/8	15/16	1/2	1	1 3/8	2 1/2	2 5/16	5	5 1/4	5 3/8
2.00	5/8 (STD)	1/2-20	7/16-20	3/4	1.124	3/8	1/2	1 3/8	9/16	1/4	5/8	1	2 1/8	1 15/16	4 5/8	4 15/16	5
	1	7/8-14	3/4-16	1 1/8	1.499	1/2	7/8	2 1/8	15/16	1/2	1	1 3/8	2 1/2	2 5/16	5	5 5/16	5 3/8
	1 3/8	1 1/4-12	1-14	1 5/8	1.999	5/8	1 1/8	2 7/8	1 5/16	5/8	1 1/4	1 5/8	3	2 9/16	5 1/4	5 9/16	5 5/8
2.50	5/8 (STD)	1/2-20	7/16-20	3/4	1.124	3/8	1/2	1 3/8	9/16	1/4	5/8	1	2 1/8	1 15/16	4 3/4	5 1/16	5 1/8
	1	7/8-14	3/4-16	1 1/8	1.499	1/2	7/8	2 1/8	15/16	1/2	1	1 3/8	2 1/2	2 5/16	5 1/8	5 7/16	5 1/2
	1 3/8	1 1/4-12	1-14	1 5/8	1.999	5/8	1 1/8	2 7/8	1 5/16	5/8	1 1/4	1 5/8	3	2 9/16	5 3/8	5 11/16	5 3/4
	1 3/4	1 1/2-12	1 1/4-12	2	2.374	3/4	1 1/2	3 1/2	1 11/16	3/4	1 1/2	1 7/8	3 1/2	2 13/16	5 5/8	5 15/16	6
3.25	1 (STD)	7/8-14	3/4-16	1 1/8	1.499	1/2	7/8	2 1/8	15/16	1/4	3/4	1 3/8	2 1/2	2 7/16	5 5/8	6	6 1/4
	1 3/8	1 1/4-12	1-14	1 5/8	1.999	5/8	1 1/8	2 7/8	1 5/16	3/8	1	1 5/8	3	2 11/16	5 7/8	6 1/4	6 1/2
	1 3/4	1 1/2-12	1 1/4-12	2	2.374	3/4	1 1/2	3 1/2	1 11/16	1/2	1 1/4	1 7/8	3 1/2	2 15/16	6 1/8	6 1/2	6 3/4
4.00	2	1 3/4-12	1 1/2-12	2 1/4	2.624	7/8	1 11/16	3 5/8	1 15/16	1/2	1 3/8	2	4	3 1/16	6 1/4	6 5/8	6 7/8
	1 (STD)	7/8-14	3/4-16	1 1/8	1.499	1/2	7/8	2 1/8	15/16	1/4	3/4	1 3/8	2 1/2	2 7/16	5 5/8	6	6 1/4
	1 3/8	1 1/4-12	1-14	1 5/8	1.999	5/8	1 1/8	2 7/8	1 5/16	3/8	1	1 5/8	3	2 11/16	5 7/8	6 1/4	6 1/2
	1 3/4	1 1/2-12	1 1/4-12	2	2.374	3/4	1 1/2	3 1/2	1 11/16	1/2	1 1/4	1 7/8	3 1/2	2 15/16	6 1/8	6 1/2	6 3/4
	2	1 3/4-12	1 1/2-12	2 1/4	2.624	7/8	1 11/16	3 5/8	1 15/16	1/2	1 3/8	2	4	3 1/16	6 1/4	6 5/8	6 7/8
5.00	2 1/2	2 1/4-12	1 7/8-12	3	3.124	1	2 1/16	4 1/2	2 3/8	5/8	1 5/8	2 1/4	4 1/2	3 5/16	6 1/2	6 7/8	7 1/8
	1 (STD)	7/8-14	3/4-16	1 1/8	1.499	1/2	7/8	2 1/8	15/16	1/4	3/4	1 3/8	2 1/2	2 7/16	5 7/8	6 5/16	6 1/2
	1 3/8	1 1/4-12	1-14	1 5/8	1.999	5/8	1 1/8	2 7/8	1 5/16	3/8	1	1 5/8	3	2 11/16	6 1/8	6 9/16	6 3/4
	1 3/4	1 1/2-12	1 1/4-12	2	2.374	3/4	1 1/2	3 1/2	1 11/16	1/2	1 1/4	1 7/8	3 1/2	2 15/16	6 3/8	6 13/16	7
	2	1 3/4-12	1 1/2-12	2 1/4	2.624	7/8	1 11/16	3 5/8	1 15/16	1/2	1 3/8	2	4	3 1/16	6 1/2	6 15/16	7 1/8
	2 1/2	2 1/4-12	1 7/8-12	3	3.124	1	2 1/16	4 1/2	2 3/8	5/8	1 5/8	2 1/4	4 1/2	3 5/16	6 3/4	7 3/16	7 3/8
6.00	3	2 3/4-12	2 1/4-12	3 1/2	3.749	1	2 5/8	5	2 7/8	5/8	1 5/8	2 1/4	5 1/4	3 5/16	6 3/4	7 3/16	7 3/8
	3 1/2	3 1/4-12	2 1/2-12	3 1/2	4.249	1	3	5	3 3/8	5/8	1 5/8	2 1/4	5 3/4	3 7/16	6 3/4	7 3/16	7 3/8
	1 3/8 (STD)	1 1/4-12	1-14	1 5/8	1.999	5/8	1 1/8	2 7/8	1 5/16	1/4	7/8	1 5/8	3	2 13/16	6 5/8	7 1/16	7 3/8
	1 3/4	1 1/2-12	1 1/4-12	2	2.374	3/4	1 1/2	3 1/2	1 11/16	3/8	1 1/8	1 7/8	3 1/2	3 1/16	6 7/8	7 5/16	7 5/8
	2	1 3/4-12	1 1/2-12	2 1/4	2.624	7/8	1 11/16	3 5/8	1 15/16	3/8	1 1/4	2	4	3 3/16	7	7 7/16	7 3/4
6.00	2 1/2	2 1/4-12	1 7/8-12	3	3.124	1	2 1/16	4 1/2	2 3/8	1/2	1 1/2	2 1/4	4 1/2	3 7/16	7 1/4	7 11/16	8
	3	2 3/4-12	2 1/4-12	3 1/2	3.749	1	2 5/8	5	2 7/8	1/2	1 1/2	2 1/4	5 1/4	3 7/16	7 1/4	7 11/16	8
	3 1/2	3 1/4-12	2 1/2-12	3 1/2	4.249	1	3	5	3 3/8	1/2	1 1/2	2 1/4	5 3/4	3 7/16	7 1/4	7 11/16	8
	4	3 3/4-12	3-12	4	4.749	1	3 3/8	5 1/2	3 7/8	1/2	1 1/2	2 1/4	6 1/2	3 7/16	7 1/4	7 11/16	8





SPHERICAL BEARING MOUNT: SB

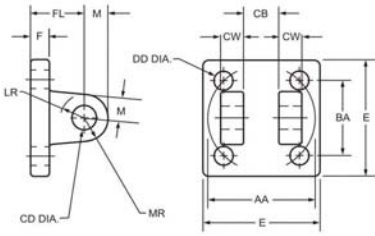
TABLE 1—DIMENSIONS

BORE	ROD DIA.	KK Style 9	KK Style 7	A	W	XC	XL	ZC	KE	CD	CE	ER	EX	LE	MA	MS	NR	MAX PSI
1.50	5/8	7/16-20	—	3/4	5/8	5 3/8	6 1/4	6 1/8	1 1/2	—								
	1	++	7/16-20	3/4	1	5 3/4	6 5/8	6 1/2	1 7/8	.0005 .5000	7/8	13/16	7/16	3/4	3/4	15/16	5/8	250
2.00	5/8	7/16-20	—	3/4	5/8	5 3/8	6 1/4	6 1/8	1 1/2	—								
	1	++	7/16-20	3/4	1	5 3/4	6 5/8	6 1/2	1 7/8	.0005 .5000	7/8	13/16	7/16	3/4	3/4	15/16	5/8	250
2.50	1 3/8	++	7/16-20	3/4	1 1/4	6	6 7/8	6 3/4	2 1/8									
	5/8	7/16-20	—	3/4	5/8	5 1/2	6 3/8	6 1/4	1 1/2	—								
	1	++	7/16-20	3/4	1	5 7/8	6 3/4	6 5/8	1 7/8	.005 .7500	7/8	13/16	7/16	3/4	3/4	15/16	5/8	250
3.25	1 3/8	++	7/16-20	3/4	1 1/4	6 1/8	7	6 7/8	2 1/8									
	1	3/4-16	—	1 1/8	3/4	6 7/8	8 1/8	7 7/8	2	—								
	1 3/8	++	3/4-16	1 1/8	1	7 1/8	8 3/8	8 1/8	2 1/4	.005 .7500	1 1/4	1 1/8	21/32	1 1/16	1	1 3/8	1	250
4.00	1 3/4	++	3/4-16	1 1/8	1 1/4	7 3/8	8 5/8	8 3/8	2 1/2									
	2	++	3/4-16	1 1/8	1 3/8	7 1/2	8 3/4	8 1/2	2 5/8									
	1	3/4-16	—	1 1/8	3/4	6 7/8	8 1/8	7 7/8	2	—								
	1 3/8	++	3/4-16	1 1/8	1	7 1/8	8 3/8	8 1/8	2 1/4	.0005 .7500	1 1/4	1 1/8	21/32	1 1/16	1	1 3/8	1	250
	2 1/2	++	3/4-16	1 1/8	1 5/8	7 3/4	9	8 3/4	2 7/8									
5.00	2	++	3/4-16	1 1/8	1 3/8	7 3/4	9	8 3/4	2 5/8									
	1 3/4	++	3/4-16	1 1/8	1 1/4	7 5/8	8 7/8	8 5/8	2 1/2									
	1	3/4-16	—	1 1/8	3/4	7 1/8	8 3/8	8 1/8	2	—								
	1 3/8	++	3/4-16	1 1/8	1	7 3/8	8 5/8	8 3/8	2 1/4	.005 .7500	1 1/4	1 1/8	21/32	1 1/16	1	1 3/8	1	250
	3	++	3/4-16	1 1/8	1 5/8	8	9 1/4	9	2 7/8									
	3 1/2	++	3/4-16	1 1/8	1 5/8	8	9 1/4	9	2 7/8									
6.00	1 3/8	1-14	—	1 5/8	7/8	8 1/8	10	9 3/8	2 3/4									
	1 3/4	++	1-14	1 5/8	1 1/8	8 3/8	10 1/4	9 5/8	3									
	2	++	1-14	1 5/8	1 1/4	8 1/2	10 3/8	9 3/4	3 1/8									
	2 1/2	++	1-14	1 5/8	1 1/2	8 3/4	10 5/8	10	3 3/8	.0005 1.000	1 7/8	1 1/4	7/8	1 7/16	1	1 11/16	1	250
	3	++	1-14	1 5/8	1 1/2	8 3/4	10 5/8	10	3 3/8									
	3 1/2	++	1-14	1 5/8	1 1/2	8 3/4	10 5/8	10	3 3/8									



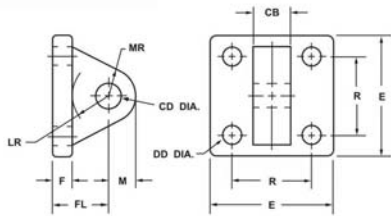


# SL MOUNTING ACCESSORIES



CLEVIS BRACKETS

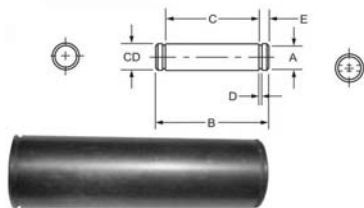
PT#	AA	BA	CB	CD	CW	DD	E	F	FL	LR	M	MR
DCB-05	2.3	1 5/8	0.765	1/2	1/2	3/8-24	2 1/2	3/8	1 1/8	1/2	1/2	9/16
DCB-06	2.9	2 1/16	1.265	3/4	5/8	1/2-20	3	5/8	1 7/8	1	3/4	1 1/16
DCB-07	3.6	2 9/16	1.265	3/4	5/8	1/2-20	3 1/2	5/8	1 7/8	1 1/16	3/4	1 1/16
DCB-10	4.6	3 1/4	1.515	1	3/4	5/8-18	4 1/2	3/4	2 1/4	1 1/4	1	1 1/8
DCB-13	5.4	3 13/16	2.032	1 3/8	1	5/8-18	5	7/8	3	1 7/8	1 3/8	1 3/4
DCB-17	7.0	4 15/16	2.531	1 3/4	1 1/4	7/8-14	6 1/2	7/8	3 1/8	2	1 3/4	1 7/8
DCB-20	8.1	5 3/4	2.531	2	1 1/4	1-14	7 1/2	1	3 1/2	2 1/8	2	2 1/8
DCB-25	9.3	6 19/32	3.032	2 1/2	1 1/2	1 1/8-12	8 1/2	1	4	2 5/8	2 1/2	2 1/2
DCB-30	10.6	7 1/2	3.032	3	1 1/2	1 1/4-12	9 1/2	1	4 1/4	2 7/8	2 3/4	2 3/4
DCB-35	13.6	9 5/8	4.032	3 1/2	2	1 3/4-12	12 5/8	1 11/16	5 11/16	3 5/8	3 1/2	3 1/2
DCB-40	16.2	11 1/2	4.032	4	2 1/4	2-12	14 7/8	1 15/16	6 7/16	4	4	4



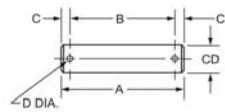
EYE BRACKET

PT#	CB	CD	DD	E	F	FL	LR	M	MR	R
DEB-05	3/4	1/2	13/32	2 1/2	3/8	1 1/8	3/4	1/2	9/16	1.63
DEB-07	1 1/4	3/4	17/32	3 1/2	5/8	1 7/8	1 1/4	3/4	7/8	2.56
DEB-10	1 1/2	1	21/32	4 1/2	3/4	2 1/4	1 1/2	1	1 1/4	3.25
DEB-10H	1 1/2	1	21/32	5	7/8	2 3/8	1 1/2	1	1 1/4	3.25
DEB-13	2	1 3/8	21/32	5	7/8	3	2 1/8	1 3/8	1 5/8	3.81
DEB-17	2 1/2	1 3/4	29/32	6 1/2	7/8	3 1/8	2 1/4	1 3/4	2 1/8	4.95
DEB-17H	2 1/2	1 3/4	29/32	6 1/2	1 1/8	3 3/8	2 1/4	1 3/4	2 1/8	4.95
DEB-20	2 1/2	2	1 1/16	7 1/2	1	3 1/2	2 1/2	2	2 7/16	5.75
DEB-20H	2 1/2	2	1 1/16	7 1/2	1 1/2	4	2 1/2	2	2 7/16	5.75
DEB-25	3	2 1/2	1 3/16	8 1/2	1	4	3	2 1/2	3	6.59
DEB-25H	3	2 1/2	1 3/16	8 1/2	1 3/4	4 3/4	3	2 1/2	3	6.59
DEB-30	3	3	1 5/16	9 1/2	1	4 1/4	3 1/4	3	3 1/4	7.50
DEB-30H	3	3	1 5/16	9 1/2	2	5 1/4	3 1/4	3	3 1/4	7.50
DEB-35	4	3 1/2	1 13/16	12 5/8	1 11/16	5 11/16	4	3 1/2	4 1/8	9.62
DEB-40	4 1/2	4	2 1/16	14 7/8	1 15/16	6 7/16	4 1/2	4	5 1/4	11.50

PINS WITH GROOVES



PINS WITH HOLES



PINS WITH GROOVES

PT#	CD	A	B	C	D	E
DP-05G	.50	.468	2.094	1.875	.041	.109
DP-07G	.75	.704	2.875	2.625	.048	.125
DP-10G	1.00	.940	3.375	3.125	.048	.125
DP-13G	1.375	1.291	4.485	4.187	.056	.149
DP-17G	1.75	1.650	5.547	5.188	.068	.180
DP-20G	2.00	1.886	5.547	5.188	.068	.180
DP-25G	2.50	2.360	6.625	6.188	.086	.219
DP-30G	3.00	2.838	6.780	6.250	.103	.265
DP-35G	3.50	3.316	8.845	8.125	.120	.360
DP-40G	4.00	3.792	9.845	9.125	.120	.360

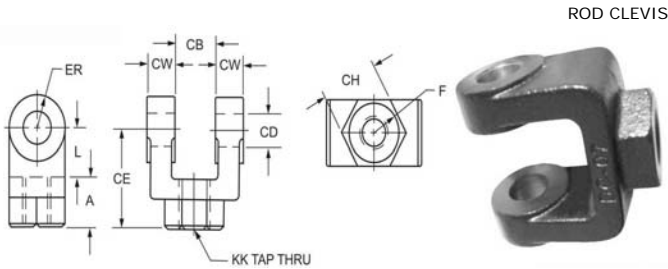
PINS WITH HOLES

PT#	CD	A	B	C	D
DP-05H	.50	2.281	1.938	.172	.106
DP-07H	.75	3.094	2.719	.188	.140
DP-10H	1.00	3.594	3.219	.188	.140
DP-13H	1.375	4.656	4.250	.203	.173
DP-17H	1.75	5.656	5.250	.203	.173
DP-20H	2.00	5.719	5.281	.219	.204
DP-25H	2.50	6.781	6.313	.234	.219
DP-30H	3.00	6.844	6.344	.250	.250
DP-35H	3.50	8.969	8.406	.282	.312
DP-40H	4.00	9.969	9.409	.282	.312





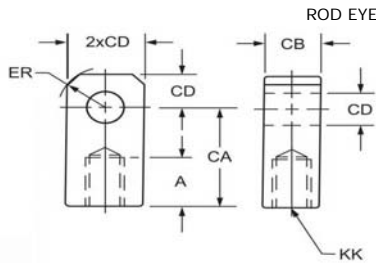
# SL MOUNTING ACCESSORIES



ROD CLEVIS

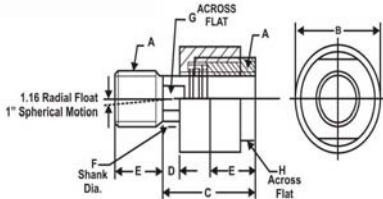


PT#	CB	CD	CE	CH	CW	F	L	A	KK	ER
DC-05	.765	1/2	1 1/2	1	1/2	1	3/4	3/4	7/16-20	1/2
DC-07	1.265	3/4	2 3/8	1 1/4	5/8	1 1/4	1 1/4	1 1/8	3/4-16	3/4
DC-07M	1.265	3/4	2 1/8	1 3/8	5/8	1 1/4	1	1 1/8	3/4-16	3/4
DC-10	1.515	1	3 1/8	1 1/2	3/4	1 1/2	1 1/2	1 5/8	1-14	1
DC-10M	1.515	1	2 15/16	1 1/2	3/4	1 5/8	1 15/16	1 5/8	1-14	1
DC-13	2.032	1 3/8	4 1/8	2	1	2	2 1/8	2	1 1/4-12	1 3/8
DC-13M	2.032	1 3/8	3 3/4	2	1	2	1 3/4	2	1 1/4-12	1 3/8
DC-17	2.531	1 3/4	4 1/2	2 3/8	1 1/4	2 3/8	2 1/4	2 1/4	1 1/2-12	1 3/4
DC-20	2.531	2	5 1/2	2 15/16	1 1/4	2 15/16	2 1/2	3	1 7/8-12	2
DC-25	3.032	2 1/2	6 1/2	3 1/2	1 1/2	3 1/2	3	3 1/2	2 1/4-12	2 1/2
DC-30	3.032	3	6 3/4	3 7/8	1 1/2	3 7/8	3 1/4	3 1/2	2 1/2-12	2 3/4
DC-30M	3.032	3	6 3/4	3 7/8	1 1/2	3 7/8	3 1/4	3 1/2	2 1/2-12	3
DC-35	4.032	3 1/2	8 1/2	5	2	5	4	4 1/2	3 1/4-12	3 1/2
DC-35M	4.032	3 1/2	7 3/4	5	2	5	4 1/4	3 1/2	3 1/4-12	3 1/2
DC-40	4.032	4	10	6 1/8	2 1/4	6 1/8	4 1/2	5 1/2	4-12	4



ROD EYE

PT#	A	CA	CB	CD	ER	KK
DE-05	3/4	1 1/2	3/4	1/2	5/8	7/16-20
DE-07	1 1/8	2 1/16	1 1/4	3/4	7/8	3/4-16
DE-10	1 5/8	2 13/16	1 1/2	1	1 3/16	1-14
DE-10M	1 1/8	2 3/8	1 1/2	1	1 7/16	7/8-14
DE-13	2	3 7/16	2 1/2	1 3/8	1 9/16	1 1/4-12
DE-17	2 1/4	4	2 1/2	1 3/4	2	1 1/2-12
DE-20	3	5	2 1/2	2	2 1/2	1 7/8-12
DE-20M	2 1/4	4 3/8	2 1/2	2	2 7/8	1 3/4-12
DE-25	3 1/2	5 13/16	3	2 1/2	2 13/16	2 1/4-12
DE-30	3 1/2	6 1/8	3	3	3 1/4	2 1/2-12
DE-30M	3 5/8	6 1/2	3 1/2	3	3 1/4	2 3/4-12
DE-35	4 1/2	7 5/8	4	3 1/2	3 7/8	3 1/4-12
DE-35M	5	7 5/8	4	3 1/2	3 7/8	3 1/2-12
DC-40	5 1/2	9 1/8	4 1/2	4	4 7/16	4-12
DE-40M	5 3/4	9 1/8	5	4	4 7/16	4 1/2-12



ALIGNMENT COUPLER



PT#	A	B	C	D	E	F	O	H
DAC-250F	1/4-28	7/8	1 1/4	1/4	5/8	.245	3/16	13/16
DAC-312F	5/16-24	7/8	1 1/4	1/4	5/8	.308	1/4	13/16
DAC-375F	3/8-24	7/8	1 1/4	1/4	5/8	.370	5/16	13/16
DAC-437F	7/16-20	1 1/4	2	1/2	3/4	5/8	9/16	1 1/8
DAC-500F	1/2-20	1 1/4	2	1/2	3/4	5/8	9/16	1 1/8
DAC-625F	5/8-16	1 1/4	2	1/2	3/4	5/8	1/2	1 1/8
DAC-750F	3/4-16	1 3/4	2 5/16	5/16	1 1/8	31/32	7/8	1 1/2
DAC-875F	7/8-14	1 3/4	2 5/16	5/16	1 1/8	31/32	7/8	1 1/2
DAC-1000F	1-14	2 1/2	2 15/16	1/2	1 5/8	1 3/8	1 1/4	2 1/4
DAC-1250F	1 1/4-12	2 1/2	2 15/16	1/2	1 5/8	1 3/8	1 1/4	2 1/4
DAC-1375F	1 3/8-12	2 1/2	2 15/16	1/2	1 5/8	1 3/8	1 1/4	2 1/4
DAC-1500F	1 1/2-12	3 1/4	4 3/8	1 3/16	2 1/4	1 3/4	1 1/2	3
DAC-1750F	1 3/4-12	3 1/4	4 3/8	1 3/16	2 1/4	1 3/4	1 1/2	3
DAC-1875F	1 7/8-12	3 1/4	5 7/16	1 1/16	3	2 1/4	1 7/8	3 1/2
DAC-2000F	2-12	3 1/4	5 7/16	1 1/16	3	2 1/4	1 7/8	3 1/2

