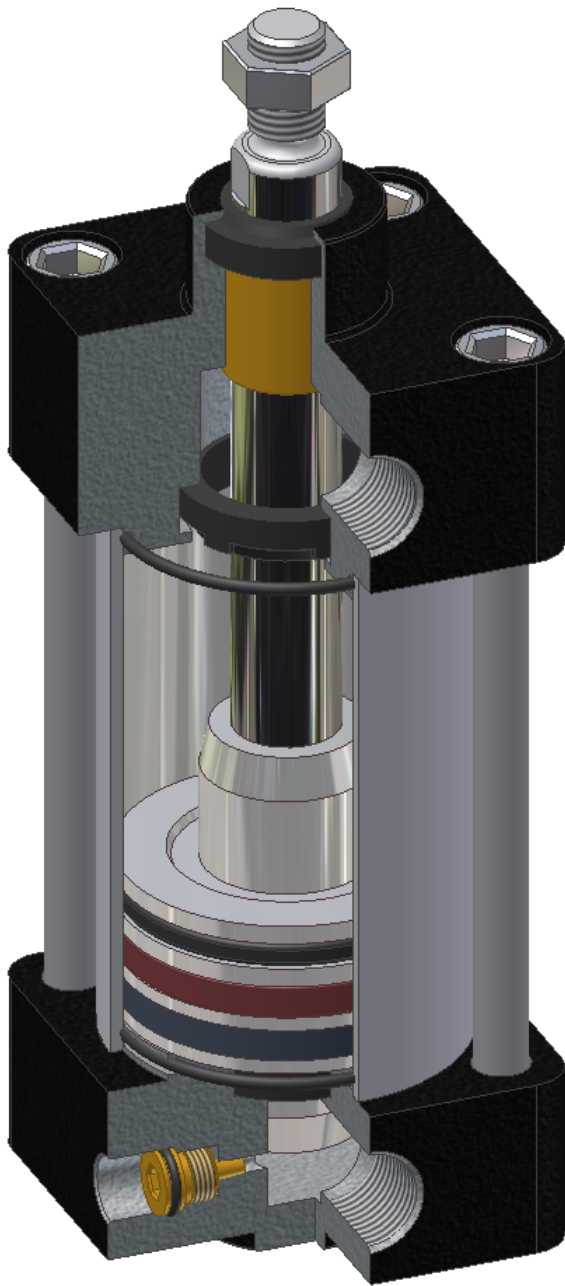


# SCE

SERIES



## NFPA ALUMINUM AIR CYLINDER

Manufactured for various types of applications in automation.

The **SCE** series is manufactured to NFPA specifications. Comes with various mounting options and thread options to suit your application.

Mounting accessories also available separate from cylinder. Easy mounting

Bore sizes ranging from 1.5" up to 4", cushions, magnet and MS4 mount come standard

All cylinders are factory tested before delivery

Special cylinders can be manufactured to any customer specifications. If volume permits SNS can provide a sample cylinder free of charge for customer to put in use.

Please contact factory for information regarding special design cylinders.



**SCE SERIES TABLE OF CONTENTS. Pages: A-1 to A-14**

SCE SERIES:	CYLINDER CONSTRUCTION	PG. A-2
SCE SERIES:	HOW TO ORDER	PG. A-3
SCE SERIES:	FIG 3 SPECIAL OPTIONS	PG. A-4

CODE:	MOUNT:	DESCRIPTION:	
T & F	MS4	Side Tapped	PG. A-5
CB	MS1	Side End Angles	PG. A-5
J	MF1	Front Flange	PG. A-5
TD	MX1	Extended Tie Rods	PG. A-6
TC	MX2	Extended Tie Rods Cap	PG. A-6
TB	MX3	Extended Tie Rods Head	PG. A-6
BD	MP4	Single Rear Clevis	PG. A-6
BB	MP1	Fixed Double Rear Clevis	PG. A-6
H	MF2	Rear Flange	PG. A-7
BC	MP2	Double Rear Clevis	PG. A-7
D	MT1	Head Trunnion	PG. A-7
DB	MT2	Rear Trunnion	PG. A-8
DD	MT4	Center Trunnion	PG. A-8
C	MS2	Side Lugs	PG. A-8

SCE SERIES:	DUAL ROD DIMENSIONS	PG. A-9
SCE SERIES:	STYLE "4" ROD END	PG. A-9
SCE SERIES:	STYLE "5" ROD END	PG. A-9
SCE SERIES:	STYLE "8" ROD END	PG. A-9
SCE SERIES:	STYLE "9" ROD END	PG. A-9

SCE SERIES:	X5 ROD LOCK OPTION AND DIMENSIONS	PG. A-10
-------------	-----------------------------------	----------

CLEVIS BRACKET	PG. A-11
EYE BRACKET	PG. A-11
MP1 CLEVIS BRACKET	PG. A-11
MP2 CLEVIS BRACKET	PG. A-12
MP4 CLEVIS BRACKET	PG. A-12
MF1/MF2 FLANGE	PG. A-12
PIN OPTIONS	PG. A-12
ROD CLEVIS OPTIONS	PG. A-13
ROD EYE OPTIONS	PG. A-13
ALIGNMENT COUPLERS	PG. A-13

SCE SERIES:	SENSOR SWITCHES	PG. A-14
-------------	-----------------	----------

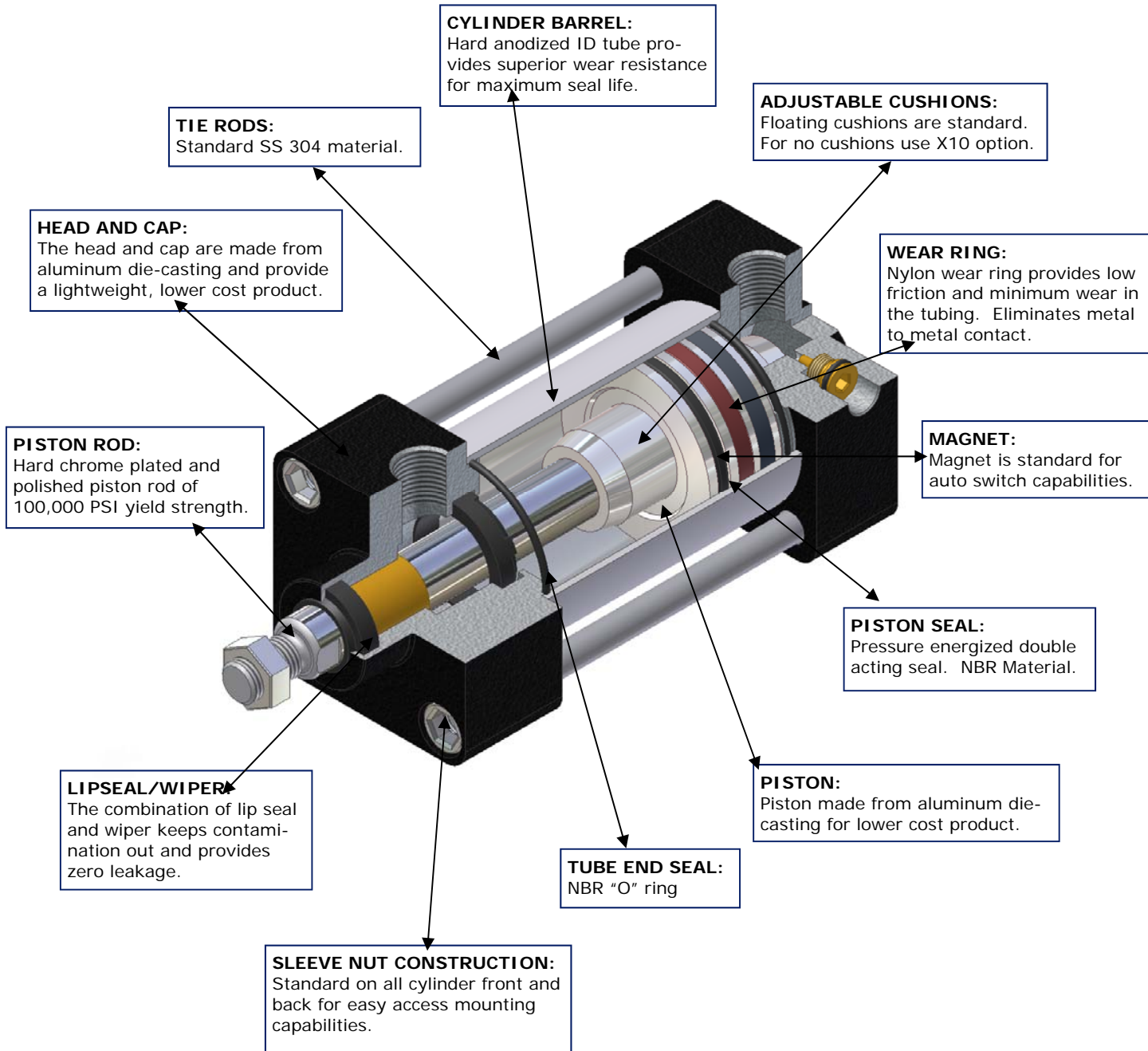




# SCE SERIES CYLINDER

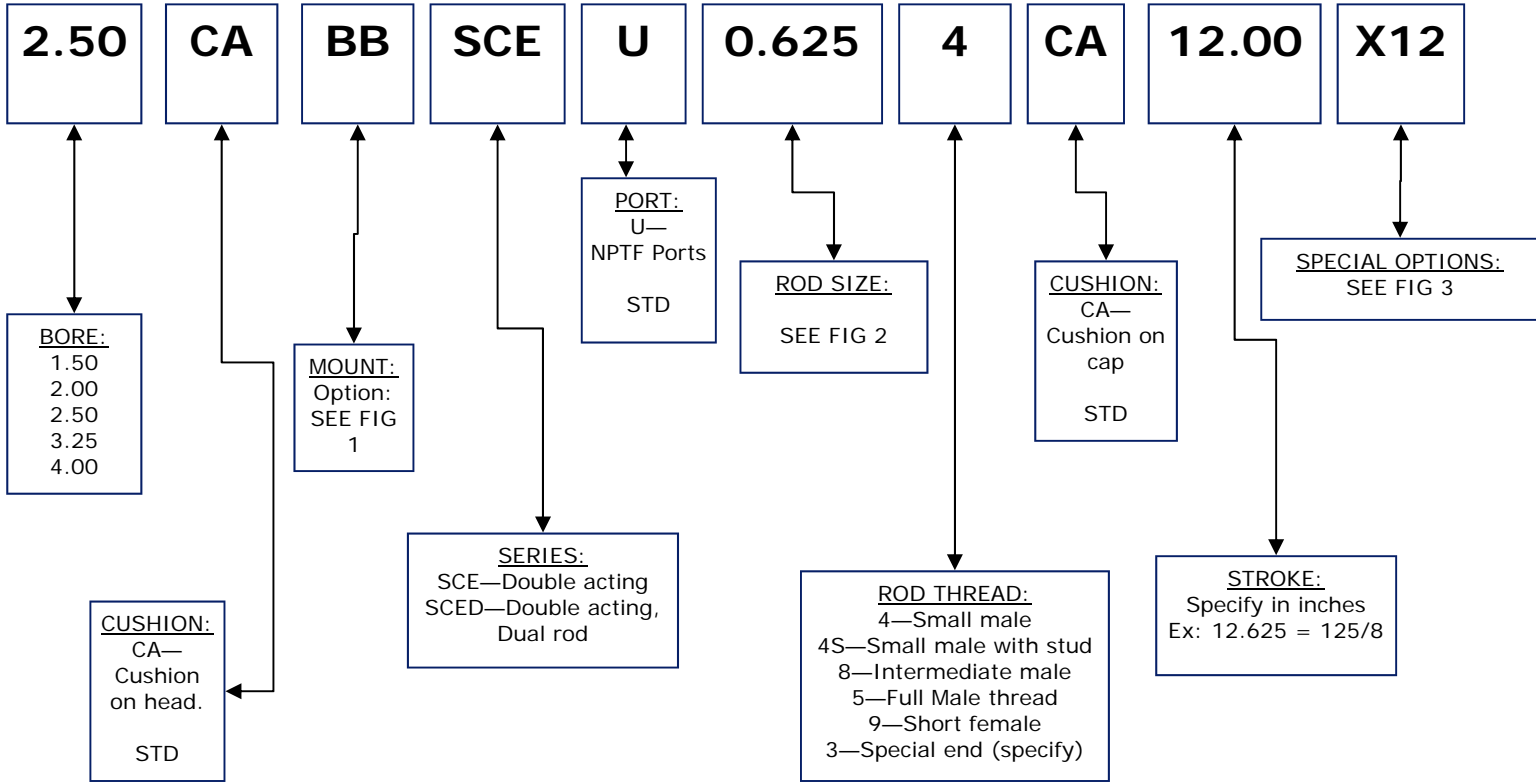
ALUMINUM PNEUMATIC : 1.5" BORE UPTO 4" BORE

NFPA INTERCHANGEABLE





**HOW TO ORDER: SCE SERIES**  
 MAGNET, CUSHIONS AND MS4 MOUNT STANDARD



**FIG 1**  
MOUNTING OPTIONS:

Mount	Code
MX1	TD
MX2	TC
MX3	TB
MS1	CB
MS2	C
MS4	F (STD)
MP1	BB
MP2	BC
MP4	BD
MT1	D
MT2	DB
MT4	DD
MF1	J
MF2	H

**FIG 2**  
ROD SIZES:

Bore	Available rod option
1.50	0.625 (STD)
2.00	0.625 (STD)
	1.00 (O/S)
2.50	0.625 (STD)
	1.00 (O/S)
3.25	1.00 (STD)
	1.375 (O/S)
4.00	1.00 (STD)
	1.375 (O/S)
	1.75 (O/S)

**FIG 3** →





FIG 3

## SPECIAL CYLINDER OPTIONS: X OPTIONS

The following list is the complete set of cylinder options and extras. All options do not apply to all cylinders. Each option that applies to the series of cylinder will be designated with \*\* to show that it applies to that series. All other options without this designation do not apply to that cylinder and cannot be ordered with that series.

### CYLINDER SERIES: SCE

#### ROD EXTENSIONS and STOP TUBE:

X43—Extension on rod thread (ex: X43-2.00) Specifies 2" thread extension\*\*  
X44—Extension on rod plain (ex: X44-2.00) Specifies 2" rod plain extension\*\*

X14—Stop Tube (ex: X14-6.00) Specifies 6" stop tube. When specifying stop tube\*\* length, add length of stop tube to NET stroke of cylinder. (ex: 5" net stroke + 2" stop Tube = 7" complete stroke on cylinder)

Ex cylinder model number: 1.50TSH1.00-4-7.00-X14-2.00. Net stroke is 5" and stop Tube is 2".

#### SEAL/CUSHION OPTIONS:

X1—Cast Iron rings (Piston)  
X2—Viton seals (for high temperature)\*\*  
X4—Low temperature seals (-65F)\*\*  
X30—Metallic Rod wiper  
X10—No Cushions\*\*  
X38—No Cushion on Cap only\*\*  
X39—No Cushion on Head only\*\*

#### ACCESSORY OPTIONS:

X5—Cylinder rod lock\*\*  
X8—Nylon Rod Boot\*\*  
X9—Neoprene Rod Boot\*\*  
X23—Lifting Eye attached to cylinder Cap

#### ROD OPTIONS:

X3—Stainless Steel Piston Rod\*\*  
X8—Nylon Rod Boot\*\*  
X9—Neoprene Rod Boot\*\*  
X11—Nitrated Piston Rod\*\*  
X31—17-4PH Piston Rod\*\*

#### CYLINDER FUNCTION OPTIONS:

X25—Spring Return\*\*  
X26—Spring Extend\*\*  
X40—High load Piston

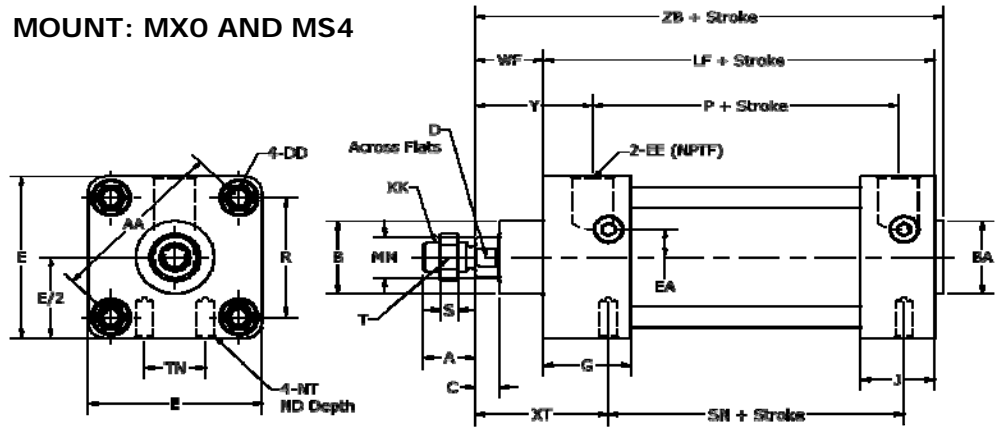
#### PORT/CUSHION OPTIONS:

X21—Bleeder port on Cap. Choose position. Ex: X21-P2 = Bleeder port on Pos 2  
X22—Bleeder port on Head. Choose position. Ex: X22-P3 = Bleeder port on Pos 3.  
X28—Undersize port on Cap. Specify port size. Ex: X28-SAE6  
X29—Undersize port on Head. Specify port size. Ex: X29-SAE6  
X33—Oversize port on Cap. Specify port size. Ex: X33-1"NPT  
X34—Oversize port on Head. Specify port size. Ex: X34-1"NPT  
X35—Cushion location change on Cap. Choose position. Ex: X35-P2 = Cushion on Pos 2.  
X36—Cushion location change on Head. Choose position. Ex: X36-P1 = Cushion on Pos 1.  
X41—Port location change on Cap. Choose position. Ex: X41-P3 = Port on Pos 3.  
X42—Port location change on Head. Choose position. Ex: X42-P4 = Port on Pos 4.





**MOUNT: MX0 AND MS4**

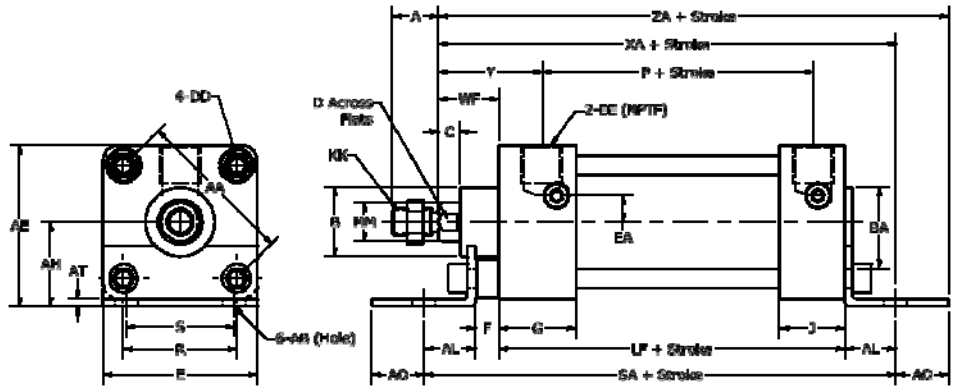


\* = ADD STROKE

BORE	MM	KK	A	AA	B	BA	C	D	DD	E	EA	EE	G	J	R	WF	Y	LF*	P*	ZB*
1.50	5/8	7/16-20	3/4	2.02	1 1/8	1 1/8	3/8	9/16	1/4-28	2	0.3	3/8	1.26	1.01	1.43	1	1.71	3 5/8	2.36	4 3/4
2.00	5/8	7/16-20	3/4	2.60	1 1/8	1 1/8	3/8	9/16	5/16-24	2 1/2	0.3	3/8	1.26	1.06	1.84	1	1.71	3 5/8	2.40	4 3/4
2.50	5/8	7/16-20	3/4	3.10	1 1/8	1 1/8	3/8	9/16	5/16-24	3	0	3/8	1.30	1.06	2.19	1	1.75	3 3/4	2.48	4 7/8
3.25	1	3/4-16	1 1/8	3.90	1 1/2	1 1/2	1/2	7/8	3/8-24	3 3/4	0	1/2	1.57	1.18	2.76	1 3/8	2.34	4 1/4	2.72	5 53/64
4.00	1	3/4-16	1 1/8	4.70	1 1/2	1 1/2	1/2	7/8	3/8-24	4 1/2	0	1/2	1.57	1.18	3.32	1 3/8	2.34	4 1/4	2.72	5 53/64

BORE	AB	AE	AH	AL	AO
1.50	3/8	2 3/16	1 3/16	1	7/16
2.00	3/8	2 11/16	1 7/16	1	9/16
2.50	3/8	3 1/8	1 5/8	1	9/16
3.25	1/2	3 13/16	1 15/16	1 1/4	3/4
4.00	1/2	4 1/2	2 1/4	1 1/4	3/4

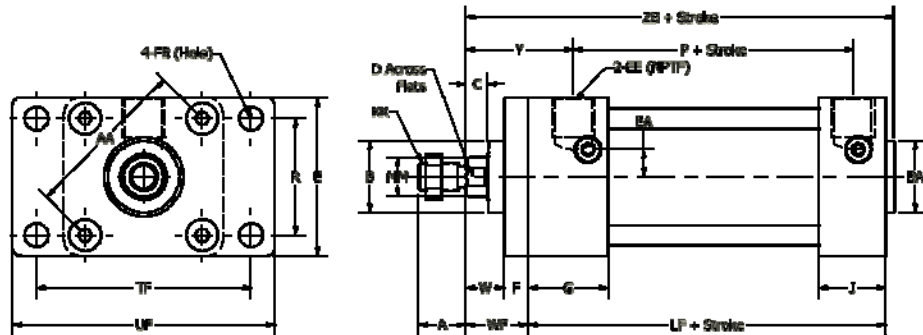
**MOUNT: MS1 (+ MX0)**



AT	S	SA*	XA*	ZA*
1/8	1 1/4	6	5 5/8	6 1/16
1/8	1 3/4	6	5 5/8	6 3/16
1/8	2 1/4	6 1/8	5 3/4	6 5/16
1 1/64	2 3/4	7 3/8	6 7/8	7 5/8
1 5/64	3 1/2	7 3/8	6 7/8	7 5/8

**MOUNT: MF1 (+MX0)**

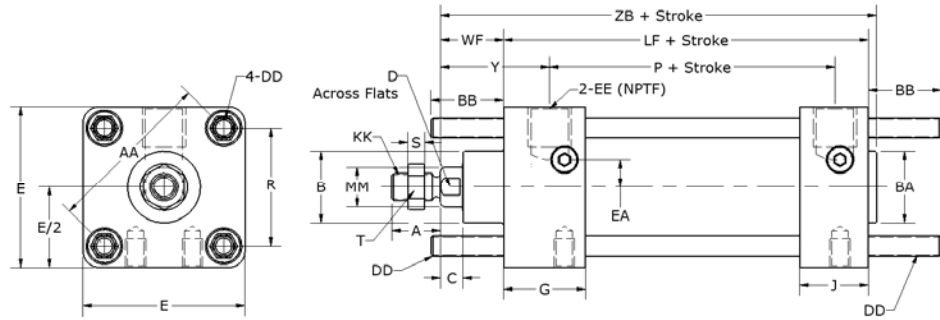
BORE	F	FB	TF	UF	W
1.50	3/8	5/16	2 3/4	3 3/8	5/8
2.00	3/8	3/8	3 3/8	4 1/8	5/8
2.50	3/8	3/8	3 7/8	4 5/8	5/8
3.25	1/2	7/16	4 11/16	5 1/2	3/4
4.00	1/2	7/16	5 7/16	6 1/4	3/4





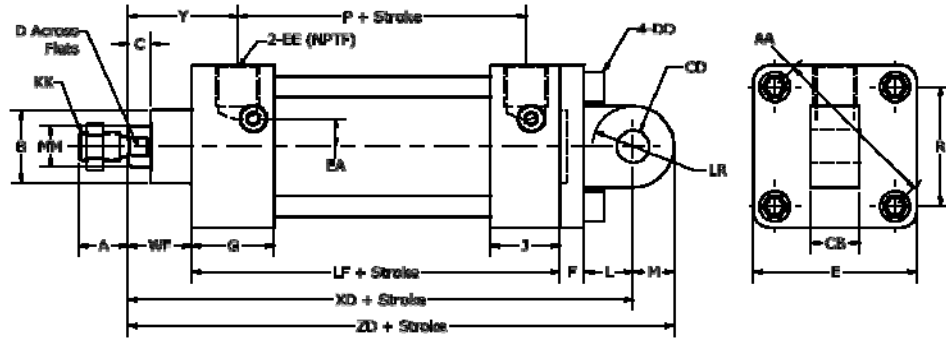
**MOUNT: MX1,MX2,MX3 (+ MX0)**

BORE	BB	DD
1.50	1	1/4-28
2.00	1 1/8	5/16-24
2.50	1 1/8	5/16-24
3.25	1 3/8	3/8-24
4.00	1 3/8	3/8-24



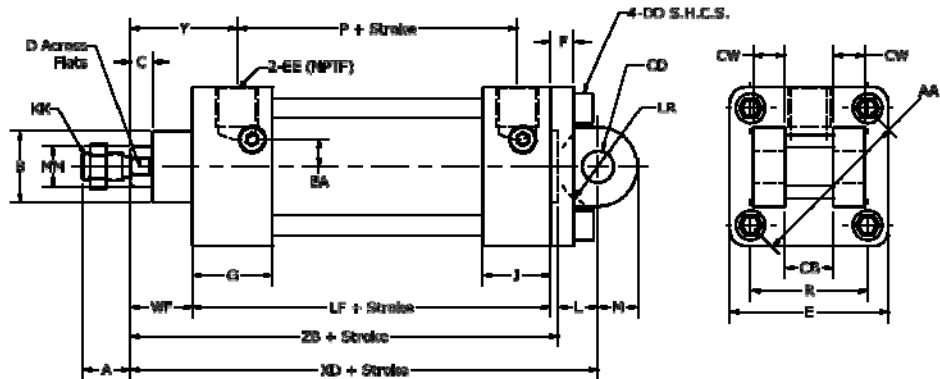
**MOUNT: MP4 (+ MX0)**

BORE	CB	CD	L	LR*	M	XD*	ZD*
1.50	3/4	1/2	3/4	5/8	1/2	5 3/4	6 1/4
2.00	3/4	1/2	3/4	5/8	1/2	5 3/4	6 1/4
2.50	3/4	1/2	3/4	5/8	1/2	5 7/8	6 3/8
3.25	1 1/4	3/4	1 1/4	1	3/4	7 1/2	8 1/4
4.00	1 1/4	3/4	1 1/4	1	3/4	7 1/2	8 1/4



**MOUNT: MP1 (+MX0)**

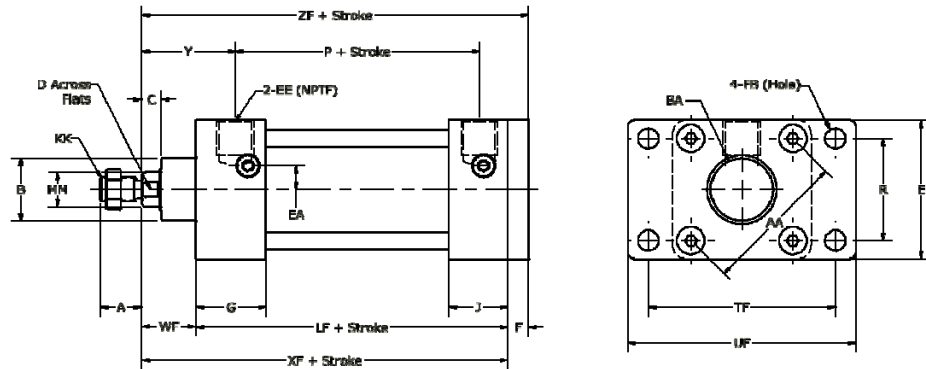
BORE	CB	CD	CW	LR	M	XD*
1.50	3/4	1/2	1/2	0.75	0.62	5 3/8
2.00	3/4	1/2	1/2	0.75	0.62	5 3/8
2.50	3/4	1/2	1/2	0.75	0.62	5 1/2
3.25	1 1/4	3/4	5/8	1.25	0.87	6 7/8
4.00	1 1/4	3/4	5/8	1.25	0.87	6 7/8





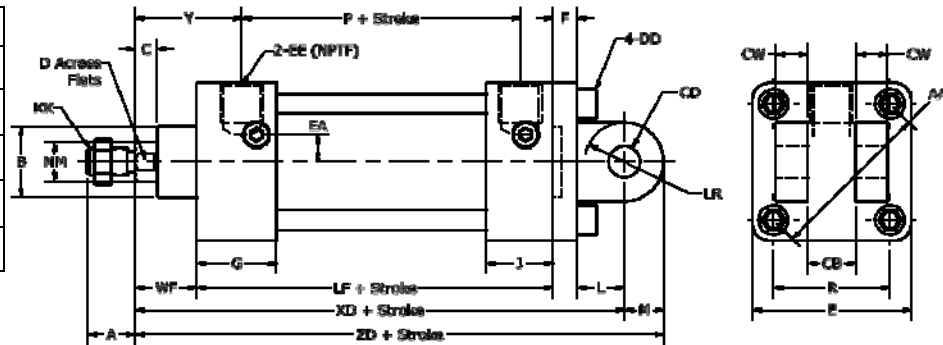
**MOUNT: MF2 (+ MXO)**

BORE	F	FB	TF	UF	W	XF*	ZF*
1.50	3/8	5/16	2 3/4	3 3/8	5/8	4 5/8	5
2.00	3/8	3/8	3 3/8	4 1/8	5/8	4 5/8	5
2.50	3/8	3/8	3 7/8	4 5/8	5/8	4 3/4	5 1/8
3.25	1/2	7/16	4 11/16	5 1/2	3/4	5 5/8	6 1/4
4.00	1/2	7/16	5 7/16	6 1/4	3/4	5 5/8	6 1/4



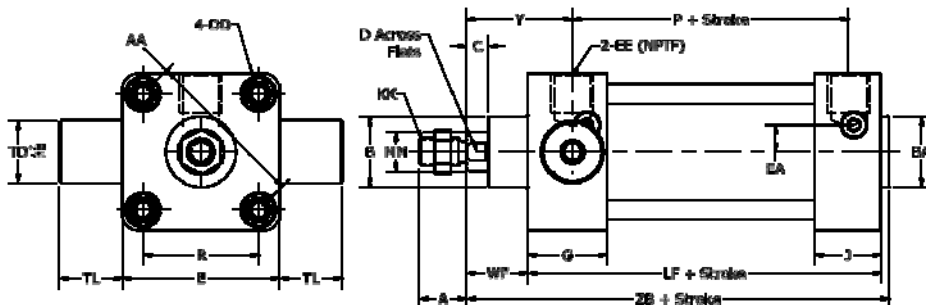
**MOUNT: MP2 (+ MXO)**

BORE	CB	CD	CW	L	LR	M	XD	ZD
1.50	3/4	1/2	1/2	3/4	5/8	1/2	5 3/4	6 1/4
2.00	3/4	1/2	1/2	3/4	5/8	1/2	5 3/4	6 1/4
2.50	3/4	1/2	1/2	3/4	5/8	1/2	5 7/8	6 3/8
3.25	1 1/4	3/4	5/8	1 1/4	1	3/4	7 1/2	8 1/4
4.00	1 1/4	3/4	5/8	1 1/4	1	3/4	7 1/2	8 1/4



**MOUNT: MT1 (+ MXO)**

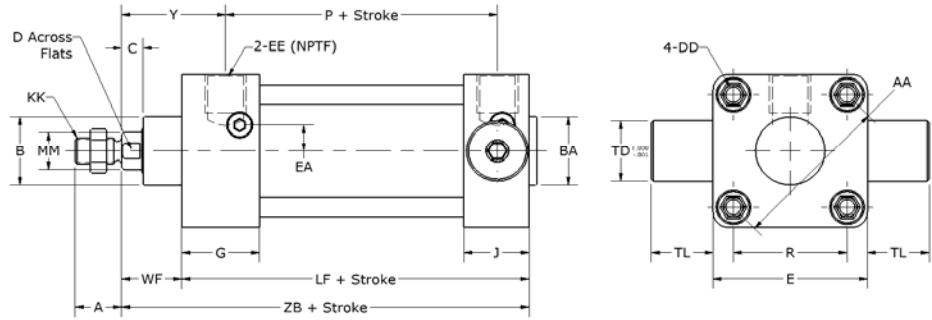
BORE	TD	TL
1.50	1	1
2.00	1	1
2.50	1	1
3.25	1	1
4.00	1	1





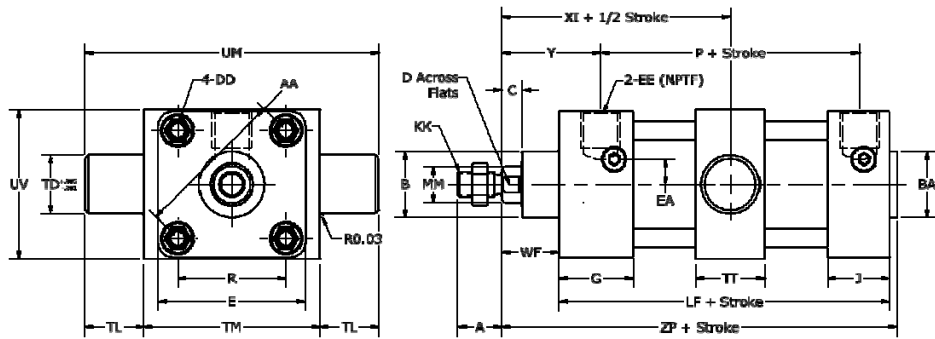
**MOUNT: MT2 (+ MX0)**

BORE	TD	TL
1.50	1	1
2.00	1	1
2.50	1	1
3.25	1	1
4.00	1	1



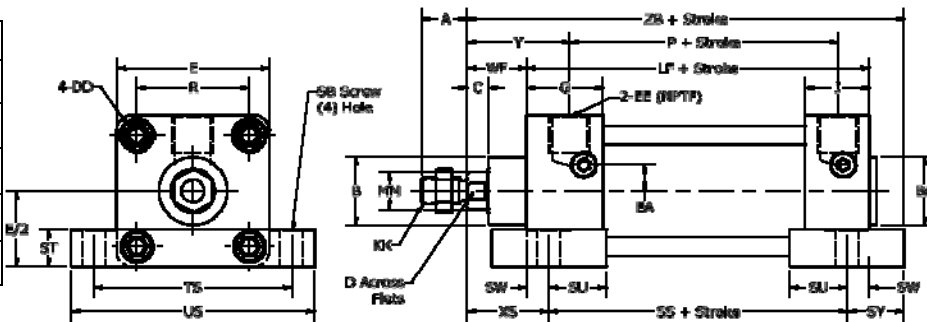
**MOUNT: MT4 (+ MX0)**

BORE	TD	TL	TM	TT	UM	UV	XI
1.50	1	1	2 1/2	1.18	4 1/2	2	2.89
2.00	1	1	3	1.18	5	2.56	2.91
2.50	1	1	3 1/2	1.18	5 1/2	3.39	2.99
3.25	1	1	4 1/2	1.34	6 1/2	4.33	3.70
4.00	1	1	5 1/4	1.57	7 1/2	5.12	3.74



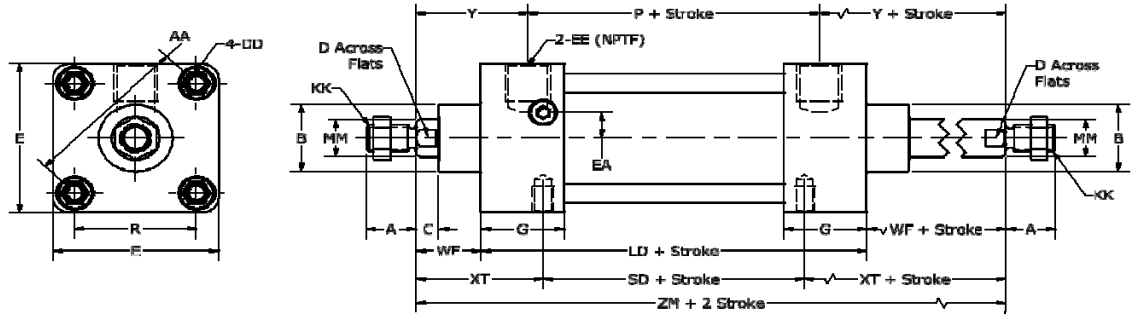
**MOUNT: MS2 (+ MX0)**

BORE	SB	SS*	ST	SU	SW	SY	TS	US	XS
1.50	3/8	2.88	5/8	0.94	3/8	0.94	2.75	3.50	1.38
2.00	3/8	2.88	5/8	0.94	3/8	0.94	3.25	4.00	1.38
2.50	3/8	3	3/4	0.94	3/8	0.94	3.75	4.50	1.38
3.25	1/2	3.25	1	1.25	1/2	1.25	4.75	5.75	1.88
4.00	1/2	3.25	1	1.25	1/2	1.25	5.50	6.50	1.88



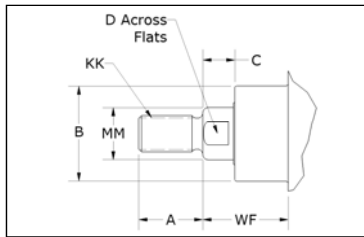


**MOUNT: DUAL ROD (MX0)**

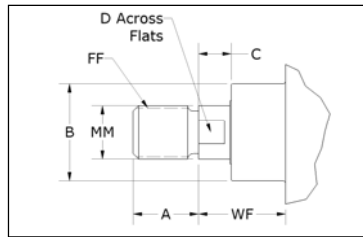


\* = ADD STROKE

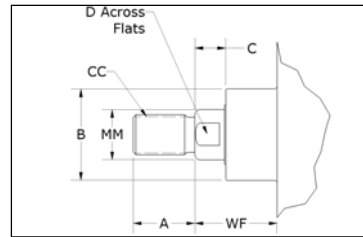
BORE	MM	KK	A	AA	B	C	D	DD	E	EA	EE	G	K	R	LD*	WF*	Y*	ZM*	P*	SD*
1.50	5/8	7/16-20	3/4	2.02	1 1/8	3/8	9/16	1/4-28	2	0.3	3/8	1.26	0.281	1.43	3.78	1	1.71	5.78	2.36	1.9
2.00	5/8	7/16-20	3/4	2.60	1 1/8	3/8	9/16	5/16-24	2 1/2	0.3	3/8	1.26	0.343	1.84	3.82	1	1.71	5.82	2.40	1.94
2.50	5/8	7/16-20	3/4	3.10	1 1/8	3/8	9/16	5/16-24	3	0	3/8	1.30	0.343	2.19	3.98	1	1.75	5.98	2.48	2.1
3.25	1	3/4-16	1 1/8	3.90	1 1/2	1/2	7/8	3/8-24	3 3/4	0	1/2	1.57	0.421	2.76	4.64	1 3/8	2.34	7.4	2.72	2.52
4.00	1	3/4-16	1 1/8	4.70	1 1/2	1/2	7/8	3/8-24	4 1/2	0	1/2	1.57	0.421	3.32	4.64	1 3/8	2.34	7.4	2.72	2.52



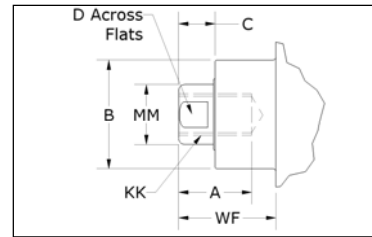
STYLE "4" SMALL MALE



STYLE "5" FULL MALE



STYLE "8" INTERMEDIATE MALE



STYLE "9" FEMALE

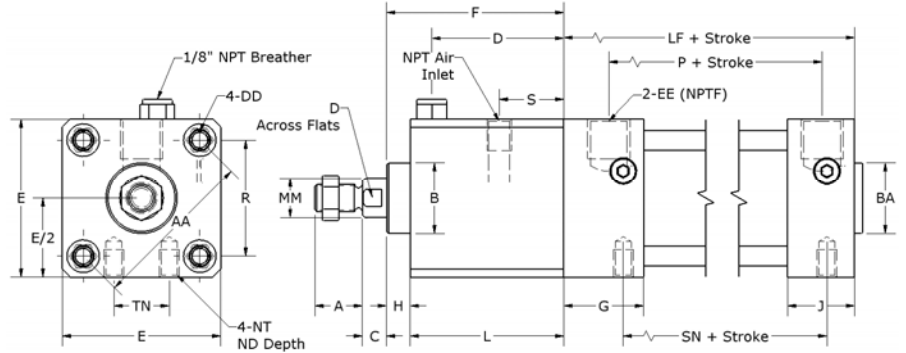
**DIMENSIONS AFFECTED BY STANDARD AND OVERSIZE RODS**

BORE	MM	KK	FF	CC	A	B	C	D	WF
1.50	5/8	7/16-20	5/8-18	1/2-20	3/4	1 1/8	3/8	9/16	1
2.00	5/8	7/16-20	5/8-18	1/2-20	3/4	1 1/8	3/8	9/16	1
	1	3/4-16	1-14	7/8-14	1 1/8	1 1/2	1/2	7/8	1 3/8
2.50	5/8	7/16-20	5/8-18	1/2-20	3/4	1 1/8	3/8	9/16	1
	1	3/4-16	1-14	7/8-14	1 1/8	1 1/2	1/2	7/8	1 3/8
3.25	1	3/4-16	1-14	7/8-14	1 1/8	1 1/2	1/2	7/8	1 3/8
	1 3/8	1-14	1 3/8-12	1 1/4-12	1 5/8	2	5/8	1 1/8	1 5/8
4.00	1	3/4-16	1-14	7/8-14	1 1/8	1 1/2	1/2	7/8	1 3/8
	1 3/8	1-14	1 3/8-12	1 1/4-12	1 5/8	2	5/8	1 1/8	1 5/8



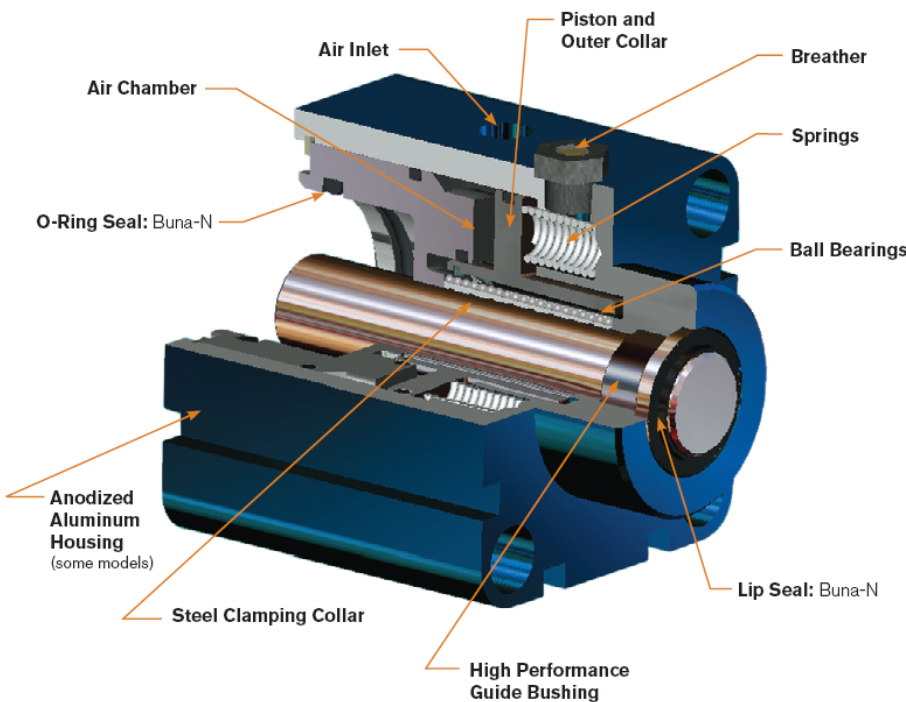


## X5 OPTION: NFPA ROD LOCK. 1.5" BORE TO 4" BORE



BORE	MM	D (rod lock)	L	F	H	B	S
1.50	5/8	1.95	2.337	2.77	0.375	1.125	0.91
2.00	5/8	2.08	2.422	2.80	0.375	1.125	1.02
2.50	5/8	2.13	2.540	2.91	0.375	1.125	1.02
3.25	1	2.99	3.976	4.48	0.500	1.500	1.56
4.00	1	2.99	3.976	4.48	0.500	1.500	1.56

### ROD LOCK CUTAWAY (W/O MANUAL RELEASE)



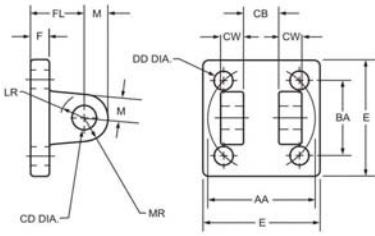
### FEATURES AND BENEFITS:

- FAST RESPONSE TIMES
- PROFILE MATCHES CYLINDER
- No rod displacement on engagement
- Large clamping force
- IP67 rated (exceeds NEMA 4X)
- Extremely low backlash
- Spring engaged units
- Rated for 2,750,000 cycles
- 60PSI release pressure
- HIGH CYCLE RATES
- COMPACT UNIT, EASY INTEGRATION
- Maintains accurate position
- Consistent clamping force
- Suitable for wash down areas
- Precision holding
- Holds load during power/pressure loss
- Long maintenance free life
- Broad applications



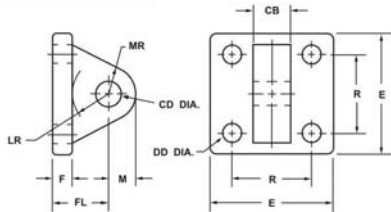


# SCE MOUNTING ACCESSORIES



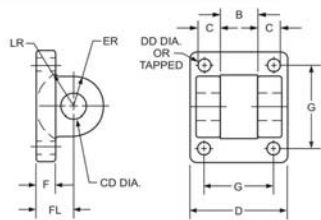
CLEVIS BRACKETS

PT#	AA	BA	CB	CD	CW	DD	E	F	FL	LR	M	MR
DCB-05	2.3	1 5/8	0.765	1/2	1/2	3/8-24	2 1/2	3/8	1 1/8	1/2	1/2	9/16
DCB-06	2.9	2 1/16	1.265	3/4	5/8	1/2-20	3	5/8	1 7/8	1	3/4	1 1/16
DCB-07	3.6	2 9/16	1.265	3/4	5/8	1/2-20	3 1/2	5/8	1 7/8	1 1/16	3/4	1 1/16
DCB-10	4.6	3 1/4	1.515	1	3/4	5/8-18	4 1/2	3/4	2 1/4	1 1/4	1	1 1/8
DCB-13	5.4	3 13/16	2.032	1 3/8	1	5/8-18	5	7/8	3	1 7/8	1 3/8	1 3/4
DCB-17	7.0	4 15/16	2.531	1 3/4	1 1/4	7/8-14	6 1/2	7/8	3 1/8	2	1 3/4	1 7/8
DCB-20	8.1	5 3/4	2.531	2	1 1/4	1-14	7 1/2	1	3 1/2	2 1/8	2	2 1/8
DCB-25	9.3	6 19/32	3.032	2 1/2	1 1/2	1 1/8-12	8 1/2	1	4	2 5/8	2 1/2	2 1/2
DCB-30	10.6	7 1/2	3.032	3	1 1/2	1 1/4-12	9 1/2	1	4 1/4	2 7/8	2 3/4	2 3/4
DCB-35	13.6	9 5/8	4.032	3 1/2	2	1 3/4-12	12 5/8	1 11/16	5 11/16	3 5/8	3 1/2	3 1/2
DCB-40	16.2	11 1/2	4.032	4	2 1/4	2-12	14 7/8	1 15/16	6 7/16	4	4	4



EYE BRACKET

PT#	CB	CD	DD	E	F	FL	LR	M	MR	R
DEB-05	3/4	1/2	13/32	2 1/2	3/8	1 1/8	3/4	1/2	9/16	1.63
DEB-07	1 1/4	3/4	17/32	3 1/2	5/8	1 7/8	1 1/4	3/4	7/8	2.56
DEB-10	1 1/2	1	21/32	4 1/2	3/4	2 1/4	1 1/2	1	1 1/4	3.25
DEB-10H	1 1/2	1	21/32	5	7/8	2 3/8	1 1/2	1	1 1/4	3.25
DEB-13	2	1 3/8	21/32	5	7/8	3	2 1/8	1 3/8	1 5/8	3.81
DEB-17	2 1/2	1 3/4	29/32	6 1/2	7/8	3 1/8	2 1/4	1 3/4	2 1/8	4.95
DEB-17H	2 1/2	1 3/4	29/32	6 1/2	1 1/8	3 3/8	2 1/4	1 3/4	2 1/8	4.95
DEB-20	2 1/2	2	1 1/16	7 1/2	1	3 1/2	2 1/2	2	2 7/16	5.75
DEB-20H	2 1/2	2	1 1/16	7 1/2	1 1/2	4	2 1/2	2	2 7/16	5.75
DEB-25	3	2 1/2	1 3/16	8 1/2	1	4	3	2 1/2	3	6.59
DEB-25H	3	2 1/2	1 3/16	8 1/2	1 3/4	4 3/4	3	2 1/2	3	6.59
DEB-30	3	3	1 5/16	9 1/2	1	4 1/4	3 1/4	3	3 1/4	7.50
DEB-30H	3	3	1 5/16	9 1/2	2	5 1/4	3 1/4	3	3 1/4	7.50
DEB-35	4	3 1/2	1 13/16	12 5/8	1 11/16	5 11/16	4	3 1/2	4 1/8	9.62
DEB-40	4 1/2	4	2 1/16	14 7/8	1 15/16	6 7/16	4 1/2	4	5 1/4	11.50



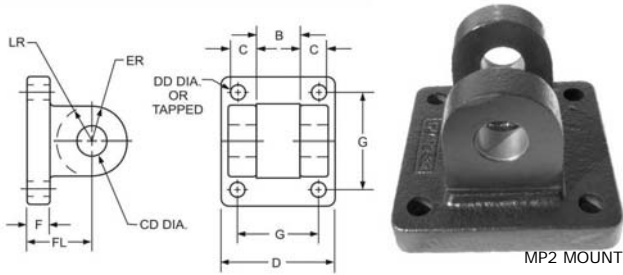
MP1 MOUNT

PT#	CD	FL	F	B	C	D	ER	G	LR	TAPPED	DD
DMP1-15	.502	.75	.38	.76	.50	2.00	.62	1.43	.62	1/4-28	.28
DMP1-2	.502	.75	.38	.76	.50	2.50	.62	1.84	.62	5/16-24	.34
DMP1-25	.502	.75	.38	.76	.50	3.00	.62	2.19	.62	5/16-24	.34
DMP1-325	.752	1.25	.63	1.26	.62	3.75	.87	2.77	.87	3/8-24	.41
DMP1-4	.752	1.25	.63	1.26	.62	4.50	.87	3.32	.87	3/8-24	.41
DMP1-5	.752	1.25	.63	1.26	.62	5.50	.87	4.10	.87	1/2-20	.53
DMP1-6	1.002	1.50	.75	1.51	.75	6.50	1.13	4.88	1.13	1/2-20	.53

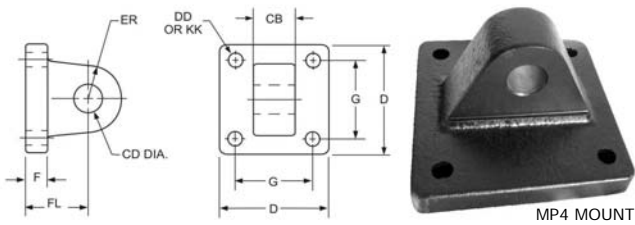




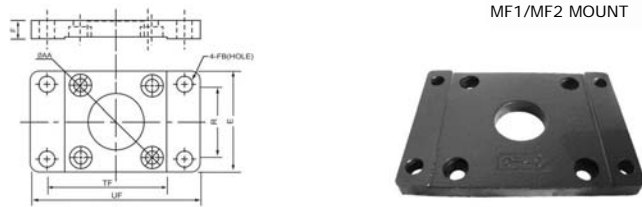
# SCE MOUNTING ACCESSORIES



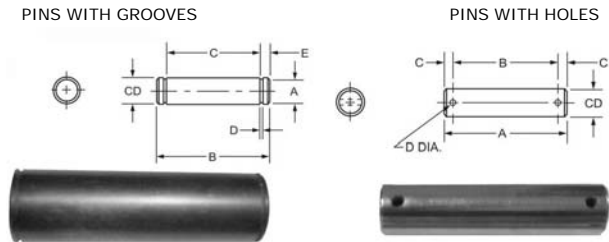
PT#	CD	FL	F	B	C	D	ER	G	TAPPED	DD
DMP2-15	.502	1.13	.38	.76	.50	2.00	.62	1.43	1/4-28	.28
DMP2-2	.502	1.13	.38	.76	.50	2.50	.62	1.84	5/16-24	.34
DMP2-25	.502	1.13	.38	.76	.50	3.00	.62	2.19	5/16-24	.34
DMP2-325	.752	1.88	.63	1.26	.62	3.75	.87	2.77	3/8-24	.41
DMP2-4	.752	1.88	.63	1.26	.62	4.50	.87	3.32	3/8-24	.41
DMP2-5	.752	1.88	.63	1.26	.62	5.50	.87	4.10	1/2-20	.53
DMP2-6	1.002	2.25	.75	1.51	.75	6.50	1.13	4.88	1/2-20	.53



PT#	CD	FL	F	CB	D	ER	G	TAPPED KK	DD
DMP4-15	.502	1.13	.38	.75	2.00	.62	1.43	1/4-28	.28
DMP4-2	.502	1.13	.38	.75	2.50	.62	1.84	5/16-24	.34
DMP4-25	.502	1.13	.38	.75	3.00	.62	2.19	5/16-24	.34
DMP4-325	.752	1.88	.63	1.25	3.75	.87	2.77	3/8-24	.41
DMP4-4	.752	1.88	.63	1.25	4.50	.87	3.32	3/8-24	.41



PT#	UF	TF	FB	E	R	F	AA	TAPPED
DF-15	3 3/8	2 3/4	5/16	2	1.43	3/8	2.02	1/4-28
DF-2	4 1/8	3 3/8	3/8	2 1/2	1.84	3/8	2.60	5/16-24
DF-25	4 5/8	3 7/8	3/8	3	2.19	3/8	3.10	5/16-24
DF-325	5 1/2	4 11/16	7/16	3 3/4	2.76	5/8	3.90	3/8-24
DF-4	6 1/4	5 7/16	7/16	4 1/2	3.32	5/8	4.70	3/8-24
DF-5	7 5/8	6 5/8	9/16	5 1/2	4.10	5/8	5.79	1/2-20
DF-6	8 5/8	7 5/8	9/16	6 1/2	4.88	3/4	6.90	1/2-20

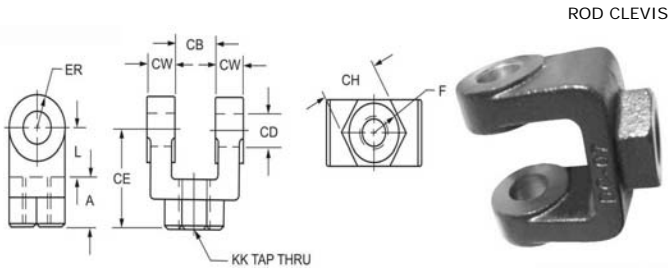


PINS WITH GROOVES							PINS WITH HOLES					
PT#	CD	A	B	C	D	E	PT#	CD	A	B	C	D
DP-05G	.50	.468	2.094	1.875	.041	.109	DP-05H	.50	2.281	1.938	.172	.106
DP-07G	.75	.704	2.875	2.625	.048	.125	DP-07H	.75	3.094	2.719	.188	.140
DP-10G	1.00	.940	3.375	3.125	.048	.125	DP-10H	1.00	3.594	3.219	.188	.140
DP-13G	1.375	1.291	4.485	4.187	.056	.149	DP-13H	1.375	4.656	4.250	.203	.173
DP-17G	1.75	1.650	5.547	5.188	.068	.180	DP-17H	1.75	5.656	5.250	.203	.173
DP-20G	2.00	1.886	5.547	5.188	.068	.180	DP-20H	2.00	5.719	5.281	.219	.204
DP-25G	2.50	2.360	6.625	6.188	.086	.219	DP-25H	2.50	6.781	6.313	.234	.219
DP-30G	3.00	2.838	6.780	6.250	.103	.265	DP-30H	3.00	6.844	6.344	.250	.250
DP-35G	3.50	3.316	8.845	8.125	.120	.360	DP-35H	3.50	8.969	8.406	.282	.312
DP-40G	4.00	3.792	9.845	9.125	.120	.360	DP-40H	4.00	9.969	9.409	.282	.312





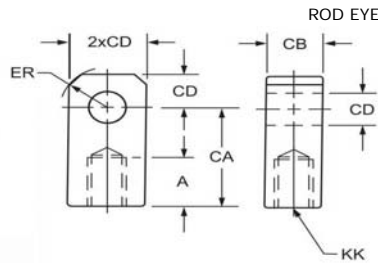
# SCE MOUNTING ACCESSORIES



ROD CLEVIS

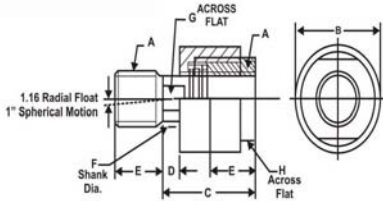


PT#	CB	CD	CE	CH	CW	F	L	A	KK	ER
DC-05	.765	1/2	1 1/2	1	1/2	1	3/4	3/4	7/16-20	1/2
DC-07	1.265	3/4	2 3/8	1 1/4	5/8	1 1/4	1 1/4	1 1/8	3/4-16	3/4
DC-07M	1.265	3/4	2 1/8	1 3/8	5/8	1 1/4	1	1 1/8	3/4-16	3/4
DC-10	1.515	1	3 1/8	1 1/2	3/4	1 1/2	1 1/2	1 5/8	1-14	1
DC-10M	1.515	1	2 15/16	1 1/2	3/4	1 5/8	1 15/16	1 5/8	1-14	1
DC-13	2.032	1 3/8	4 1/8	2	1	2	2 1/8	2	1 1/4-12	1 3/8
DC-13M	2.032	1 3/8	3 3/4	2	1	2	1 3/4	2	1 1/4-12	1 3/8
DC-17	2.531	1 3/4	4 1/2	2 3/8	1 1/4	2 3/8	2 1/4	2 1/4	1 1/2-12	1 3/4
DC-20	2.531	2	5 1/2	2 15/16	1 1/4	2 15/16	2 1/2	3	1 7/8-12	2
DC-25	3.032	2 1/2	6 1/2	3 1/2	1 1/2	3 1/2	3	3 1/2	2 1/4-12	2 1/2
DC-30	3.032	3	6 3/4	3 7/8	1 1/2	3 7/8	3 1/4	3 1/2	2 1/2-12	2 3/4
DC-30M	3.032	3	6 3/4	3 7/8	1 1/2	3 7/8	3 1/4	3 1/2	2 1/2-12	3
DC-35	4.032	3 1/2	8 1/2	5	2	5	4	4 1/2	3 1/4-12	3 1/2
DC-35M	4.032	3 1/2	7 3/4	5	2	5	4 1/4	3 1/2	3 1/4-12	3 1/2
DC-40	4.032	4	10	6 1/8	2 1/4	6 1/8	4 1/2	5 1/2	4-12	4



ROD EYE

PT#	A	CA	CB	CD	ER	KK
DE-05	3/4	1 1/2	3/4	1/2	5/8	7/16-20
DE-07	1 1/8	2 1/16	1 1/4	3/4	7/8	3/4-16
DE-10	1 5/8	2 13/16	1 1/2	1	1 3/16	1-14
DE-10M	1 1/8	2 3/8	1 1/2	1	1 7/16	7/8-14
DE-13	2	3 7/16	2 1/2	1 3/8	1 9/16	1 1/4-12
DE-17	2 1/4	4	2 1/2	1 3/4	2	1 1/2-12
DE-20	3	5	2 1/2	2	2 1/2	1 7/8-12
DE-20M	2 1/4	4 3/8	2 1/2	2	2 7/8	1 3/4-12
DE-25	3 1/2	5 13/16	3	2 1/2	2 13/16	2 1/4-12
DE-30	3 1/2	6 1/8	3	3	3 1/4	2 1/2-12
DE-30M	3 5/8	6 1/2	3 1/2	3	3 1/4	2 3/4-12
DE-35	4 1/2	7 5/8	4	3 1/2	3 7/8	3 1/4-12
DE-35M	5	7 5/8	4	3 1/2	3 7/8	3 1/2-12
DC-40	5 1/2	9 1/8	4 1/2	4	4 7/16	4-12
DE-40M	5 3/4	9 1/8	5	4	4 7/16	4 1/2-12



ALIGNMENT COUPLER



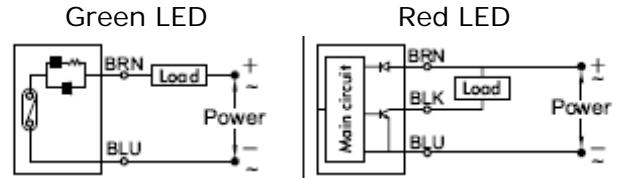
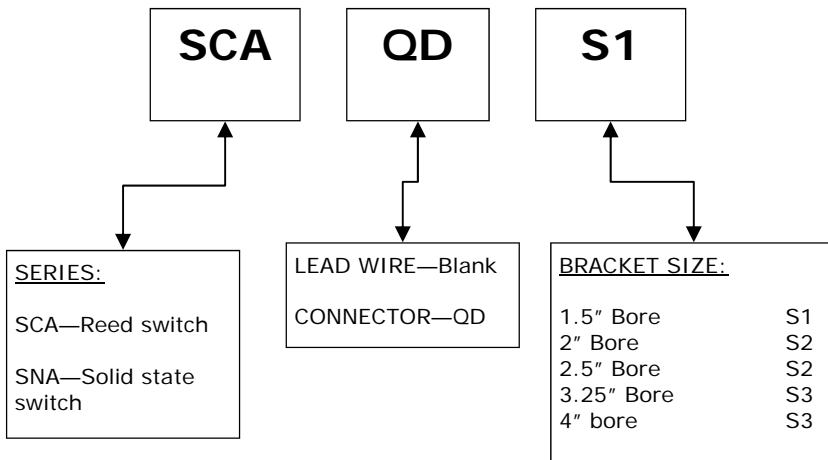
PT#	A	B	C	D	E	F	O	H
DAC-250F	1/4-28	7/8	1 1/4	1/4	5/8	.245	3/16	13/16
DAC-312F	5/16-24	7/8	1 1/4	1/4	5/8	.308	1/4	13/16
DAC-375F	3/8-24	7/8	1 1/4	1/4	5/8	.370	5/16	13/16
DAC-437F	7/16-20	1 1/4	2	1/2	3/4	5/8	9/16	1 1/8
DAC-500F	1/2-20	1 1/4	2	1/2	3/4	5/8	9/16	1 1/8
DAC-625F	5/8-16	1 1/4	2	1/2	3/4	5/8	1/2	1 1/8
DAC-750F	3/4-16	1 3/4	2 5/16	5/16	1 1/8	31/32	7/8	1 1/2
DAC-875F	7/8-14	1 3/4	2 5/16	5/16	1 1/8	31/32	7/8	1 1/2
DAC-1000F	1-14	2 1/2	2 15/16	1/2	1 5/8	1 3/8	1 1/4	2 1/4
DAC-1250F	1 1/4-12	2 1/2	2 15/16	1/2	1 5/8	1 3/8	1 1/4	2 1/4
DAC-1375F	1 3/8-12	2 1/2	2 15/16	1/2	1 5/8	1 3/8	1 1/4	2 1/4
DAC-1500F	1 1/2-12	3 1/4	4 3/8	1 3/16	2 1/4	1 3/4	1 1/2	3
DAC-1750F	1 3/4-12	3 1/4	4 3/8	1 3/16	2 1/4	1 3/4	1 1/2	3
DAC-1875F	1 7/8-12	3 1/4	5 7/16	1 1/16	3	2 1/4	1 7/8	3 1/2
DAC-2000F	2-12	3 1/4	5 7/16	1 1/16	3	2 1/4	1 7/8	3 1/2





## SCE SERIES SENSOR SWITCH AND BRACKETS

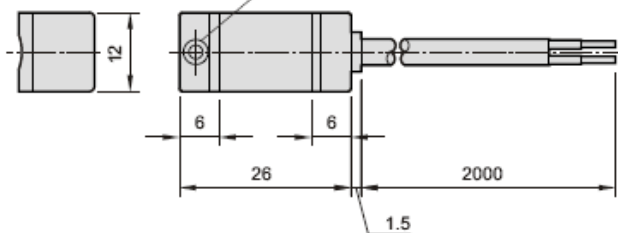
### HOW TO ORDER:



### SPECIFICATIONS:

MODEL	Switch type	Contacts	Voltage range	Current range	Voltage Drop	Response time	Temperature	Lead wire length	Classification
SCA	Reed Switch	N/O	5-240V DC/ AC	100mA max	2.5V max	Max 1ms	-10—+70C	3m	IP 67 (NEMA 6)
SNA	NPN current sinking	N/O	5-30V DC	200mA max	0.5V max	Max 1ms	-10—+70C	3m	IP 67 (NEMA 6)

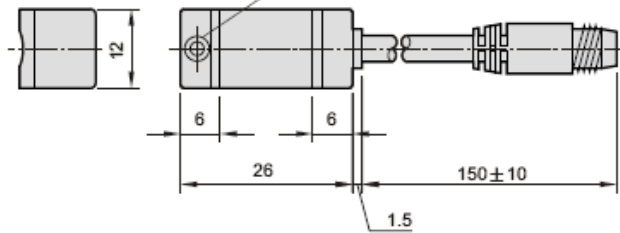
SCA and SNA dimensions



Bracket assembly



SCA-QD and SNA-QD dimensions



### Wiring of the QD:

● 2 wire QD wiring

● 3 wire QD wiring

