

SC

SERIES



NFPA ALUMINUM AIR CYLINDER LARGE BORE

Manufactured for various types of applications in automation.

The **SC** series is manufactured to NFPA specifications. Comes with various mounting options, thread options and material options to suit any environment and application.

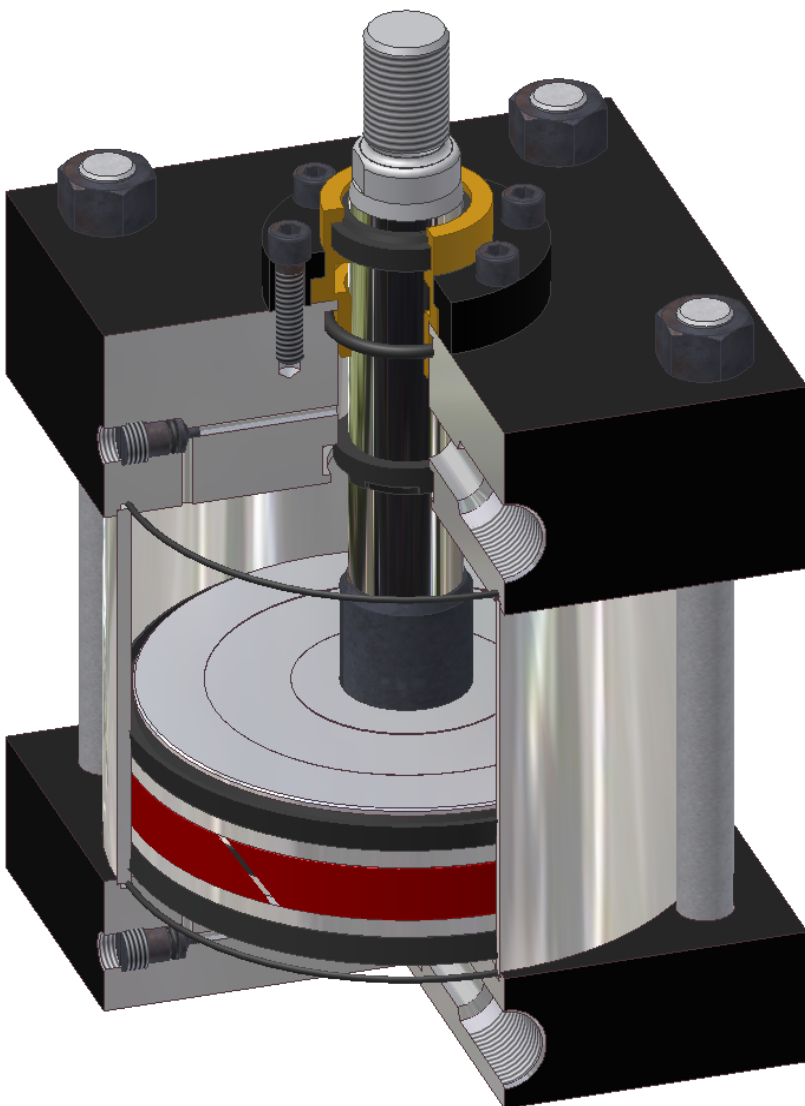
Mounting accessories also available separate from cylinder

Bore sizes ranging from 5" up to 8", cushions and magnet available

All cylinders are factory tested before delivery

Special cylinders can be manufactured to any customer specifications. If volume permits SNS can provide a sample cylinder free of charge for customer to put in use.

Please contact factory for information regarding special design cylinders.





SC SERIES TABLE OF CONTENTS. Pages: B-1 to B-16

SC SERIES:	CYLINDER CONSTRUCTION	PG. A-2
SC SERIES:	HOW TO ORDER	PG. A-3
SC SERIES:	FIG 3 SPECIAL OPTIONS	PG. A-4
CODE:	MOUNT:	DESCRIPTION:
T	MX0	Basic Mount PG. B-5
BB	MP1	Fixed Double Clevis PG. B-6
BC	MP2	Double Rear Clevis PG. B-6
BD	MP4	Single Rear Clevis PG. B-6
JE	ME3	Head Square Flange PG. B-7
JH	ME4	Cap Square Flange PG. B-7
TD	MX1	Extended Tie Rods PG. B-7
TC	MX2	Extended Tie Rods Head PG. B-7
TB	MX3	Extended Tie Rods Cap PG. B-7
BE	MP3	Fixed Single Rear Clevis PG. B-8
CB	MS1	Foot Mounts PG. B-8
C	MS2	Side Lug Mount PG. B-8
F	MS4	Side Tapped PG. B-9
J	MF1	Front Flange PG. B-9
H	MF2	Rear Flange PG. B-9
D	MT1	Head Trunnion PG. B-10
DB	MT2	Rear Trunnion PG. B-10
DD	MT4	Center Trunnion PG. B-10
JB	MF5	Head Flange PG. B-11
HB	MF6	Cap Flange PG. B-11
SC SERIES:	STYLE "4" ROD END	PG. B-5
SC SERIES:	STYLE "5" ROD END	PG. B-5
SC SERIES:	STYLE "8" ROD END	PG. B-5
SC SERIES:	STYLE "9" ROD END	PG. B-5
SC SERIES:	X5 ROD LOCK OPTION AND DIMENSIONS	PG. B-12
CLEVIS BRACKET		PG. B-13
EYE BRACKET		PG. B-13
MP1 CLEVIS BRACKET		PG. B-13
MP2 CLEVIS BRACKET		PG. B-14
MP4 CLEVIS BRACKET		PG. B-14
MF1/MF2 FLANGE		PG. B-14
PIN OPTIONS		PG. B-14
ROD CLEVIS OPTIONS		PG. B-15
ROD EYE OPTIONS		PG. B-15
ALIGNMENT COUPLERS		PG. B-15
SC SERIES:	SENSOR SWITCHES	PG. B-16



MP1 MOUNT
PG. B-6



MP2 MOUNT
PG. B-6



MP4 MOUNT
PG. B-6



MP3 MOUNT
PG. B-7



MS1 MOUNT
PG. B-8



MS2 MOUNT
PG. B-8



MT2 MOUNT
PG. B-10



MT4 MOUNT
PG. B-10



MT1 MOUNT
PG. B-10



MS4 MOUNT
PG. B-9



MF6 MOUNT
PG. B-11



MF2 MOUNT
PG. B-9



MF5 MOUNT
PG. B-11



MF1 MOUNT
PG. B-9



MX1,2,3 MOUNT
PG. B-7



ME3 MOUNT
PG. B-7



ME4 MOUNT
PG. B-7



X5 OPTION ROD LOCK
PG B-12

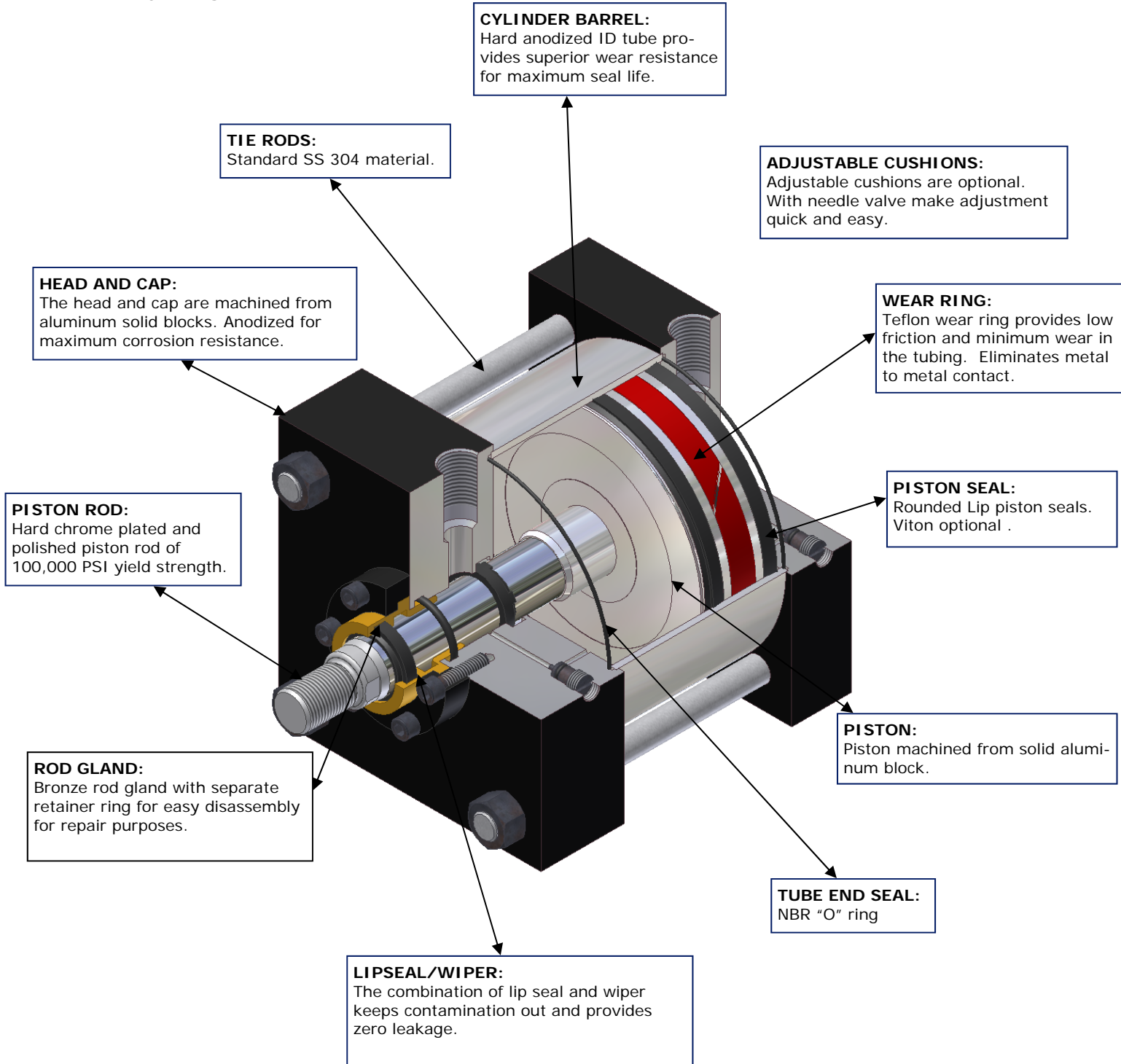




SC SERIES CYLINDER

ALUMINUM PNEUMATIC LARGE BORE : 5" BORE UPTO 8" BORE

NFPA INTERCHANGEABLE





HOW TO ORDER: SC SERIES

LARGE BORE PNEUMATIC CYLINDERS 150PSI

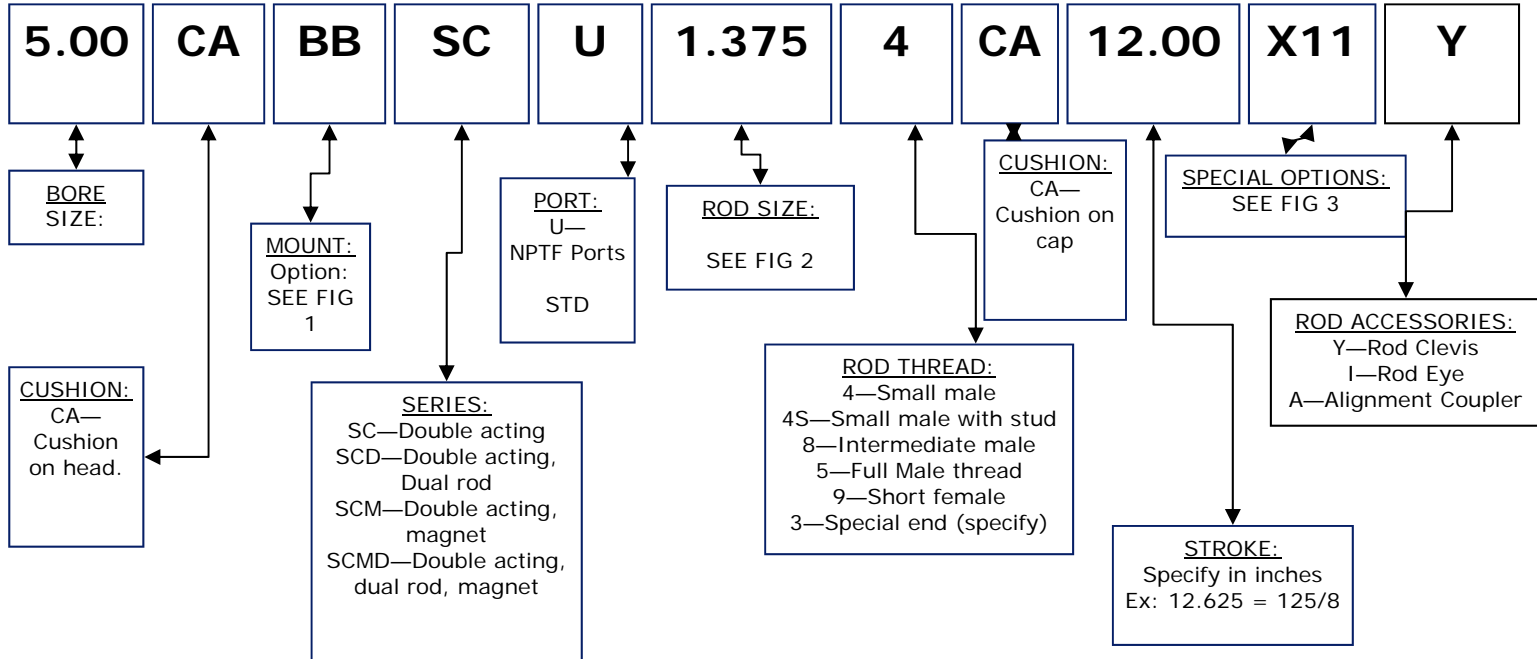


FIG 1
MOUNTING OPTIONS:

Mount	Code
MX1	TD
MX2	TC
MX3	TB
MS1	CB
MS2	C
MS4	F
MP1	BB
MP2	BC
MP4	BD
MT1	D
MT2	DB
MT4	DD
MF1	J
MF2	H
MF5	JB
ME3	JB (8" bore)
MF6	HB
ME4	HB(8" bore)

FIG 2
ROD SIZES:

Bore	Available rod option
5.00	1.00 (STD)
	1.375 (O/S)
	1.75 (O/S)
	2.00 (O/S)
	2.50 (O/S)
6.00	3.00 (O/S)
	1.375 (STD)
	1.75 (O/S)
	2.00 (O/S)
8.00	2.50 (O/S)
	3.00 (O/S)
	3.50 (O/S)
	1.375 (STD)
	1.75 (O/S)
	2.00 (O/S)
	2.50 (O/S)
3.00 (O/S)	
3.50 (O/S)	
4.00 (O/S)	
4.50 (O/S)	
5.00 (O/S)	

FIG 3 →





FIG 3

SPECIAL CYLINDER OPTIONS: X OPTIONS

The following list is the complete set of cylinder options and extras. All options do not apply to all cylinders. Each option that applies to the series of cylinder will be designated with ** to show that it applies to that series. All other options without this designation do not apply to that cylinder and cannot be ordered with that series.

CYLINDER SERIES: SC

ROD EXTENSIONS and STOP TUBE:

X43—Extension on rod thread (ex: X43-2.00) Specifies 2" thread extension**
X44—Extension on rod plain (ex: X44-2.00) Specifies 2" rod plain extension**

X14—Stop Tube (ex: X14-6.00) Specifies 6" stop tube. When specifying stop tube** length, add length of stop tube to NET stroke of cylinder. (ex: 5" net stroke + 2" stop Tube = 7" complete stroke on cylinder)

Ex cylinder model number: 1.50TSH1.00-4-7.00-X14-2.00. Net stroke is 5" and stop Tube is 2".

SEAL/CUSHION OPTIONS:

X1—Cast Iron rings (Piston)
X2—Viton seals (for high temperature)**
X4—Low temperature seals (-65F)**
X30—Metallic Rod wiper**
X10—No Cushions
X38—No Cushion on Cap only
X39—No Cushion on Head only

ACCESSORY OPTIONS:

X5—Cylinder rod lock**
X8—Nylon Rod Boot**
X9—Neoprene Rod Boot**
X23—Lifting Eye attached to cylinder Cap**
X47—"H" style guide unit**

ROD OPTIONS:

X3—Stainless Steel Piston Rod**
X8—Nylon Rod Boot**
X9—Neoprene Rod Boot**
X11—Nitrated Piston Rod**
X31—17-4PH Piston Rod**

CYLINDER FUNCTION OPTIONS:

X25—Spring Return**
X26—Spring Extend**
X40—High load Piston

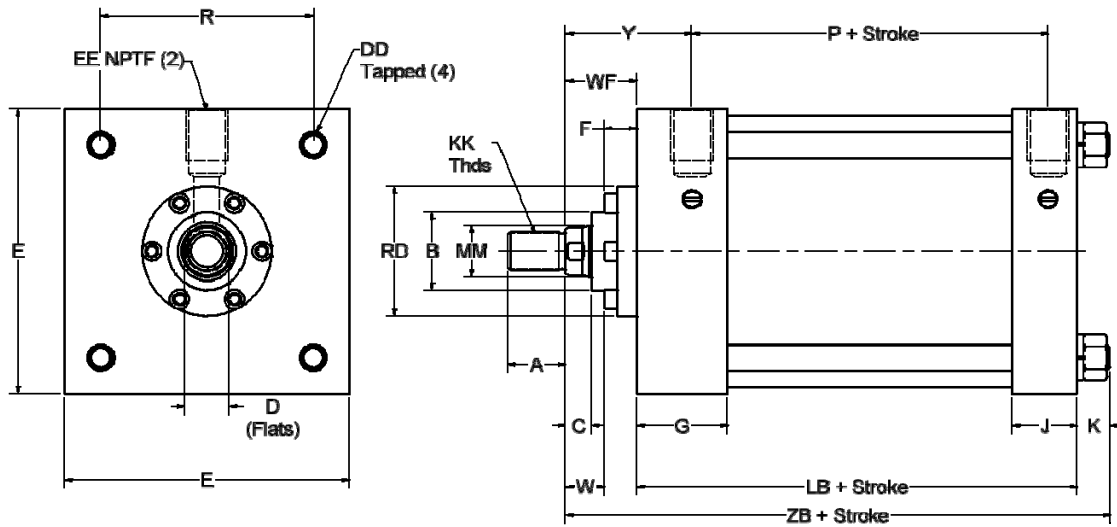
PORT/CUSHION OPTIONS:

X21—Bleeder port on Cap. Choose position. Ex: X21-P2 = Bleeder port on Pos 2**
X22—Bleeder port on Head. Choose position. Ex: X22-P3 = Bleeder port on Pos 3.**
X28—Undersize port on Cap. Specify port size. Ex: X28-SAE6**
X29—Undersize port on Head. Specify port size. Ex: X29-SAE6**
X33—Oversize port on Cap. Specify port size. Ex: X33-1"NPT**
X34—Oversize port on Head. Specify port size. Ex: X34-1"NPT**
X35—Cushion location change on Cap. Choose position. Ex: X35-P2 = Cushion on Pos 2.**
X36—Cushion location change on Head. Choose position. Ex: X36-P1 = Cushion on Pos 1.**
X41—Port location change on Cap. Choose position. Ex: X41-P3 = Port on Pos 3.**
X42—Port location change on Head. Choose position. Ex: X42-P4 = Port on Pos 4.**

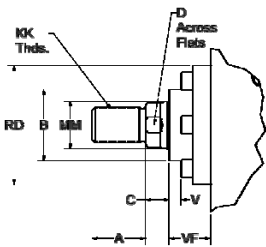




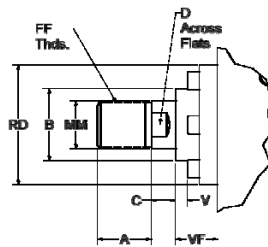
MOUNT: MXO



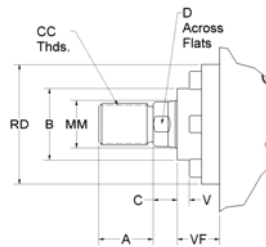
BORE	MM	E	EE	F	G	J	K	LB	P	R	RD	WF	Y	ZB
5.00	1	5 1/2	1/2	5/8	1 3/4	1 1/4	1/2	4 1/2	2.875	4.10	2 1/2	1.375	2.438	6.375
	1 3/8	5 1/2	1/2	5/8	1 3/4	1 1/4	1/2	4 1/2	2.875	4.10	3	1.625	2.688	6.625
6.00	1 3/8	6 1/2	3/4	5/8	2	1 1/2	1/2	5	3.125	4.88	3	1.625	2.813	7.125
	1 3/4	6 1/2	3/4	3/4	2	1 1/2	1/2	5	3.125	4.88	3 1/2	1.875	3.063	7.375
8.00	1 3/8	8 1/2	3/4	5/8	2	1 1/2	5/8	5 1/8	3.250	6.44	3	1.625	2.813	7.375
	1 3/4	8 1/2	3/4	3/4	2	1 1/2	5/8	5 1/8	3.250	6.44	3 1/2	1.875	3.063	7.625



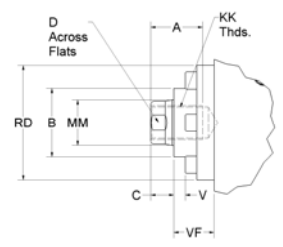
STYLE "4" SMALL MALE



STYLE "5" FULL MALE



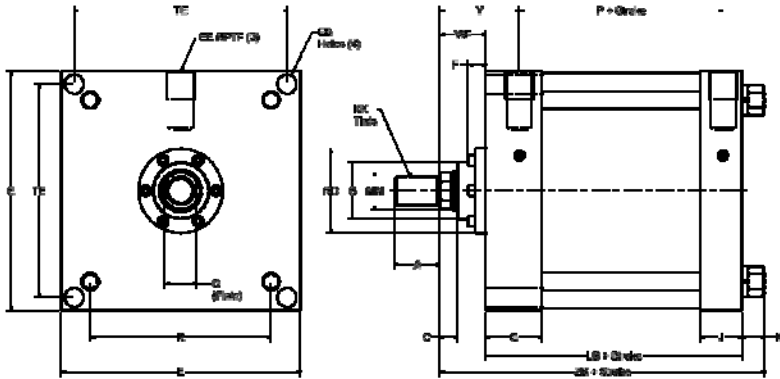
STYLE "8" INTERMEDIATE MALE



STYLE "9" FEMALE

BORE	MM	KK	CC	FF	A	B	C	D
5.00	1	3/4-16	7/8-14	1-14	1.125	1.500	0.500	0.813
	1 3/8	1-14	1 1/4-12	1 3/8-12	1.625	2.000	0.625	1.125
6.00	1 3/8	1-14	1 1/4-12	1 3/8-12	1.625	2.000	0.625	1.125
	1 3/4	1 1/4-12	1 1/2-12	1 3/4-12	2.000	2.375	0.750	1.500
8.00	1 3/8	1-14	1 1/4-12	1 3/8-12	1.625	2.000	0.625	1.125
	1 3/4	1 1/4-12	1 1/2-12	1 3/4-12	2.000	2.375	0.750	1.500

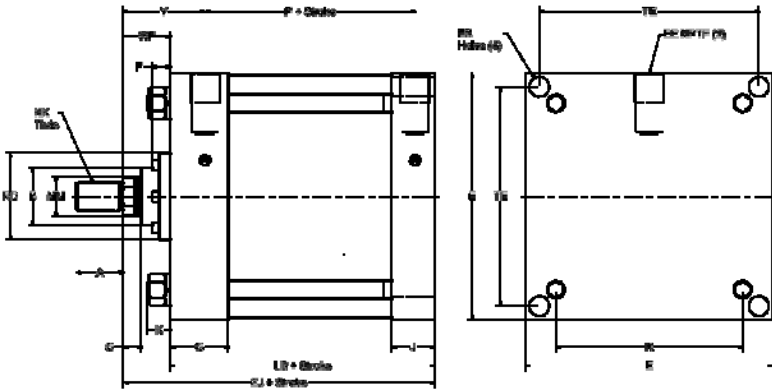




8" BORE ONLY

ME3

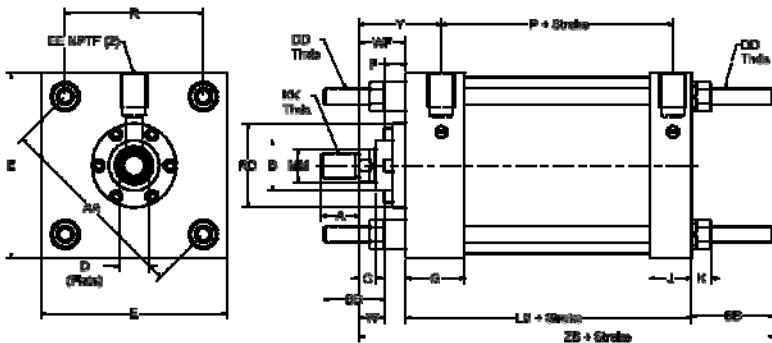
BORE	MM	FB	R	TF	UF
5.00	1	1/2	4.100	6.625	7.625
	1 3/8	1/2	4.100	6.625	7.625
6.00	1 3/8	1/2	4.880	7.625	8.625
	1 3/4	1/2	4.880	7.625	8.625
8.00	1 3/8	5/8	NA	7.578	NA
	1 3/4	5/8	NA	7.578	NA



8" BORE ONLY

ME4

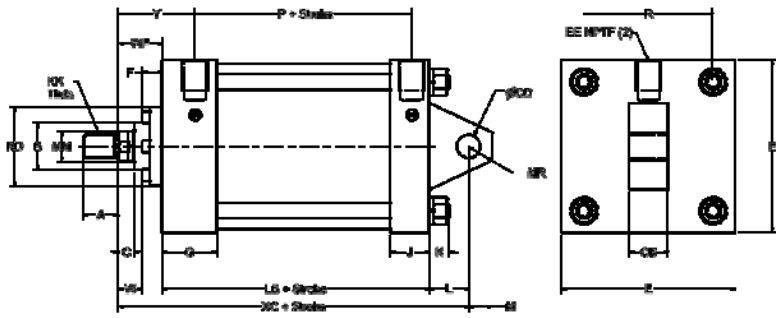
BORE	MM	FB	R	TF	UF
5.00	1	1/2	4.100	6.625	7.625
	1 3/8	1/2	4.100	6.625	7.625
6.00	1 3/8	1/2	4.880	7.625	8.625
	1 3/4	1/2	4.880	7.625	8.625
8.00	1 3/8	5/8	NA	7.578	NA
	1 3/4	5/8	NA	7.578	NA



MX1,2,3

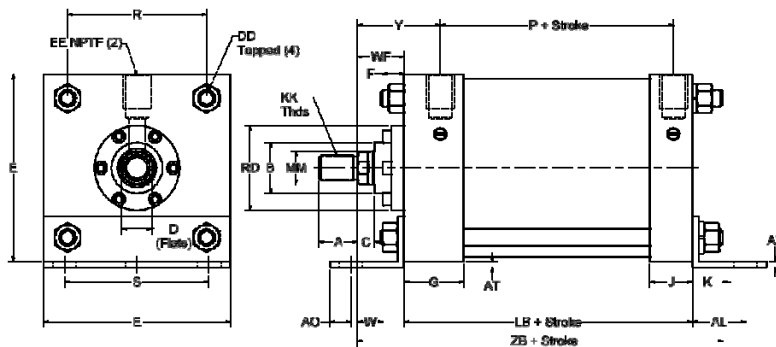
BORE	MM	BB	DD	R
5.00	1	1.813	1/2-20	4.100
	1 3/8	1.813	1/2-20	4.100
6.00	1 3/8	1.813	1/2-20	4.880
	1 3/4	1.813	1/2-20	4.880
8.00	1 3/8	2.313	5/8-18	6.440
	1 3/4	2.313	5/8-18	6.440





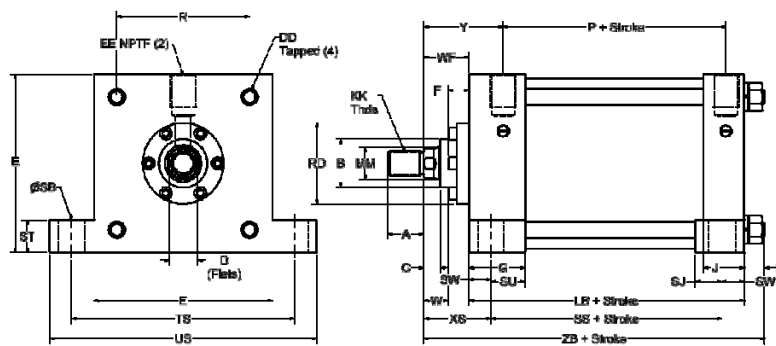
MP3

BORE	MM	CB	CD	CW	FL	L	M	XC	XD
5.00	1	1 1/4	3/4	5/8	1.875	1 1/4	3/4	7.125	7.750
	1 3/8	1 1/4	3/4	5/8	1.875	1 1/4	3/4	7.375	8.000
6.00	1 3/8	1 1/2	1	3/4	2 1/4	1 1/2	1	8.125	8.875
	1 3/4	1 1/2	1	3/4	2 1/4	1 1/2	1	8.375	9.125
8.00	1 3/8	1 1/2	1	3/4	2 1/4	1 1/2	1	8.250	9.000
	1 3/4	1 1/2	1	3/4	2 1/4	1 1/2	1	8.500	9.250



MS1

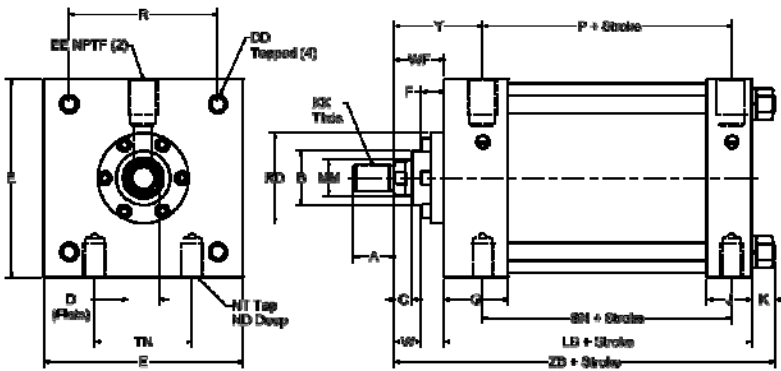
BORE	MM	AB	AL	AO	AT	S
5.00	1	5/8	1 3/8	5/8	0.188	4 1/4
	1 3/8	5/8	1 3/8	5/8	0.188	4 1/4
6.00	1 3/8	3/4	1 3/8	5/8	0.188	5 1/4
	1 3/4	3/4	1 3/8	5/8	0.188	5 1/4
8.00	1 3/8	3/4	1.813	0.688	0.250	7 1/8
	1 3/4	3/4	1.813	0.688	0.250	7 1/8



MS2

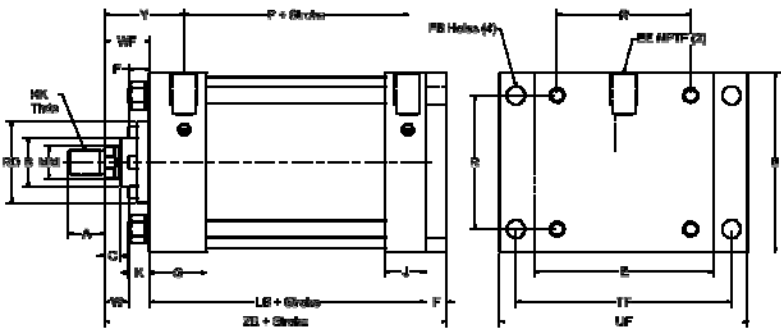
BORE	MM	SB	SJ	SS	ST	SU	SW	TS	US
5.00	1	3/4	0.563	3 1/8	1	1.063	0.688	6.875	8 1/4
	1 3/8	3/4	0.563	3 1/8	1	1.313	0.688	6.875	8 1/4
6.00	1 3/8	3/4	0.813	3 5/8	1	1.313	0.688	7.875	9 1/4
	1 3/4	3/4	0.813	3 5/8	1	1.313	0.688	7.875	9 1/4
8.00	1 3/8	3/4	0.813	3 3/4	1	1.313	0.688	9.875	11 1/4
	1 3/4	3/4	0.813	3 3/4	1	1.313	0.688	9.875	11 1/4





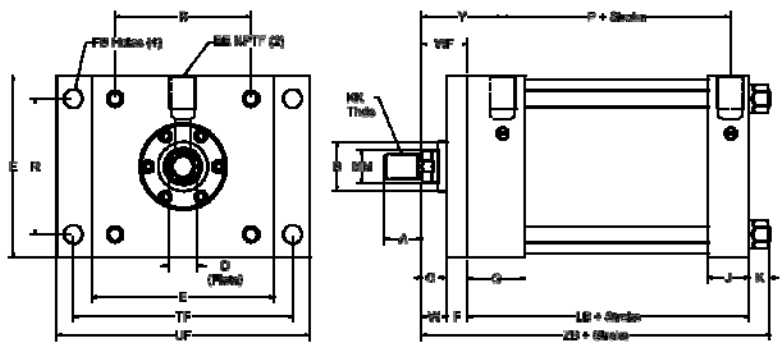
MS4

BORE	MM	NT	ND/TK	TN	SN
5.00	1	5/8-11	1	2.688	2.875
	1 3/8	5/8-11	1	2.688	2.875
6.00	1 3/8	3/4-10	1 1/8	3.250	3.125
	1 3/4	3/4-10	1 1/8	3.250	3.125
8.00	1 3/8	3/4-10	1 1/8	4.500	3.250
	1 3/4	3/4-10	1 1/8	4.500	3.250



MF2

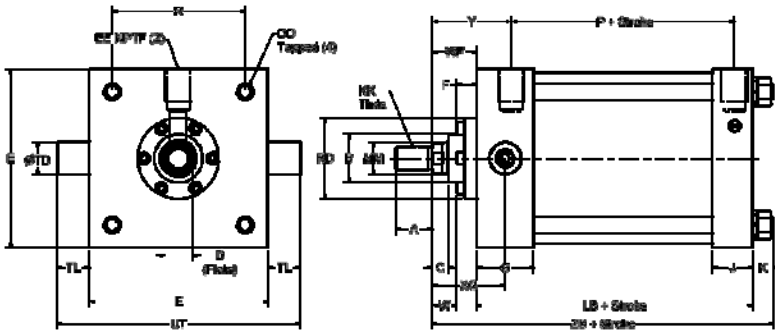
BORE	MM	FB	R	TF	UF
5.00	1	1/2	4.100	6.625	7.625
	1 3/8	1/2	4.100	6.625	7.625
6.00	1 3/8	1/2	4.880	7.625	8.625
	1 3/4	1/2	4.880	7.625	8.625
8.00	1 3/8	5/8	NA	7.578	NA
	1 3/4	5/8	NA	7.578	NA



MF1

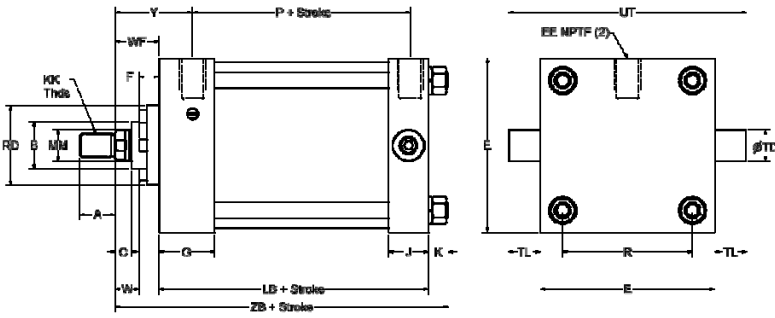
BORE	MM	FB	R	TF	UF
5.00	1	1/2	4.100	6.625	7.625
	1 3/8	1/2	4.100	6.625	7.625
6.00	1 3/8	1/2	4.880	7.625	8.625
	1 3/4	1/2	4.880	7.625	8.625
8.00	1 3/8	5/8	NA	7.578	NA
	1 3/4	5/8	NA	7.578	NA





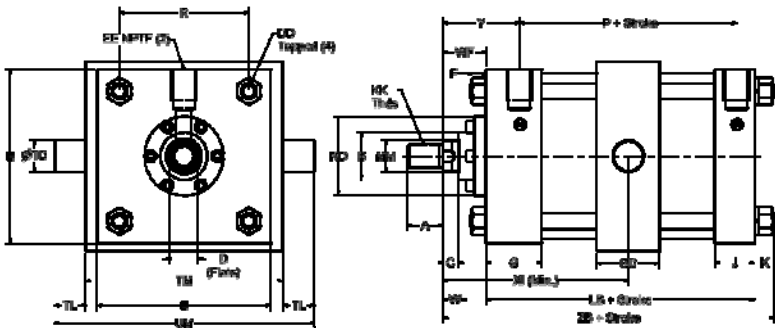
MT1

BORE	MM	TD	TL	TM	UT	XG	X1 (MIN)	BD
5.00	1	1	1	6 1/4	7 1/2	2.250	4.125	6
	1 3/8	1	1	6 1/4	7 1/2	2.500	4.375	6
6.00	1 3/8	1 3/8	1 3/8	7 5/8	9 1/4	2.625	4.875	7
	1 3/4	1 3/8	1 3/8	7 5/8	9 1/4	2.875	5.125	7
8.00	1 3/8	1 3/8	1 3/8	9 3/4	11 1/4	2.625	4.875	9 1/2
	1 3/4	1 3/8	1 3/8	9 3/4	11 1/4	2.875	5.125	9 1/2



MT2

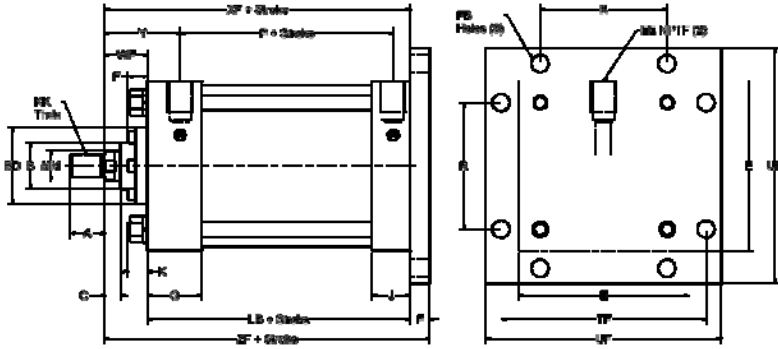
BORE	MM	TD	TL	TM	UT	XG	X1 (MIN)	BD
5.00	1	1	1	6 1/4	7 1/2	2.250	4.125	6
	1 3/8	1	1	6 1/4	7 1/2	2.500	4.375	6
6.00	1 3/8	1 3/8	1 3/8	7 5/8	9 1/4	2.625	4.875	7
	1 3/4	1 3/8	1 3/8	7 5/8	9 1/4	2.875	5.125	7
8.00	1 3/8	1 3/8	1 3/8	9 3/4	11 1/4	2.625	4.875	9 1/2
	1 3/4	1 3/8	1 3/8	9 3/4	11 1/4	2.875	5.125	9 1/2



MT4

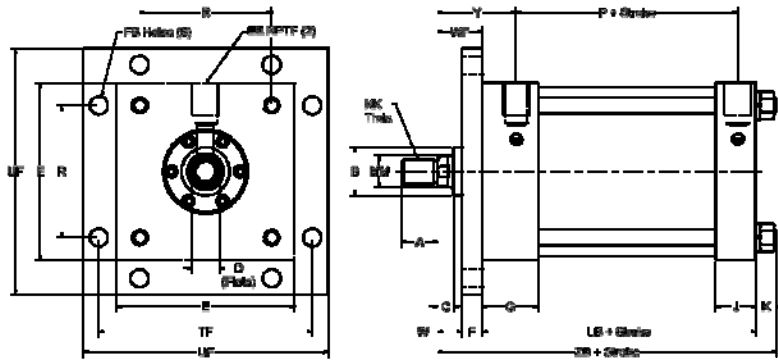
BORE	MM	TD	TL	TM	UT	XG	X1 (MIN)	BD
5.00	1	1	1	6 1/4	7 1/2	2.250	4.125	6
	1 3/8	1	1	6 1/4	7 1/2	2.500	4.375	6
6.00	1 3/8	1 3/8	1 3/8	7 5/8	9 1/4	2.625	4.875	7
	1 3/4	1 3/8	1 3/8	7 5/8	9 1/4	2.875	5.125	7
8.00	1 3/8	1 3/8	1 3/8	9 3/4	11 1/4	2.625	4.875	9 1/2
	1 3/4	1 3/8	1 3/8	9 3/4	11 1/4	2.875	5.125	9 1/2





MF6

BORE	MM	FB	R	TF	UF
5.00	1	1/2	4.100	6.625	7.625
	1 3/8	1/2	4.100	6.625	7.625
6.00	1 3/8	1/2	4.880	7.625	8.625
	1 3/4	1/2	4.880	7.625	8.625
8.00	1 3/8	5/8	NA	7.578	NA
	1 3/4	5/8	NA	7.578	NA



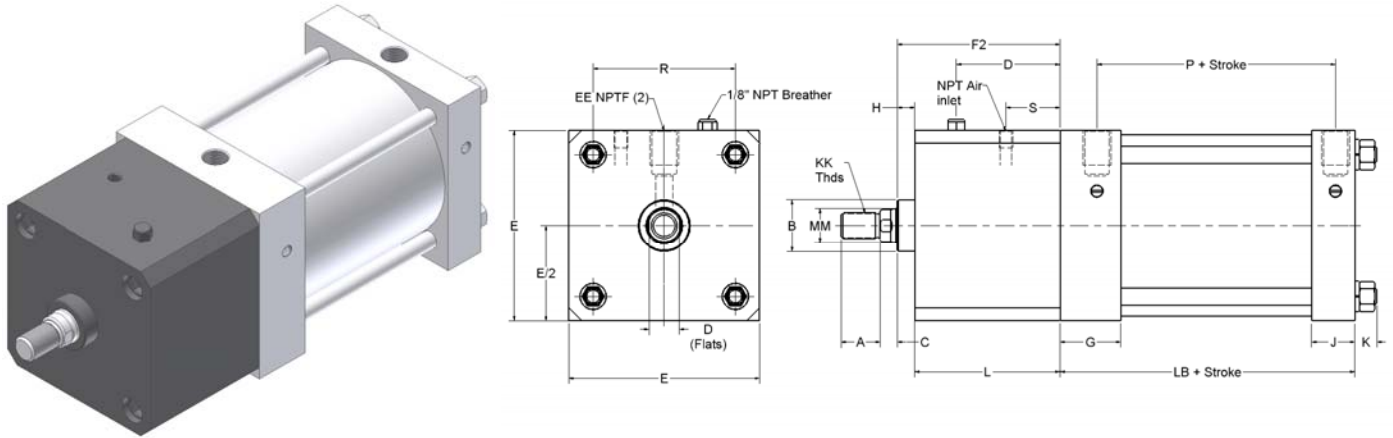
MF5

BORE	MM	FB	R	TF	UF
5.00	1	1/2	4.100	6.625	7.625
	1 3/8	1/2	4.100	6.625	7.625
6.00	1 3/8	1/2	4.880	7.625	8.625
	1 3/4	1/2	4.880	7.625	8.625
8.00	1 3/8	5/8	NA	7.578	NA
	1 3/4	5/8	NA	7.578	NA



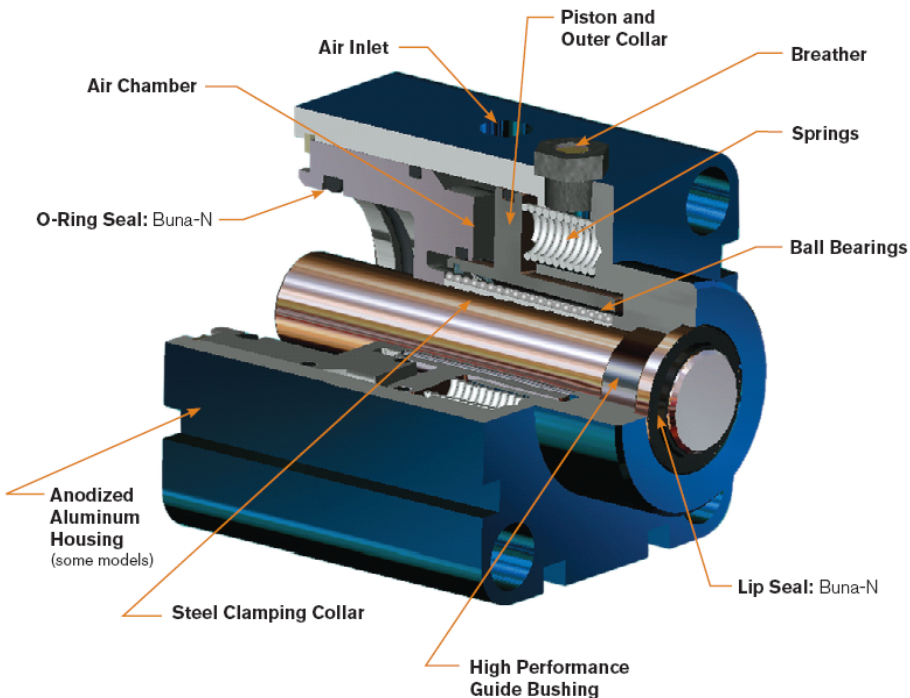


X5 OPTION: NFPA ROD LOCK. 5" AND 6" BORE



BORE	MM	L	D	F2	H	B	S
5.00	1	4.443	3.34	4.94	0.50	1.500	1.35
	1 3/8	4.743	3.54	5.37	0.625	2.000	1.30
6.00	1 3/8	5.306	4.43	5.93	0.625	2.000	1.89

ROD LOCK CUTAWAY (W/O MANUAL RELEASE)



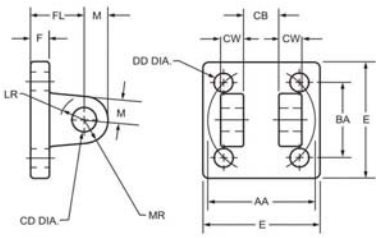
FEATURES AND BENEFITS:

- FAST RESPONSE TIMES
- PROFILE MATCHES CYLINDER
- No rod displacement on engagement
- Large clamping force
- IP67 rated (exceeds NEMA 4X)
- Extremely low backlash
- Spring engaged units
- Rated for 2,750,000 cycles
- 60PSI release pressure
- HIGH CYCLE RATES
- COMPACT UNIT, EASY INTEGRATION
- Maintains accurate position
- Consistent clamping force
- Suitable for wash down areas
- Precision holding
- Holds load during power/pressure loss
- Long maintenance free life
- Broad applications



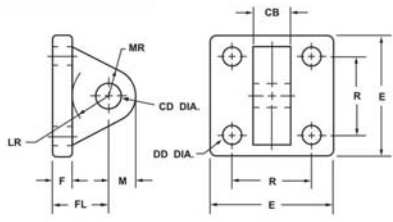


SC MOUNTING ACCESSORIES



CLEVIS BRACKETS

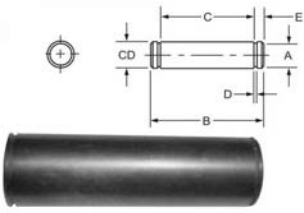
PT#	AA	BA	CB	CD	CW	DD	E	F	FL	LR	M	MR
DCB-05	2.3	1 5/8	0.765	1/2	1/2	3/8-24	2 1/2	3/8	1 1/8	1/2	1/2	9/16
DCB-06	2.9	2 1/16	1.265	3/4	5/8	1/2-20	3	5/8	1 7/8	1	3/4	1 1/16
DCB-07	3.6	2 9/16	1.265	3/4	5/8	1/2-20	3 1/2	5/8	1 7/8	1 1/16	3/4	1 1/16
DCB-10	4.6	3 1/4	1.515	1	3/4	5/8-18	4 1/2	3/4	2 1/4	1 1/4	1	1 1/8
DCB-13	5.4	3 13/16	2.032	1 3/8	1	5/8-18	5	7/8	3	1 7/8	1 3/8	1 3/4
DCB-17	7.0	4 15/16	2.531	1 3/4	1 1/4	7/8-14	6 1/2	7/8	3 1/8	2	1 3/4	1 7/8
DCB-20	8.1	5 3/4	2.531	2	1 1/4	1-14	7 1/2	1	3 1/2	2 1/8	2	2 1/8
DCB-25	9.3	6 19/32	3.032	2 1/2	1 1/2	1 1/8-12	8 1/2	1	4	2 5/8	2 1/2	2 1/2
DCB-30	10.6	7 1/2	3.032	3	1 1/2	1 1/4-12	9 1/2	1	4 1/4	2 7/8	2 3/4	2 3/4
DCB-35	13.6	9 5/8	4.032	3 1/2	2	1 3/4-12	12 5/8	1 11/16	5 11/16	3 5/8	3 1/2	3 1/2
DCB-40	16.2	11 1/2	4.032	4	2 1/4	2-12	14 7/8	1 15/16	6 7/16	4	4	4



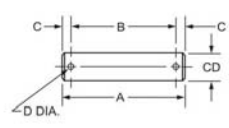
EYE BRACKET

PT#	CB	CD	DD	E	F	FL	LR	M	MR	R
DEB-05	3/4	1/2	13/32	2 1/2	3/8	1 1/8	3/4	1/2	9/16	1.63
DEB-07	1 1/4	3/4	17/32	3 1/2	5/8	1 7/8	1 1/4	3/4	7/8	2.56
DEB-10	1 1/2	1	21/32	4 1/2	3/4	2 1/4	1 1/2	1	1 1/4	3.25
DEB-10H	1 1/2	1	21/32	5	7/8	2 3/8	1 1/2	1	1 1/4	3.25
DEB-13	2	1 3/8	21/32	5	7/8	3	2 1/8	1 3/8	1 5/8	3.81
DEB-17	2 1/2	1 3/4	29/32	6 1/2	7/8	3 1/8	2 1/4	1 3/4	2 1/8	4.95
DEB-17H	2 1/2	1 3/4	29/32	6 1/2	1 1/8	3 3/8	2 1/4	1 3/4	2 1/8	4.95
DEB-20	2 1/2	2	1 1/16	7 1/2	1	3 1/2	2 1/2	2	2 7/16	5.75
DEB-20H	2 1/2	2	1 1/16	7 1/2	1 1/2	4	2 1/2	2	2 7/16	5.75
DEB-25	3	2 1/2	1 3/16	8 1/2	1	4	3	2 1/2	3	6.59
DEB-25H	3	2 1/2	1 3/16	8 1/2	1 3/4	4 3/4	3	2 1/2	3	6.59
DEB-30	3	3	1 5/16	9 1/2	1	4 1/4	3 1/4	3	3 1/4	7.50
DEB-30H	3	3	1 5/16	9 1/2	2	5 1/4	3 1/4	3	3 1/4	7.50
DEB-35	4	3 1/2	1 13/16	12 5/8	1 11/16	5 11/16	4	3 1/2	4 1/8	9.62
DEB-40	4 1/2	4	2 1/16	14 7/8	1 15/16	6 7/16	4 1/2	4	5 1/4	11.50

PINS WITH GROOVES



PINS WITH HOLES



PINS WITH GROOVES

PT#	CD	A	B	C	D	E
DP-05G	.50	.468	2.094	1.875	.041	.109
DP-07G	.75	.704	2.875	2.625	.048	.125
DP-10G	1.00	.940	3.375	3.125	.048	.125
DP-13G	1.375	1.291	4.485	4.187	.056	.149
DP-17G	1.75	1.650	5.547	5.188	.068	.180
DP-20G	2.00	1.886	5.547	5.188	.068	.180
DP-25G	2.50	2.360	6.625	6.188	.086	.219
DP-30G	3.00	2.838	6.780	6.250	.103	.265
DP-35G	3.50	3.316	8.845	8.125	.120	.360
DP-40G	4.00	3.792	9.845	9.125	.120	.360

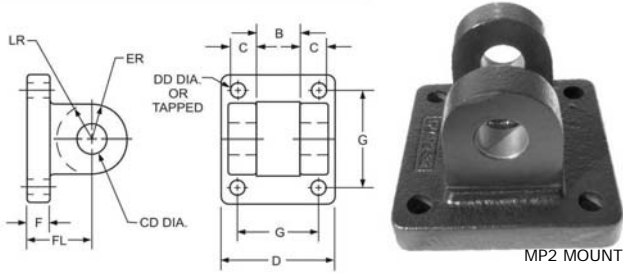
PINS WITH HOLES

PT#	CD	A	B	C	D
DP-05H	.50	2.281	1.938	.172	.106
DP-07H	.75	3.094	2.719	.188	.140
DP-10H	1.00	3.594	3.219	.188	.140
DP-13H	1.375	4.656	4.250	.203	.173
DP-17H	1.75	5.656	5.250	.203	.173
DP-20H	2.00	5.719	5.281	.219	.204
DP-25H	2.50	6.781	6.313	.234	.219
DP-30H	3.00	6.844	6.344	.250	.250
DP-35H	3.50	8.969	8.406	.282	.312
DP-40H	4.00	9.969	9.409	.282	.312

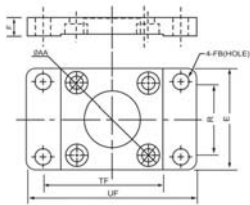




SC MOUNTING ACCESSORIES



PT#	CD	FL	F	B	C	D	ER	G	TAPPED	DD
DMP2-5	.752	1.88	.63	1.26	.62	5.50	.87	4.10	1/2-20	.53
DMP2-6	1.002	2.25	.75	1.51	.75	6.50	1.13	4.88	1/2-20	.53



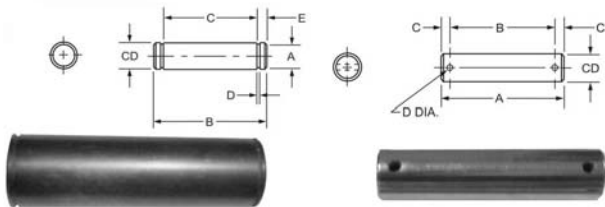
MF1/MF2 MOUNT



PT#	UF	TF	FB	E	R	F	AA	TAPPED
DF-5	7 5/8	6 5/8	9/16	5 1/2	4.10	5/8	5.79	1/2-20
DF-6	8 5/8	7 5/8	9/16	6 1/2	4.88	3/4	6.90	1/2-20

PINS WITH GROOVES

PINS WITH HOLES



PINS WITH GROOVES

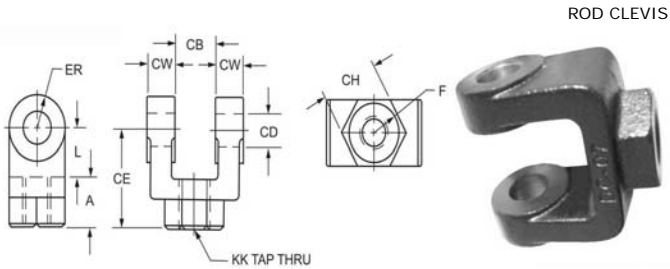
PINS WITH HOLES

PT#	CD	A	B	C	D	E	PT#	CD	A	B	C	D
DP-05G	.50	.468	2.094	1.875	.041	.109	DP-05H	.50	2.281	1.938	.172	.106
DP-07G	.75	.704	2.875	2.625	.048	.125	DP-07H	.75	3.094	2.719	.188	.140
DP-10G	1.00	.940	3.375	3.125	.048	.125	DP-10H	1.00	3.594	3.219	.188	.140
DP-13G	1.375	1.291	4.485	4.187	.056	.149	DP-13H	1.375	4.656	4.250	.203	.173
DP-17G	1.75	1.650	5.547	5.188	.068	.180	DP-17H	1.75	5.656	5.250	.203	.173
DP-20G	2.00	1.886	5.547	5.188	.068	.180	DP-20H	2.00	5.719	5.281	.219	.204
DP-25G	2.50	2.360	6.625	6.188	.086	.219	DP-25H	2.50	6.781	6.313	.234	.219
DP-30G	3.00	2.838	6.780	6.250	.103	.265	DP-30H	3.00	6.844	6.344	.250	.250
DP-35G	3.50	3.316	8.845	8.125	.120	.360	DP-35H	3.50	8.969	8.406	.282	.312
DP-40G	4.00	3.792	9.845	9.125	.120	.360	DP-40H	4.00	9.969	9.409	.282	.312





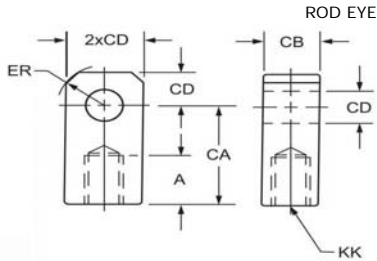
SC MOUNTING ACCESSORIES



ROD CLEVIS

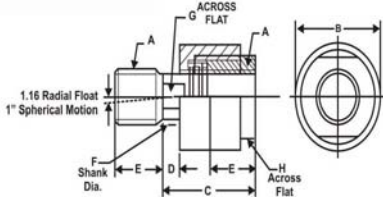


PT#	CB	CD	CE	CH	CW	F	L	A	KK	ER
DC-05	.765	1/2	1 1/2	1	1/2	1	3/4	3/4	7/16-20	1/2
DC-07	1.265	3/4	2 3/8	1 1/4	5/8	1 1/4	1 1/4	1 1/8	3/4-16	3/4
DC-07M	1.265	3/4	2 1/8	1 3/8	5/8	1 1/4	1	1 1/8	3/4-16	3/4
DC-10	1.515	1	3 1/8	1 1/2	3/4	1 1/2	1 1/2	1 5/8	1-14	1
DC-10M	1.515	1	2 15/16	1 1/2	3/4	1 5/8	1 15/16	1 5/8	1-14	1
DC-13	2.032	1 3/8	4 1/8	2	1	2	2 1/8	2	1 1/4-12	1 3/8
DC-13M	2.032	1 3/8	3 3/4	2	1	2	1 3/4	2	1 1/4-12	1 3/8
DC-17	2.531	1 3/4	4 1/2	2 3/8	1 1/4	2 3/8	2 1/4	2 1/4	1 1/2-12	1 3/4
DC-20	2.531	2	5 1/2	2 15/16	1 1/4	2 15/16	2 1/2	3	1 7/8-12	2
DC-25	3.032	2 1/2	6 1/2	3 1/2	1 1/2	3 1/2	3	3 1/2	2 1/4-12	2 1/2
DC-30	3.032	3	6 3/4	3 7/8	1 1/2	3 7/8	3 1/4	3 1/2	2 1/2-12	2 3/4
DC-30M	3.032	3	6 3/4	3 7/8	1 1/2	3 7/8	3 1/4	3 1/2	2 1/2-12	3
DC-35	4.032	3 1/2	8 1/2	5	2	5	4	4 1/2	3 1/4-12	3 1/2
DC-35M	4.032	3 1/2	7 3/4	5	2	5	4 1/4	3 1/2	3 1/4-12	3 1/2
DC-40	4.032	4	10	6 1/8	2 1/4	6 1/8	4 1/2	5 1/2	4-12	4



ROD EYE

PT#	A	CA	CB	CD	ER	KK
DE-05	3/4	1 1/2	3/4	1/2	5/8	7/16-20
DE-07	1 1/8	2 1/16	1 1/4	3/4	7/8	3/4-16
DE-10	1 5/8	2 13/16	1 1/2	1	1 3/16	1-14
DE-10M	1 1/8	2 3/8	1 1/2	1	1 7/16	7/8-14
DE-13	2	3 7/16	2 1/2	1 3/8	1 9/16	1 1/4-12
DE-17	2 1/4	4	2 1/2	1 3/4	2	1 1/2-12
DE-20	3	5	2 1/2	2	2 1/2	1 7/8-12
DE-20M	2 1/4	4 3/8	2 1/2	2	2 7/8	1 3/4-12
DE-25	3 1/2	5 13/16	3	2 1/2	2 13/16	2 1/4-12
DE-30	3 1/2	6 1/8	3	3	3 1/4	2 1/2-12
DE-30M	3 5/8	6 1/2	3 1/2	3	3 1/4	2 3/4-12
DE-35	4 1/2	7 5/8	4	3 1/2	3 7/8	3 1/4-12
DE-35M	5	7 5/8	4	3 1/2	3 7/8	3 1/2-12
DC-40	5 1/2	9 1/8	4 1/2	4	4 7/16	4-12
DE-40M	5 3/4	9 1/8	5	4	4 7/16	4 1/2-12



ALIGNMENT COUPLER



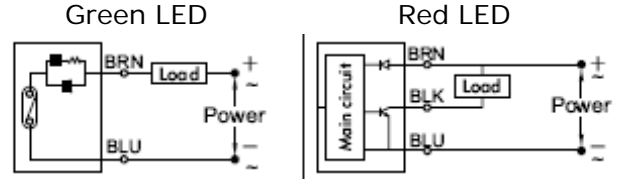
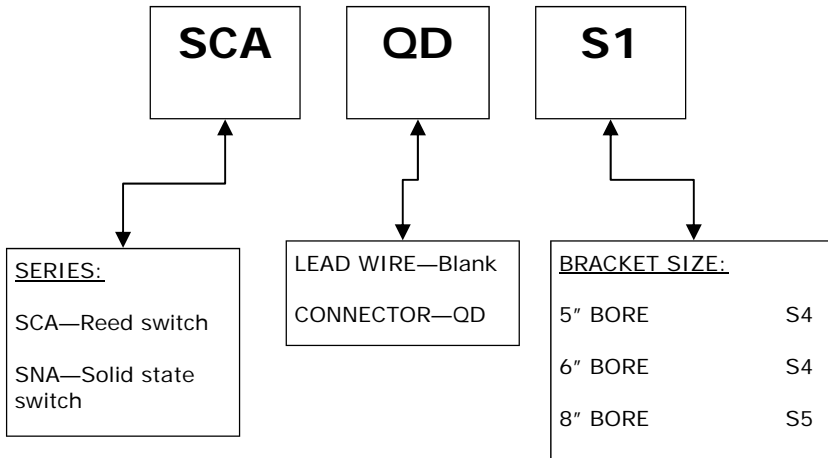
PT#	A	B	C	D	E	F	O	H
DAC-250F	1/4-28	7/8	1 1/4	1/4	5/8	.245	3/16	13/16
DAC-312F	5/16-24	7/8	1 1/4	1/4	5/8	.308	1/4	13/16
DAC-375F	3/8-24	7/8	1 1/4	1/4	5/8	.370	5/16	13/16
DAC-437F	7/16-20	1 1/4	2	1/2	3/4	5/8	9/16	1 1/8
DAC-500F	1/2-20	1 1/4	2	1/2	3/4	5/8	9/16	1 1/8
DAC-625F	5/8-16	1 1/4	2	1/2	3/4	5/8	1/2	1 1/8
DAC-750F	3/4-16	1 3/4	2 5/16	5/16	1 1/8	31/32	7/8	1 1/2
DAC-875F	7/8-14	1 3/4	2 5/16	5/16	1 1/8	31/32	7/8	1 1/2
DAC-1000F	1-14	2 1/2	2 15/16	1/2	1 5/8	1 3/8	1 1/4	2 1/4
DAC-1250F	1 1/4-12	2 1/2	2 15/16	1/2	1 5/8	1 3/8	1 1/4	2 1/4
DAC-1375F	1 3/8-12	2 1/2	2 15/16	1/2	1 5/8	1 3/8	1 1/4	2 1/4
DAC-1500F	1 1/2-12	3 1/4	4 3/8	1 3/16	2 1/4	1 3/4	1 1/2	3
DAC-1750F	1 3/4-12	3 1/4	4 3/8	1 3/16	2 1/4	1 3/4	1 1/2	3
DAC-1875F	1 7/8-12	3 1/4	5 7/16	1 1/16	3	2 1/4	1 7/8	3 1/2
DAC-2000F	2-12	3 1/4	5 7/16	1 1/16	3	2 1/4	1 7/8	3 1/2





SC SERIES SENSOR SWITCH AND BRACKETS

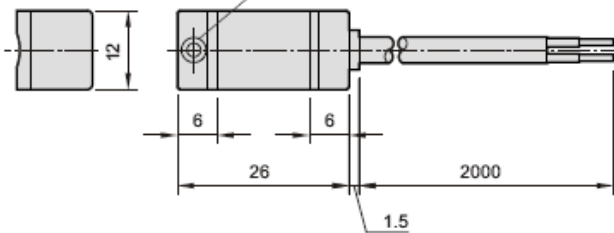
HOW TO ORDER:



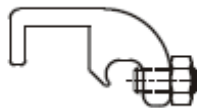
SPECIFICATIONS:

MODEL	Switch type	Contacts	Voltage range	Current range	Voltage Drop	Response time	Temperature	Lead wire length	Classification
SCA	Reed Switch	N/O	5-240V DC/ AC	100mA max	2.5V max	Max 1ms	-10—+70C	3m	IP 67 (NEMA 6)
SNA	NPN current sinking	N/O	5-30V DC	200mA max	0.5V max	Max 1ms	-10—+70C	3m	IP 67 (NEMA 6)

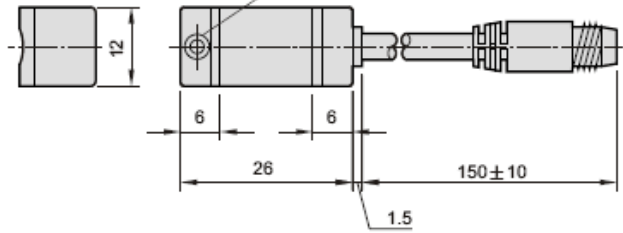
SCA and SNA dimensions



Bracket assembly



SCA-QD and SNA-QD dimensions



Wiring of the QD:

● 2 wire QD wiring

● 3 wire QD wiring

